



ORDINANCE NO. 4, SERIES 2018

SEP - 4 2018

**ANNEXING CERTAIN LANDS LOCATED
IN THE TOWN OF PRAIRIE DU SAC, SAUK COUNTY, WISCONSIN**

SAUK COUNTY CLERK
BARABOO, WISCONSIN

WHEREAS, a Petition for Direct Annexation by Unanimous Approval (the "Petition"), pursuant to the provisions of § 66.0217(2), Wis. Stats., was filed with the Village of Prairie du Sac on June 14, 2018; and

WHEREAS, the Petition complies with the requirements of § 66.0217(5), Wis. Stats., with respect to the information contained therein; and

WHEREAS, the Village Board finds that necessary governmental services can be provided to the territory sought to be annexed in a cost-effective manner, including certain services not available from the Town of Prairie du Sac; and

WHEREAS, the petitioning landowner expressed the need for improved municipal services in order to develop the subject territory; and

WHEREAS, the Wisconsin Department of Administration has reviewed the information submitted pertaining to the proposed annexation, pursuant to § 66.0217(6), Wis. Stats., and has determined that the proposed annexation is in the public interest; and

WHEREAS, the Village of Prairie du Sac Plan Commission has recommended the acceptance of the Petition; and

WHEREAS, the Village Board finds that the proposed annexation will promote the economic prosperity of the Village.

NOW, THEREFORE, the Village Board of the Village of Prairie du Sac do ordain as follows:


1. Annexation and Description of Annexed Territory. The Petition is hereby accepted, and the territory described on Exhibit A attached hereto and incorporated herein, is hereby annexed to the Village of Prairie du Sac.
2. Map. Exhibit B attached hereto and incorporated herein is a map reasonably showing the boundaries of such annexed territory and the relation of the annexed territory to the municipalities affected thereby.
3. Population. The current population of the territory hereby annexed is zero.
4. Filing. The Village Clerk shall file immediately with the Wisconsin Secretary of State, Register of Deeds for Sauk County, Wisconsin, Clerk for Sauk County, Wisconsin and each company supplying utility service to the

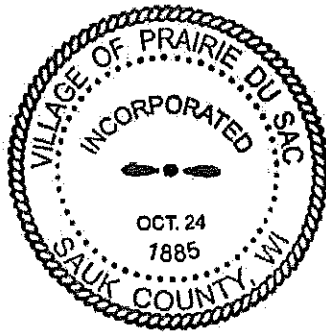
annexed territory, a copy of this Ordinance along with the map and description of the territory annexed, all as attached as Exhibits A and B.

5. Ward. The annexed territory is hereby added to Ward 4 of the Village of Prairie du Sac.
6. Supervisory District. The Village of Prairie du Sac petitions the Sauk County Board of Supervisors that the annexed territory be moved from Supervisor District 31 to Supervisor District 29.
7. Zoning. The annexed territory shall remain zoned A-T Agricultural Transition.
8. Validity. If any provision of this ordinance shall be held invalid, such invalidity shall not affect the remaining provisions thereof.

Adopted this 28th day of August, 2018.
Published this 6th day of September, 2018.

Village of Prairie du Sac, WI


Cheryl A. Sherman
Village President



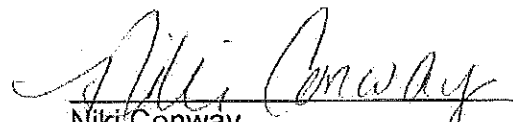

Niki Conway
Village Clerk

Exhibit A: Legal Description of Territory to be Annexed

A parcel of land located in the NE1/4 of the SE1/4 of Section 2, T9N, R6E, Town of Prairie du Sac, Sauk County, Wisconsin more particularly described as follows:

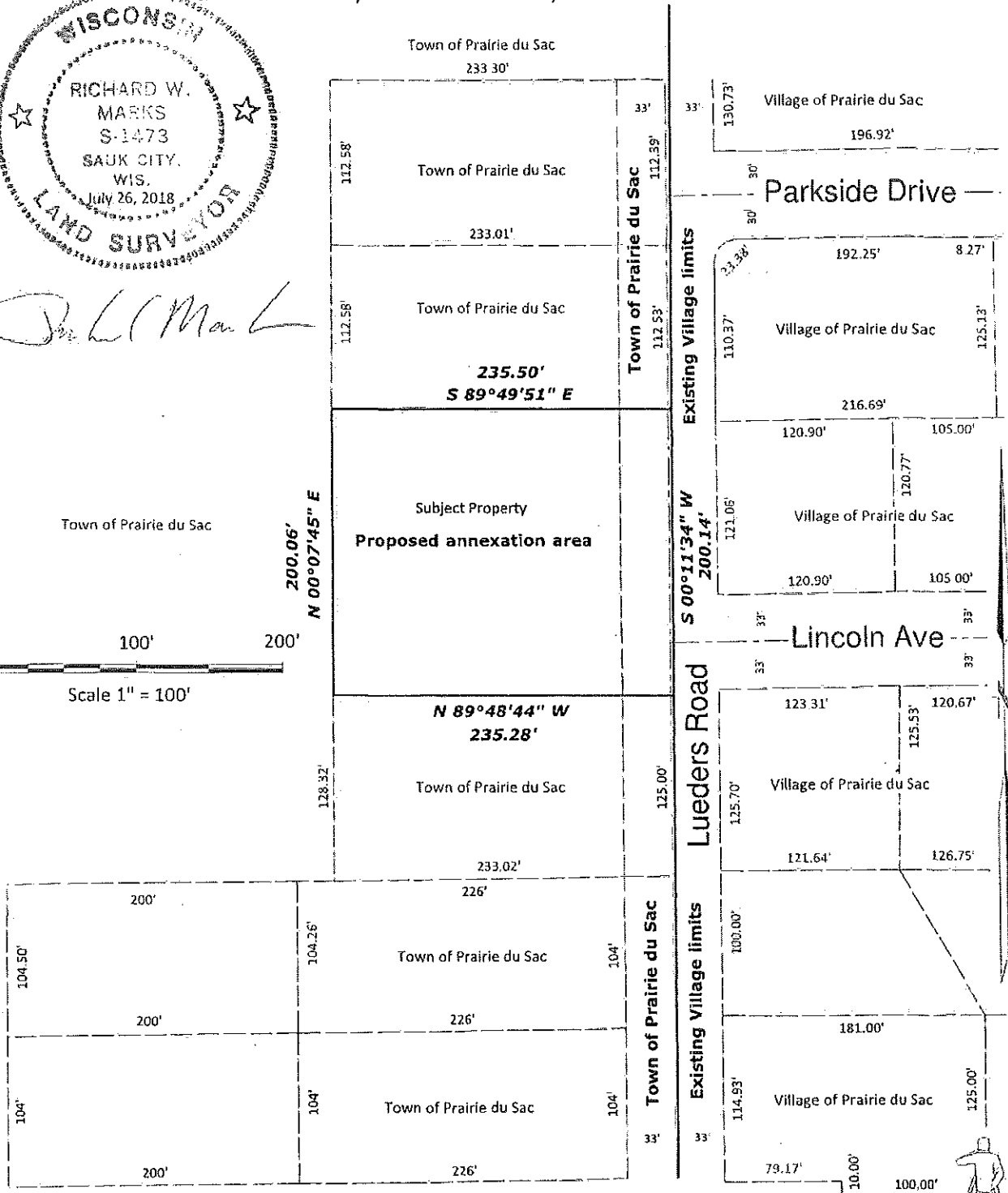
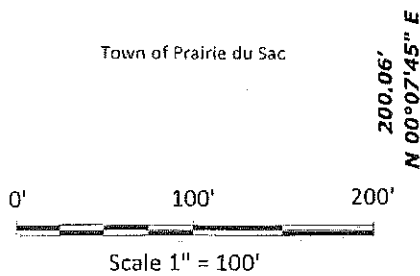
Commencing at a railroad spike at the southeast corner of said Section 2; thence N00°11'34"E along the east line of the SE1/4 of said Section 2, 1,790.72 ft. (recorded as N0°00', 1,790.88 ft.) to the point of beginning; thence N89°48'44"W, 235.28 ft. (recorded as N90°00'W, 233.00 ft.) to a 3/4" solid round iron rod; thence N00°07'45"E, 200.06 ft. (recorded as N0°00', 200.00 ft.) to a 3/4" solid round iron rod at the southwest corner of Lot 2 of Sauk County Certified Survey Map Number 2440; thence S89°49'51"E along the south line of said Lot 2, 235.50 ft. (recorded as N90°00'E, 233.00 ft.) to the southeast corner of said Lot 2 and the east line of the SE1/4 of said Section 2; thence S00°11'34"W along said east line, 200.14 ft. (recorded as S0°00', 200.00 ft.) to the point of beginning.

Annexation Map

LOCATED IN THE NE1/4 OF THE SE1/4 OF SECTION 2, T9N, R6E, TOWN OF PRAIRIE DU SAC, SAUK COUNTY, WISCONSIN.



Richard W. Marks



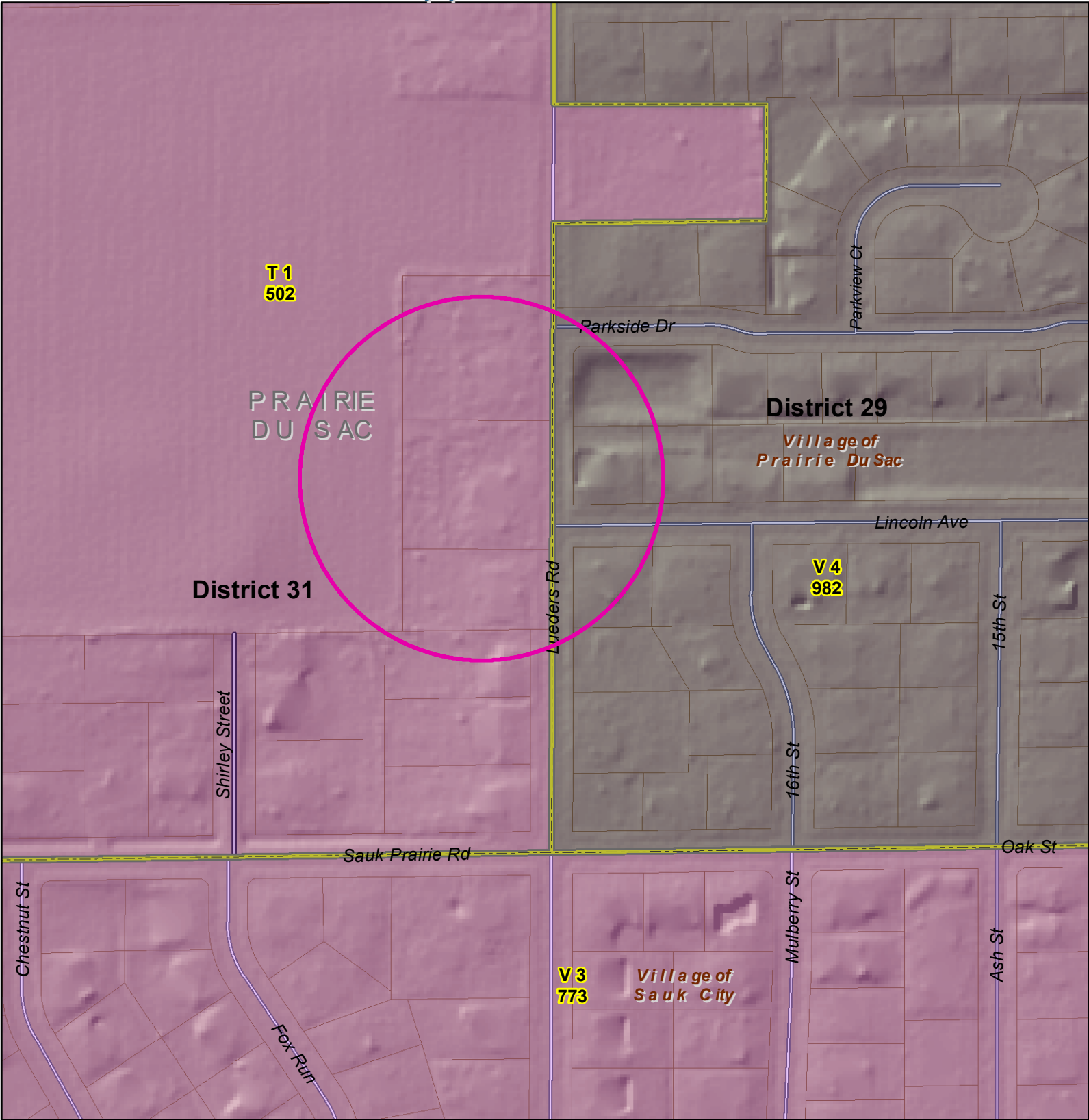
RIVER VALLEY LAND SURVEYING

RICHARD MARKS - 504 CEDAR STREET - SAUK CITY - WISCONSIN - 53583 - PHONE (608) 643-4391



Sauk County Land Information\GIS Department

Approved Plan



Legend

Supervisor Location

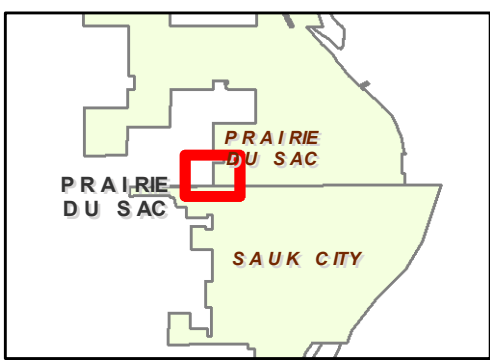
Type

- Aldersperson
- Supervisor
- Polling Places
- TaxParcel
- Municipal Boundaries
- Wards

Supervisors - 2010

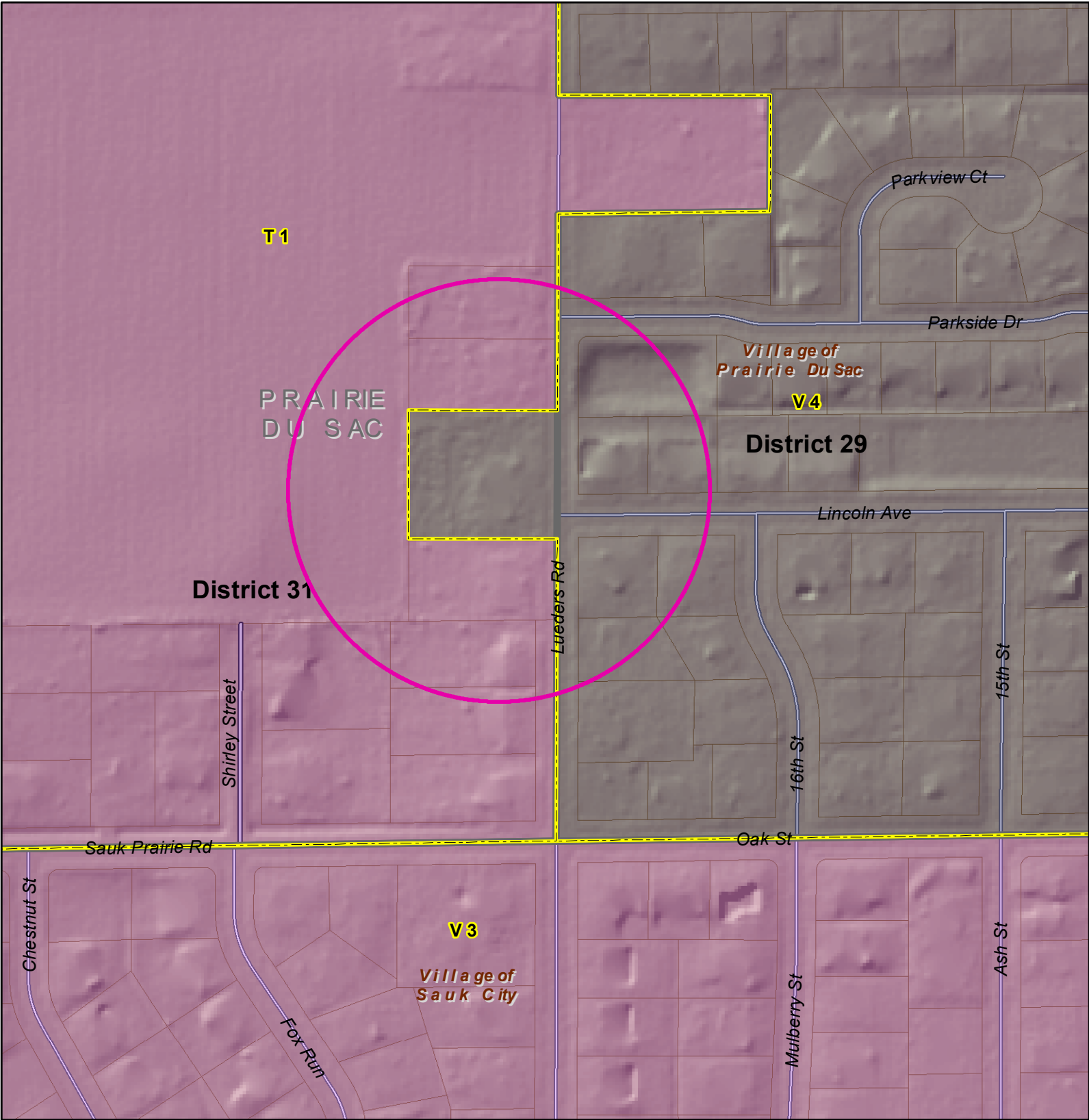
District Name

Supervisory District 1	Supervisory District 14	Supervisory District 27	Supervisory District 5
Supervisory District 10	Supervisory District 15	Supervisory District 28	Supervisory District 6
Supervisory District 11	Supervisory District 16	Supervisory District 29	Supervisory District 7
Supervisory District 12	Supervisory District 17	Supervisory District 3	Supervisory District 8
Supervisory District 13	Supervisory District 18	Supervisory District 30	Supervisory District 9
	Supervisory District 19	Supervisory District 25	Supervisory District 31
	Supervisory District 2	Supervisory District 26	Supervisory District 4
	Supervisory District 20		
	Supervisory District 21		
	Supervisory District 22		
	Supervisory District 23		
	Supervisory District 24		





Sauk County Land Information\GIS Department Proposed Plan



Legend

- Supervisor Location Type**
- Aldersperson
 - Supervisor
 - Polling Places
 - Municipal Boundaries
 - Wards_Proposed

- Supervisors_Proposed District Name**
- Supervisory District 1
 - Supervisory District 10
 - Supervisory District 11
 - Supervisory District 12
 - Supervisory District 13
 - Supervisory District 14
 - Supervisory District 15
 - Supervisory District 16
 - Supervisory District 17
 - Supervisory District 18
 - Supervisory District 19
 - Supervisory District 2
 - Supervisory District 20
 - Supervisory District 21
 - Supervisory District 22
 - Supervisory District 23
 - Supervisory District 24
 - Supervisory District 25
 - Supervisory District 26
 - Supervisory District 27
 - Supervisory District 28
 - Supervisory District 29
 - Supervisory District 3
 - Supervisory District 30
 - Supervisory District 31
 - Supervisory District 4
 - Supervisory District 5
 - Supervisory District 6
 - Supervisory District 7
 - Supervisory District 8
 - Supervisory District 9

