

ORDINANCE NO. 2018-1

AN ORDINANCE ANNEXING CERTAIN TERRITORY AND INCORPORATING THE SAME WITHIN THE CORPORATE BOUNDARIES OF THE VILLAGE OF SAUK CITY PURSUANT TO THE PROVISIONS OF WISCONSIN STATUTES, SECTION 66.0217.

BE IT ORDAINED BY THE VILLAGE BOARD OF THE VILLAGE OF SAUK CITY, SAUK COUNTY, WISCONSIN, AS FOLLOWS:

WHEREAS, Luke McNeely and Darilyn McNeely (collectively, the "Owner") are the sole owners of certain real estate described in the attached Exhibit A which is located in the Town of Prairie du Sac, Sauk County, Wisconsin; and

WHEREAS, the Owner has petitioned the Village of Sauk City for direct unanimous annexation pursuant to Wis. Stat. sec. 66.0217(2).

WHEREAS, the Village of Sauk City now agrees to annex said property and incorporate the same within the corporate boundaries of the Village of Sauk City pursuant to Wis. Stat. sec. 66.0217.

NOW THEREFORE, be it ordained by the Village Board of the Village of Sauk City, Sauk County, as follows:

1. Annexation of Territory. There is hereby annexed to the Village of Sauk City, County of Sauk, State of Wisconsin, and incorporated within the corporate boundaries thereof, the following territory adjoining the present corporate boundaries of the Village, current owned by the Owner: See Exhibit A.

2. Zoning.

The property described in Exhibit A is to be initially zoned as A-G Agricultural.

3. New Corporate Limits.

The corporate limits of the Village of Sauk city are hereby extended and increased so as to include and embrace within the corporate limits of the Village of Sauk City, the territory described in Section 1 hereof, and such territory is hereby declared to be part of the Village of Sauk City.

4. Accuracy of Map of Annexed Territory.

(a) The map attached to this ordinance as Exhibit A is an accurate map of the territory annexed, and such map is adopted as the official map of the territory annexed, and the Village Administrator of the Village of Sauk City, is hereby authorized and directed to certify that the map is an

accurate map of the territory annexed under the provision of this ordinance.

(b) The Village Administrator of the Village of Sauk City is authorized and directed to file certified copies of this Ordinance and copies of the official certificate and map with the Secretary of State, utility companies providing service to the annexed territory, the Sauk County Register of Deeds, the clerk of any affected school district, and to meet any other filing requirements under Wis. Stat. sec. 66.0217(9).

5. Population.

The Village Board has determined that the population of the annexed territory is zero (0).

6. Effective Date.

This ordinance shall take effect as soon as permitted by law.

Passed by the Village Board of the Village of Sauk City, on the 29th day of May, 2018.

APPROVED:


JAMES ANDERSON, Village President

ATTESTED:


VICKI BREUNIG, Village Administrator

Published: 6-7-18

Exhibit A

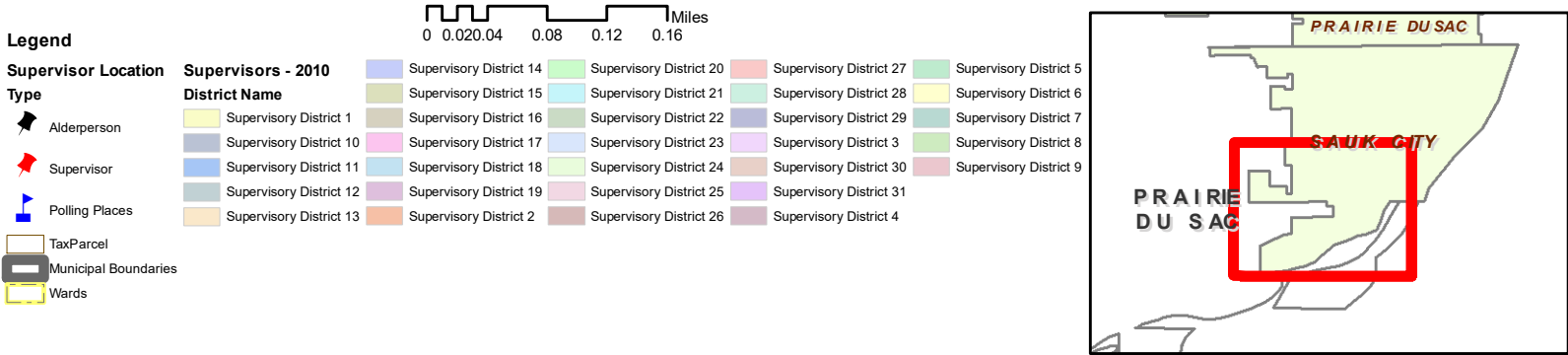
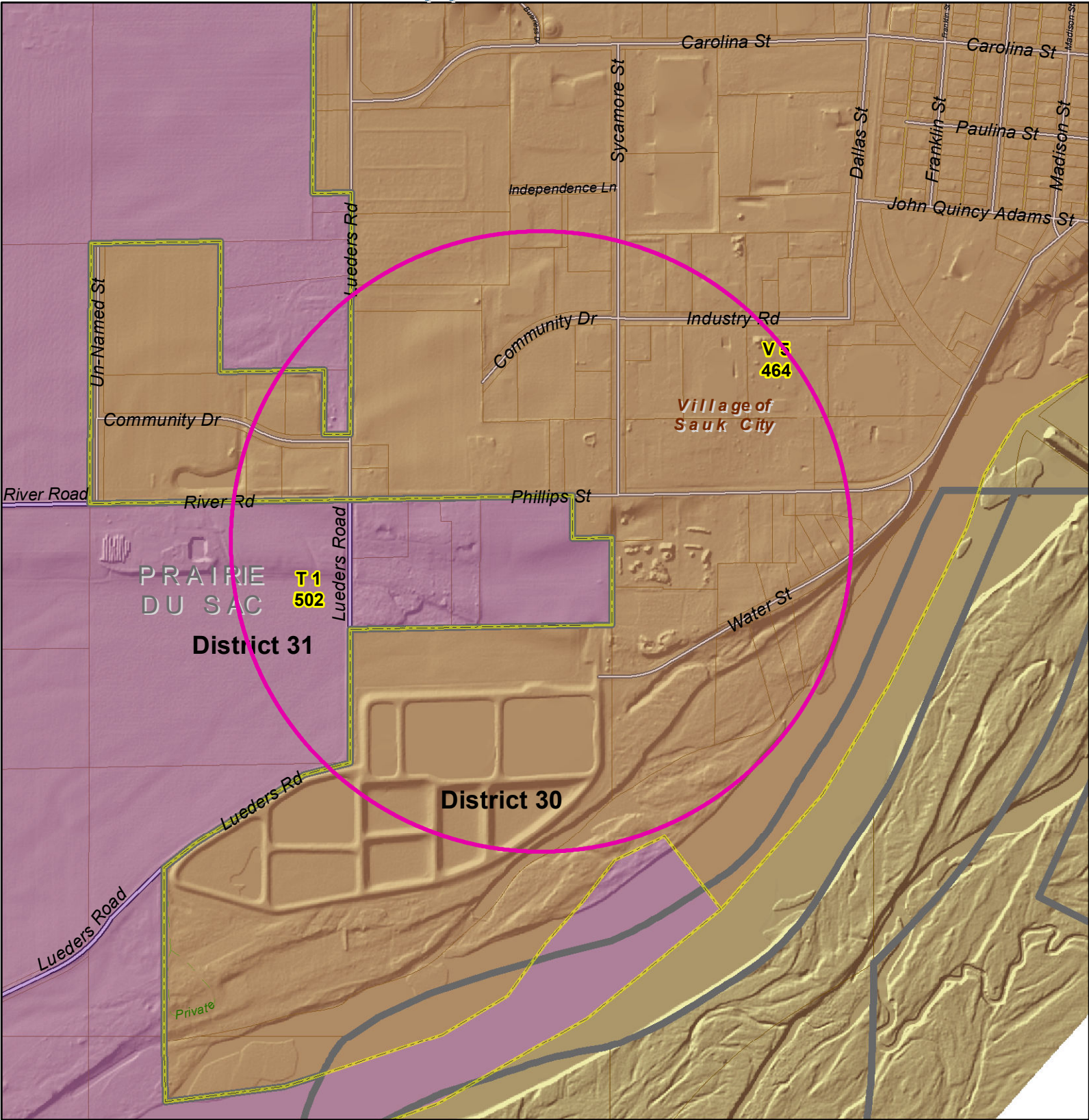
A parcel of land being part of the Northeast Quarter of the Northwest Quarter Section 13, Town 9 North, Range 6 East, Town of Prairie du Sac, Sauk County, Wisconsin, described as follows:

Commencing at the Northwest Corner of Section 13, Town 9 North, Range 6 East; thence, S89°41'09"E, 659.57 feet along the north line of said section to the northeast corner of Lot 2, Certified Survey Map (CSM) 4273 and Point of Beginning of this description; thence, continuing along the north line of the NE1/4 of the NW1/4 of said Section 13 S89°41'09"E, 460.06 feet to the northwest corner of Lot 1 Sauk County CSM 5686; thence, S01°33'24"W, 220.00 feet along the west line of Lot 1 of said CSM 5686; thence, S89°41'09"E, 200.00 feet along the south line of said CSM 5686; thence, S01°33'03"W, 441.85 feet to the northeast corner of Lot 1, CSM 3811; thence, N89°27'24"W, 658.92 feet along the north line of Lot 1, CSM 3811 to the southwest corner of Lot 2, CSM 4273; thence, N1°27'30"E, 659.19 feet along the east line of said Lot 2, CSM 4273 and the Point of Beginning.



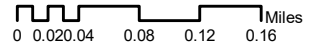
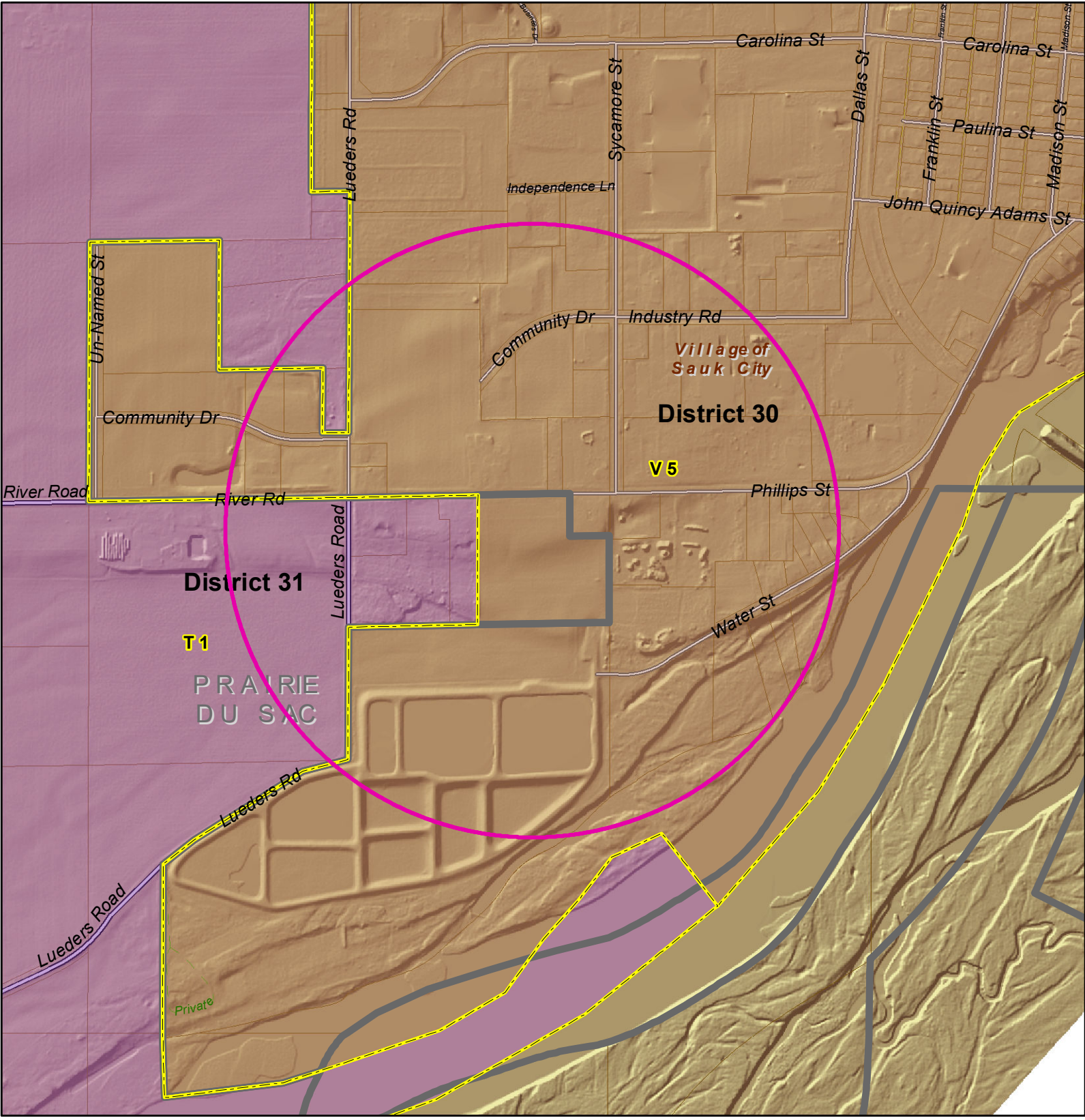
Sauk County Land Information\GIS Department

Approved Plan





Sauk County Land Information\GIS Department Proposed Plan



Legend

- Supervisor Location Type**
- Aldersperson
 - Supervisor
 - Polling Places
 - Municipal Boundaries
 - Wards_Proposed

- Supervisors_Proposed District Name**
- Supervisory District 1
 - Supervisory District 10
 - Supervisory District 11
 - Supervisory District 12
 - Supervisory District 13
 - Supervisory District 14
 - Supervisory District 15
 - Supervisory District 16
 - Supervisory District 17
 - Supervisory District 18
 - Supervisory District 19
 - Supervisory District 2
 - Supervisory District 20
 - Supervisory District 21
 - Supervisory District 22
 - Supervisory District 23
 - Supervisory District 24
 - Supervisory District 25
 - Supervisory District 26
 - Supervisory District 27
 - Supervisory District 28
 - Supervisory District 29
 - Supervisory District 3
 - Supervisory District 30
 - Supervisory District 31
 - Supervisory District 4
 - Supervisory District 5
 - Supervisory District 6
 - Supervisory District 7
 - Supervisory District 8
 - Supervisory District 9

