

EXHIBIT B

EASEMENT DESCRIPTION MAP

PART OF THE SE1/4 OF THE NW1/4, SECTION 34,
T12N, R06E, VILLAGE OF WEST BARABOO, SAUK COUNTY, WISCONSIN



EASEMENT AREA

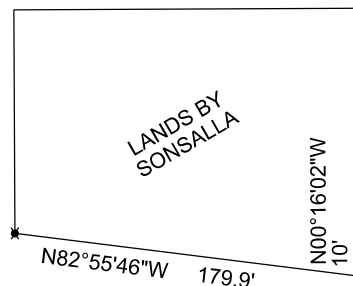
LANDS BY
SAUK COUNTY

CO. HWY BLDG.

LOT 1

CSM 4809

LANDS BY
MRED ASSOCIATES



N89°17'27"E 194.7'
S89°17'27"W 194.5'

S88°39'07"E 156.3'
N88°39'07"W 176.3'

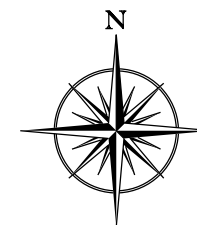
N00°11'53"E 20'
S88°39'07"E 20'
S00°25'30"W 30'

S. T. H. 136
(LINN ST.)

POB SW CORNER
CSM 4809

W 1/4 CORNER,
SECTION 34,
T12N, R06E

C 1/4 CORNER,
SECTION 34,
T12N, R06E



BEARINGS REFERENCED TO
THE SAUK COUNTY COORDINATE SYSTEM



This drawing shall be used solely for easement description
purposes and thus may only be relied upon for such purpose.

If this bar does not measure 1"
then drawing is not to scale.

0 25 50 100
SCALE: 1" = 100'

UNDRGRND ELECTRIC EASEMENT

PRT OF SE-NW, SEC 34, T12N, R06E, VILLAGE
OF W. BARABOO, SAUK COUNTY, WISCONSIN

Drawn: SJF	Date: 01/11/2018
Scale: 1" = 100'	SHEET 1 OF 1