

6
on spreadsheet

DOC#: 1134470
Recorded
August 01, 2016 9:00 AM

Theresa Bailey

REGISTRAR'S OFFICE
SAUK COUNTY WI
RECEIVED FOR RECORD
Fee Amount:: \$30.00

ORDINANCE NO. 1831-16
(Annexation - Lindloff Property: Parcel# 030-0036-00000)

The City of Reedsburg, Sauk County, Wisconsin, does hereby ordain as follows:

SECTION I: PURPOSE:

The purpose of this ordinance is to annex property pursuant to Wis. Stat. sec. 66.0217(2).

SECTION II: PROPERTY ANNEXED:

Part of Lot Two (2) of Certified Survey Map No. 1895, recorded in Volume 8 of Certified Survey Maps, Page 1895, as Document No. 504338, and part of the Southwest 1/4 of the Northeast 1/4 of Section 2, Township 12 North, Range 4 East, Town of Reedsburg, Sauk County, Wisconsin, being more fully described as follows:

Beginning at the Northeast corner of said Lot Two (2), Certified Survey Map No. 1895; thence S00°07'17"W, along the East line of said Lot Two (2), 603.87 feet to the Northeast corner of the Plat of Heritage Valley; thence S89°04'15"W, along the North line of said Plat; 120.02 feet; thence S71°25'42"W, along said North line, 69.65 feet; thence S89°18'18"W, along said North line, 144.87 feet; thence S00°05'10"W, along said North line, 67.26 feet; thence S89°17'18"W, along said North line, 403.50 feet; thence S60°28'19"W, along said North line, 79.41 feet; thence N83°48'59"W, along said North line, 332.89 feet to the centerline of C.T.H. "H" (a/k/a/ Viking Drive); thence N10°38'54"E, along said centerline, 192.16 feet; thence Northeasterly, along said centerline, on the arc of a curve to the right, 561.35 feet, having a chord which bears N24°23'09"E, 555.75 feet to the Westerly extension of the North line of said Lot Two (2); thence N89°19'14"E, along the North line of said Lot Two (2) and its Westerly extension thereof, 870.88 feet to the point of beginning.

Containing 16.13 acres of land more or less. Municipal Boundary Review number 13921.
The population of the territory to be annexed is zero (0).

A property map may be obtained or accessed from the City Clerk at Reedsburg City Hall, 134 S. Locust St, Reedsburg, WI; (608) 524-6404; www.reedsburgwi.gov.

SECTION III: VALIDITY:

Should any section, clause or provision of the Ordinance be declared by the Courts to be invalid, the same shall not affect the validity of the Ordinance as a whole or any part thereof, other than the part so declared to be invalid.

SECTION IV: CONFLICTING PROVISIONS REPEALED:

All ordinances in conflict with any provision of this Ordinance are hereby repealed.

SECTION V: EFFECTIVE DATE:

This ordinance shall be in force from and after its introduction and publication as provided by statute.

SECTION VI: PART OF CODE:

This Ordinance becomes part of the zoning map of the City of Reedsburg.

Dated this 13th day of June, 2016.

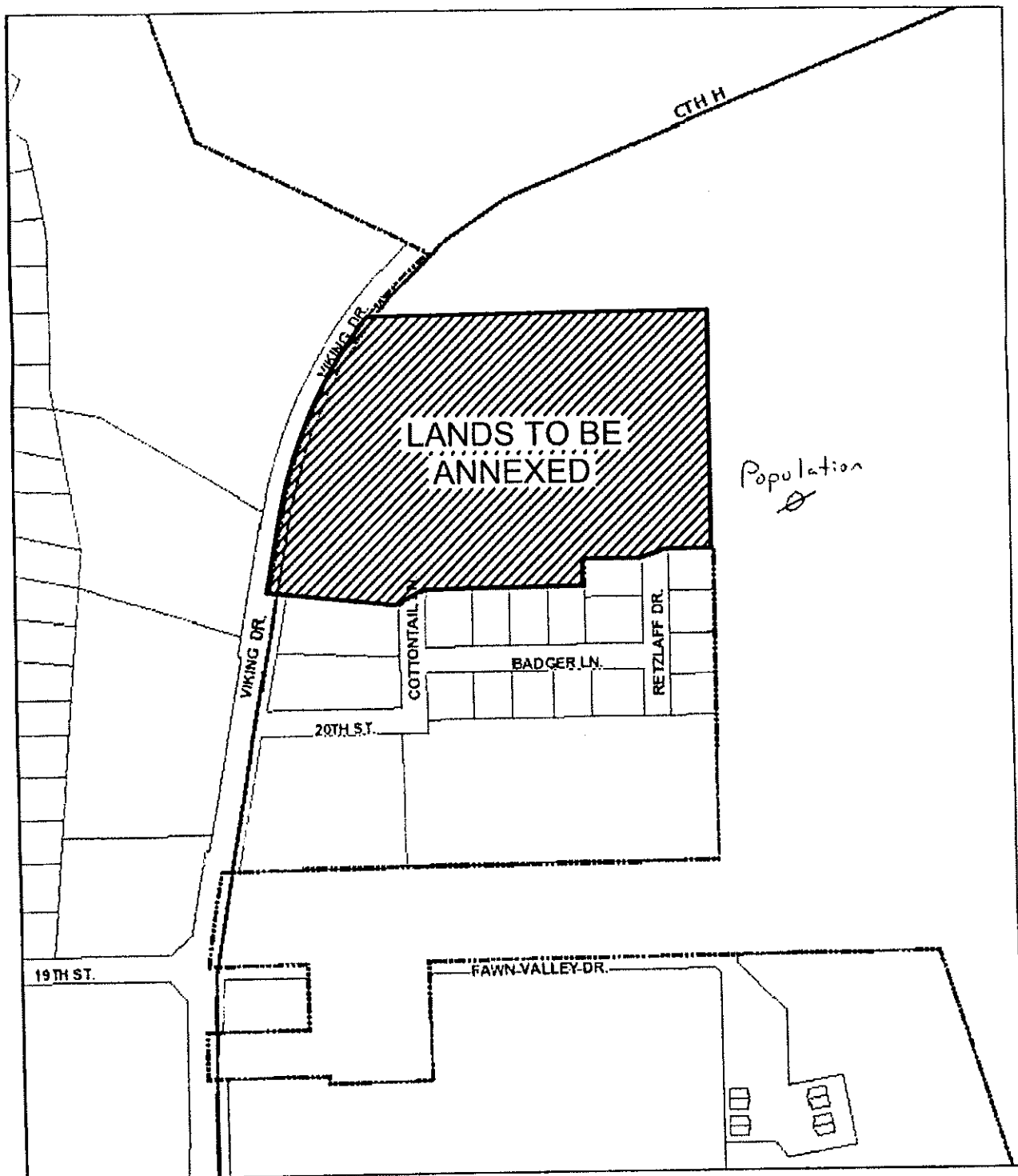
David G. Estes
David G. Estes, Mayor

Julie Strutz
Julie Strutz, Clerk/Treasurer

1st Reading at Council:
Public Hearing Noticed:
2nd Reading at Council/Public Hearing:
Published, Enactment Date:

May 23, 2016
June 2, 2016
June 13, 2016
June 23, 2016

36 chg
(2)



City of Reedsburg GIS

DISCLAIMER: The City of Reedsburg does not guarantee the accuracy of the material contained here in and is not responsible for any misuse or misrepresentation of this information or its derivatives.



SCALE: 1" = 338'

CITY OF REEDSBURG

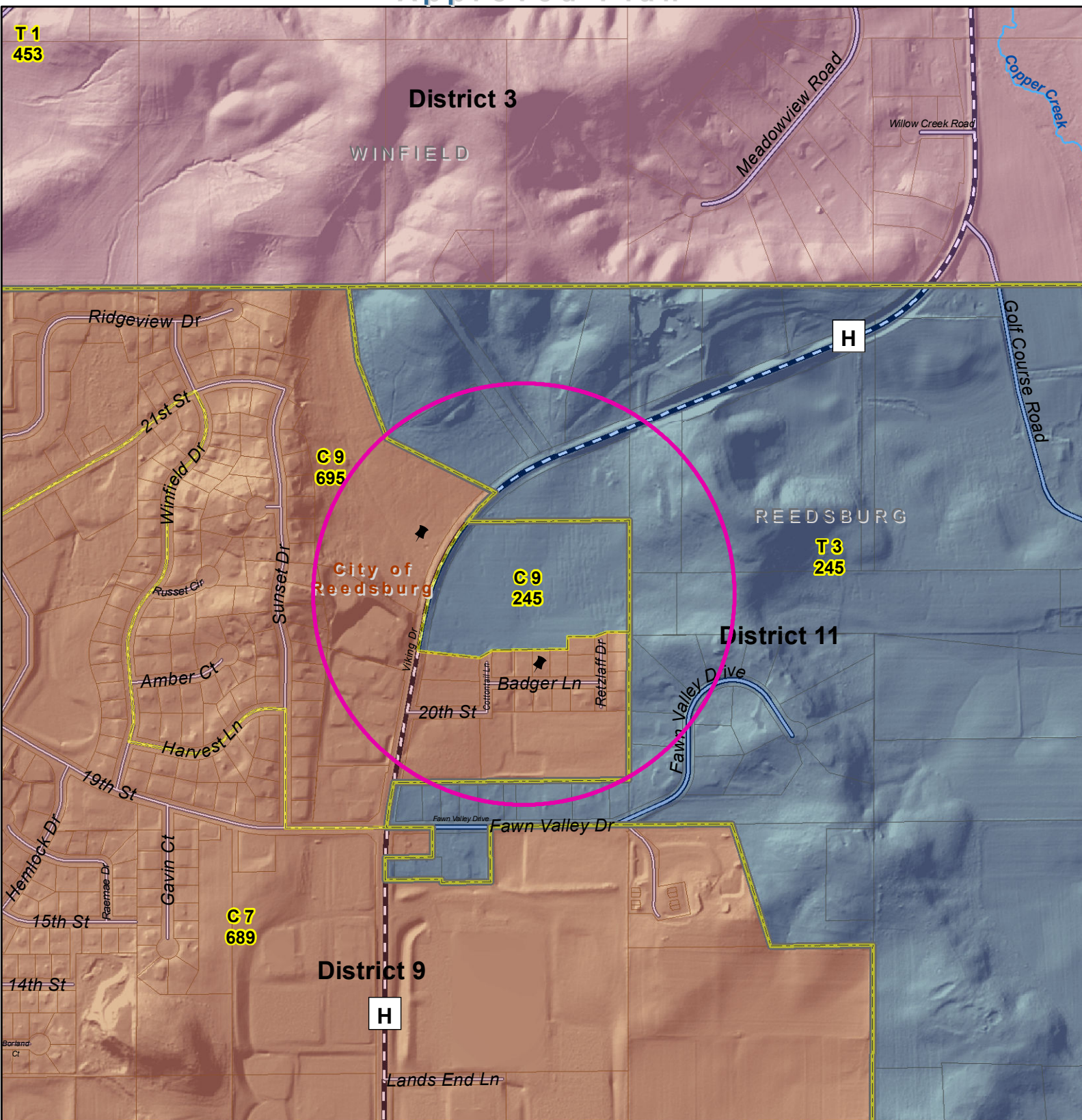
134 S. Locust Street
PO Box 490
Reedsburg, VA 53959
608-524-6404

Print Date: 2/2/2016



Sauk County Land Information\GIS Department

Approved Plan



Legend

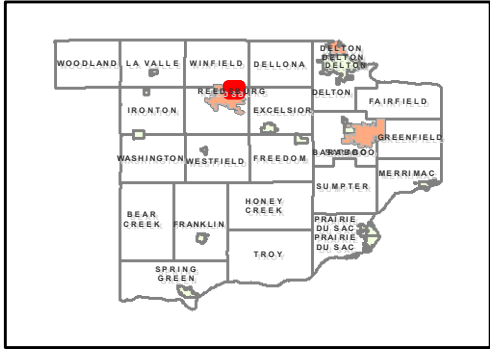
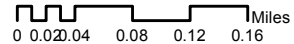
- Supervisor Location**
- Type**
- Aldersperson
 - Supervisor
 - Polling Places
 - TaxParcel
 - Municipal Boundaries
 - Wards

- Supervisors - 2010**
- District Name**
- Supervisory District 1
 - Supervisory District 10
 - Supervisory District 11
 - Supervisory District 12
 - Supervisory District 13
 - Supervisory District 14
 - Supervisory District 15
 - Supervisory District 16
 - Supervisory District 17
 - Supervisory District 18
 - Supervisory District 19
 - Supervisory District 2

- Supervisory District 20
- Supervisory District 21
- Supervisory District 22
- Supervisory District 23
- Supervisory District 24
- Supervisory District 25
- Supervisory District 26

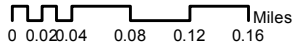
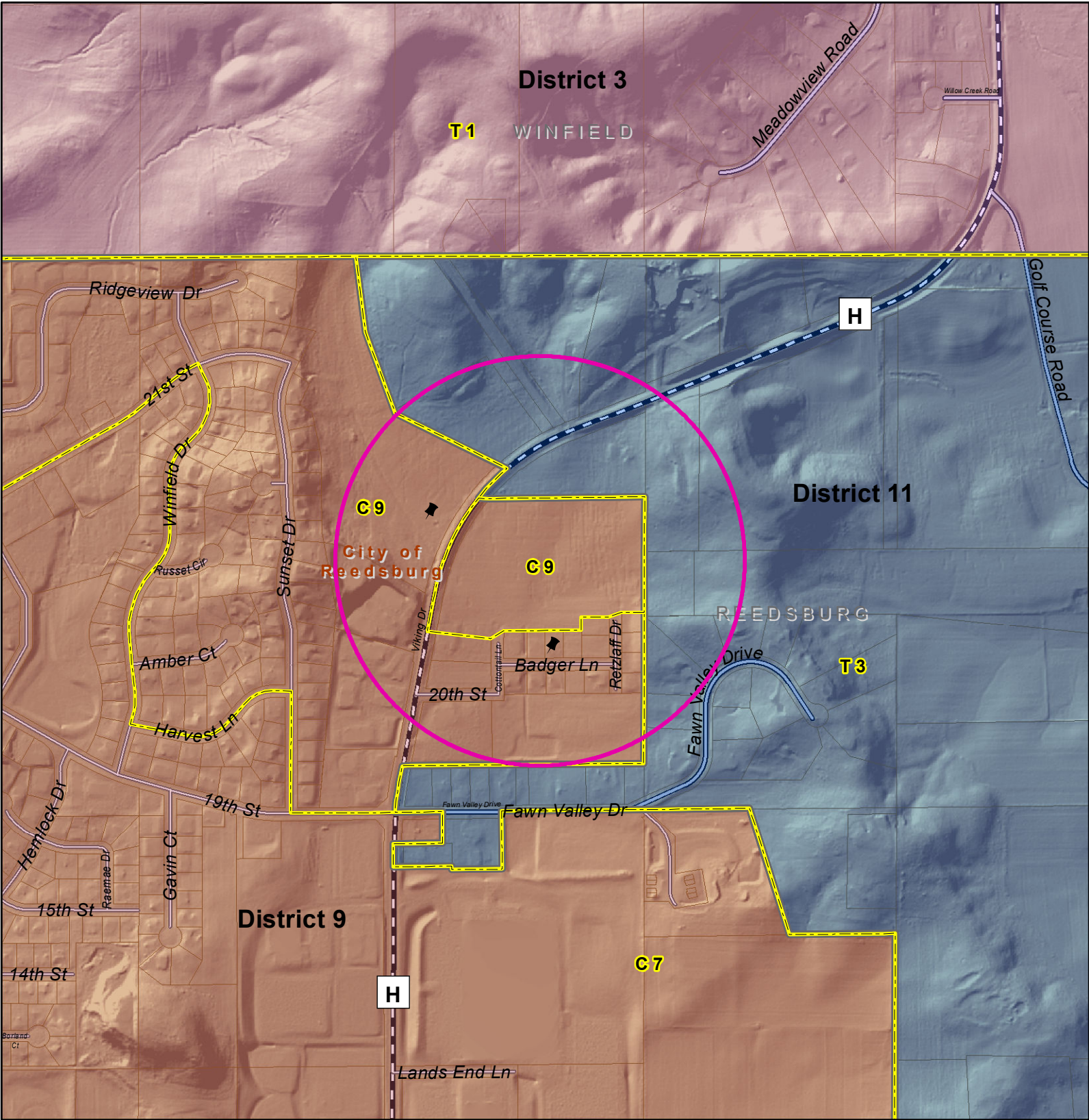
- Supervisory District 27
- Supervisory District 28
- Supervisory District 29
- Supervisory District 30
- Supervisory District 31
- Supervisory District 4

- Supervisory District 5
- Supervisory District 6
- Supervisory District 7
- Supervisory District 8
- Supervisory District 9





Sauk County Land Information\GIS Department Proposed Plan



Legend

- Supervisor Location Type**
- Aldersperson
 - Supervisor
 - Polling Places
 - Municipal Boundaries
 - Wards_Proposed

- Supervisors_Proposed District Name**
- Supervisory District 1
 - Supervisory District 10
 - Supervisory District 11
 - Supervisory District 12
 - Supervisory District 13
 - Supervisory District 14
 - Supervisory District 15
 - Supervisory District 16
 - Supervisory District 17
 - Supervisory District 18
 - Supervisory District 19
 - Supervisory District 2
 - Supervisory District 20
 - Supervisory District 21
 - Supervisory District 22
 - Supervisory District 23
 - Supervisory District 24
 - Supervisory District 25
 - Supervisory District 26
 - Supervisory District 27
 - Supervisory District 28
 - Supervisory District 29
 - Supervisory District 3
 - Supervisory District 30
 - Supervisory District 31
 - Supervisory District 4
 - Supervisory District 5
 - Supervisory District 6
 - Supervisory District 7
 - Supervisory District 8
 - Supervisory District 9

