

#5 on Spreadsheet

Document Number	Annexation
<p>DOC#: 1095495</p> <p>Recorded July 25, 2014 9:00 AM</p> <p><i>Deed Entry</i></p> <p>REGISTRAR'S OFFICE SOLIN COUNTY WI RECEIVED FOR RECORD Fee Amount: \$38.00</p>	
<p>Recording Area</p> <p>Name and Return Address</p> <p><i>City of Reedsburg</i> <i>PO BOX 490</i></p> <p>3509 ③</p>	
<p>Parcel Identification Number (PIN)</p> <p>This information must be completed by submitter: document title, name &amp; return address, and PIN (if required). Other information such as the grading clauses, legal description, etc. may be placed on this first page of the document or may be placed on additional pages of the document. Note: Use of this cover page adds one page to your document and \$2.00 to the recording fee. Wisconsin Statutes, 59.43(2m) WRDA 2/99</p>	

ORDINANCE NO. 1793-14  
(Annexation - City of Reedsburg, Middlesteadt Road)

The City of Reedsburg, Sauk County, Wisconsin, does hereby ordain as follows:

SECTION I: PURPOSE.

The purpose of this ordinance is to annex property owned by the City of Reedsburg pursuant to Wis. Stat. sec. 66.0223. The ordinance is also designed to amend the zoning map.

SECTION II: PROPERTY ANNEXED

Part of the NW ¼ of the NE ¼ of Section 3, T12N, R4E, Town of Reedsburg, Sauk County Wisconsin and the SW ¼ of the SE ¼ of Section 34, T13N, R4E, Town of Winfield, Sauk County Wisconsin, bound by the following described line:

Commencing at the Northwest corner of Outlot 3 of the Seventh Addition to Ernstmeyer Acres; thence North 16.5 feet to the Town of Winfield limits; thence west 7.26 feet to the SW ¼ of the SE ¼ of Section 34; thence North 33 feet; thence east +/-1321.4 feet to the centerline of Highway K and existing City limits; thence South 49.5 feet; thence West +/-1314.14 feet to the point of beginning.

Containing 1.50 acres more or less.

A scale map showing the boundaries of the above described territory and the relationship of the territory to the City of Reedsburg is attached.

The population of the territory to be annexed is zero (0).

SECTION III: VALIDITY:

Should any section, clause or provision of the Ordinance be declared by the Courts to be invalid, the same shall not affect the validity of the Ordinance as a whole or any part thereof, other than the part so declared to be invalid.

SECTION IV: CONFLICTING PROVISIONS REPEALED:

All ordinances in conflict with any provision of this Ordinance are hereby repealed.

SECTION V: EFFECTIVE DATE:


This ordinance shall be in force from and after its introduction and publication as provided by statute.

SECTION VI: PART OF CODE:

This Ordinance becomes part of the zoning map of the City of Reedsburg.

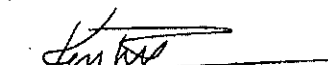
Dated this 14<sup>th</sup> day of July, 2014.

  
David G. Estes, Mayor

  
Ken Witt, Administrator/Clerk/Treasurer

I, Kenneth L. Witt, City Clerk for the City of Reedsburg do hereby certify that the foregoing ordinance is a true, correct and complete copy of an ordinance duly and regularly passed by the Common Council of the City of Reedsburg on the 14<sup>th</sup> day of July, 2014 and that said ordinance has not been repealed or amended and is now in full force and effect.

Dated this 24<sup>th</sup> day of July, 2014.

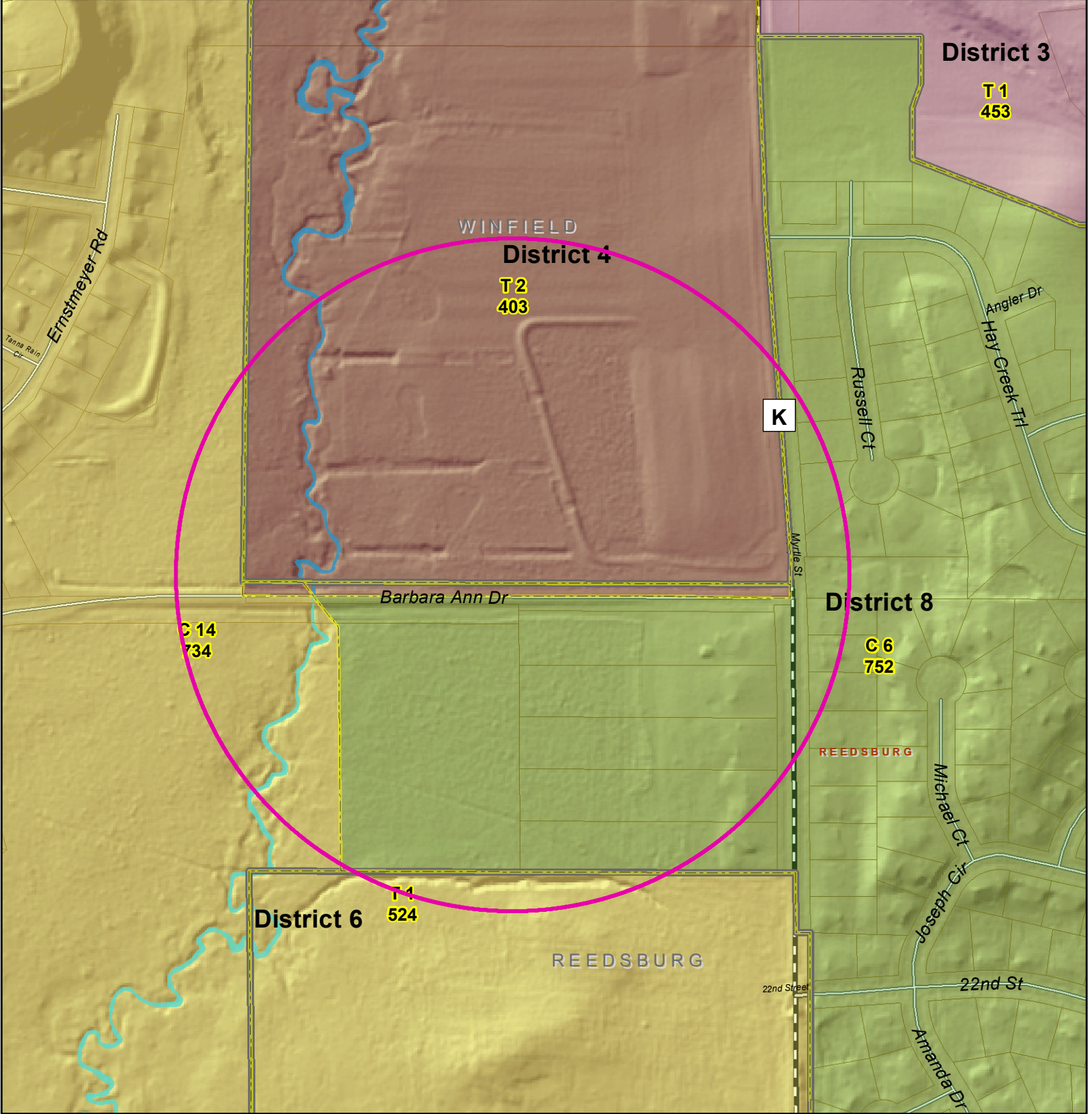
  
Kenneth L. Witt, City Clerk

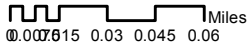


# MITTLESTAEDT ROAD ANNEXATION

SCALE: 1" = 200'  
05-23-2014







Miles  
0.007615 0.03 0.045 0.06

### Legend

**Supervisor Location**

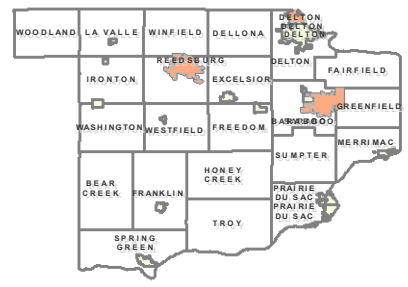
**Type**

- Aldersperson
- Supervisor
- Polling Places
- TaxParcel
- Municipal Boundaries
- Wards

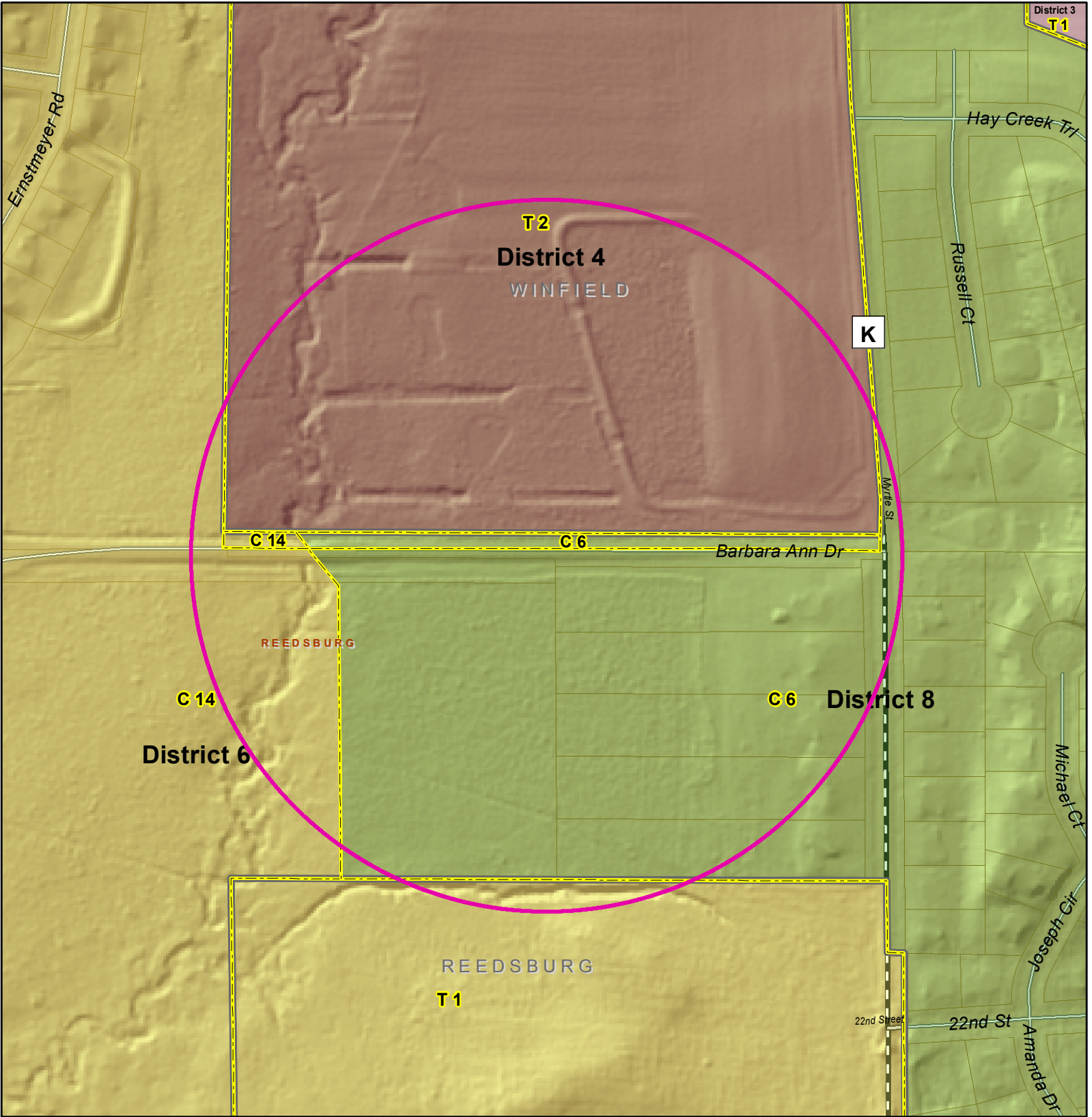
**Supervisors - 2010**

**District Name**

- Supervisory District 1
- Supervisory District 2
- Supervisory District 3
- Supervisory District 4
- Supervisory District 5
- Supervisory District 6
- Supervisory District 7
- Supervisory District 8
- Supervisory District 9
- Supervisory District 10
- Supervisory District 11
- Supervisory District 12
- Supervisory District 13
- Supervisory District 14
- Supervisory District 15
- Supervisory District 16
- Supervisory District 17
- Supervisory District 18
- Supervisory District 19
- Supervisory District 20
- Supervisory District 21
- Supervisory District 22
- Supervisory District 23
- Supervisory District 24
- Supervisory District 25
- Supervisory District 26
- Supervisory District 27
- Supervisory District 28
- Supervisory District 29
- Supervisory District 30
- Supervisory District 31







### Legend

**Supervisor Location Type**

- Aldersperson
- Supervisor
- Polling Places
- Municipal Boundaries
- Wards\_Proposed

**Supervisors\_Proposed District Name**

Supervisory District 1	Supervisory District 14	Supervisory District 27
Supervisory District 10	Supervisory District 15	Supervisory District 28
Supervisory District 11	Supervisory District 16	Supervisory District 29
Supervisory District 12	Supervisory District 17	Supervisory District 30
Supervisory District 13	Supervisory District 18	Supervisory District 31
	Supervisory District 19	Supervisory District 25
	Supervisory District 2	Supervisory District 26
		Supervisory District 4
	Supervisory District 20	Supervisory District 5
	Supervisory District 21	Supervisory District 6
	Supervisory District 22	Supervisory District 7
	Supervisory District 23	Supervisory District 8
	Supervisory District 24	Supervisory District 9

