

Charles & Roberta Mayer  
Annexation

Document Number

Document Title 000093

C. Reidsby # 4  
on Spreadsheet

DOC# 1023104

Recorded  
Dec. 20, 2010 AT 08:30AM

*Reidsby*

REGISTRAR'S OFFICE  
SAUK COUNTY WI  
RECEIVED FOR RECORD

③ Fee Amount: \$30.00  
Recording Area

399

Name & Return Address

City of Reedsburg  
PO Box 490  
Reedsburg, WI 53959

030-0393-00000

Parcel Identification Number

This information must be completed by the submitter: document title, name & return address, and parcel identification number (if required). Other information such as the granting clauses, legal description, etc. may be placed on this first page of the document or may be placed on additional pages of the document. Note: Use of this cover page adds one page to your document and \$2.00 to the recording fee per Wisconsin Statutes 59.517.

ORDINANCE NO. -1733-10  
(Annexation – Charles & Roberta Mayer)

The City of Reedsburg, Sauk County, Wisconsin, does hereby ordain as follows:

SECTION I: PURPOSE.

The purpose of this ordinance is to annex property pursuant to Wis. Stat. sec. 66.0217(2).

SECTION II: PROPERTY ANNEXED

A parcel of land located in the Southeast Quarter of the Southwest Quarter, Section 12, T12N, R4E, Town of Reedsburg, Sauk County, Wisconsin, described as follows:

Beginning at the South Quarter Corner of said Section 12; thence N89°44'15"W, 1331.14 feet to the southwest corner of the Southeast Quarter of the Southwest Quarter of Section 12; thence N00°34'00"W along the west line of said Southeast Quarter of the Southwest Quarter, 1262.04 feet to the south right of way line of Zinga Drive; thence N89°50'57"E along said south right of way line of Zinga Drive, 79.12 feet to its intersection with the east right of way line of Wengel Drive; thence N00°35'35"W along said east right of way line of Wengel Drive, 66.00 feet to the north line of the Southeast Quarter of the Southwest Quarter of Section 12; thence East along said north line of the Southeast Quarter of the Southwest Quarter to the west line of the east 702.5 feet thereof; thence South along the west line of the east 702.5 feet of the Southeast Quarter of the Southwest Quarter of Section 12 to the south line of the north 620 feet thereof; thence east along said south line of the north 620 feet of the east 702.5 feet of the Southeast Quarter of the Southwest Quarter of Section 12 to the east line thereof; thence South along the east line of the Southeast Quarter of the Southwest Quarter of Section 12 to the Point of Beginning.

Containing 29.88 acres more or less. MBR number is 13504.

This annexation has a zero (0) increase on the City's population.

SECTION III: VALIDITY.

Should any section, clause or provision of the ordinance be declared by the courts to be invalid, the same shall not affect the validity of the ordinance as a whole or any part thereof, other than the part so declared to be invalid.

SECTION IV: CONFLICTING PROVISIONS REPEALED.

All ordinances in conflict with any provisions of the ordinance are hereby repealed.

SECTION V: EFFECTIVE DATE.

This ordinance shall be in force from and after its introduction and publication as provided by statute.

SECTION VI.

This ordinance becomes a part of the zoning map of the City of Reedsburg.

  
David G. Estes, Mayor

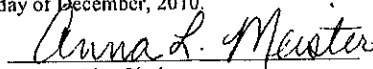
  
Anna L. Meister, City Clerk

INTRODUCED: November 8, 2010  
PUBLISHED: December 23, 2010  
PASSED: December 13, 2010

State of Wisconsin)  
County of Sauk)

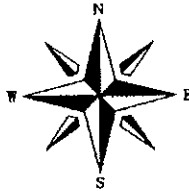
I hereby certify that the foregoing ordinance is a true, correct, and complete copy of an ordinance duly and regularly passed by the Common Council of the City of Reedsburg on the 13<sup>th</sup> day of December, 2010 and that said ordinance has not been repealed or amended and is now in full force and effect.

Dated this 14<sup>th</sup> day of December, 2010.

  
City Clerk

000095

# ANNEXATION SKETCH



## LEGEND



PROPOSED ANNEXATION

SCALE 1"=300'

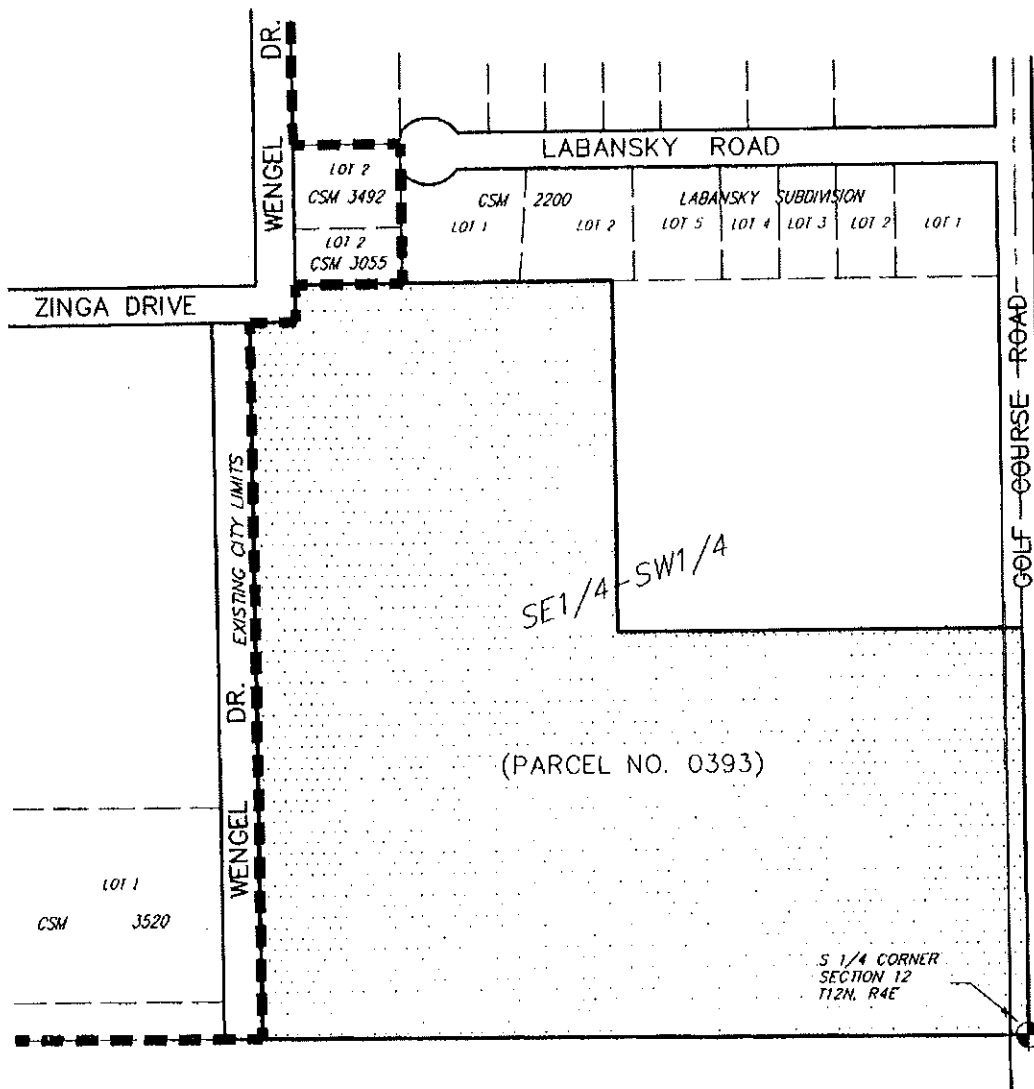
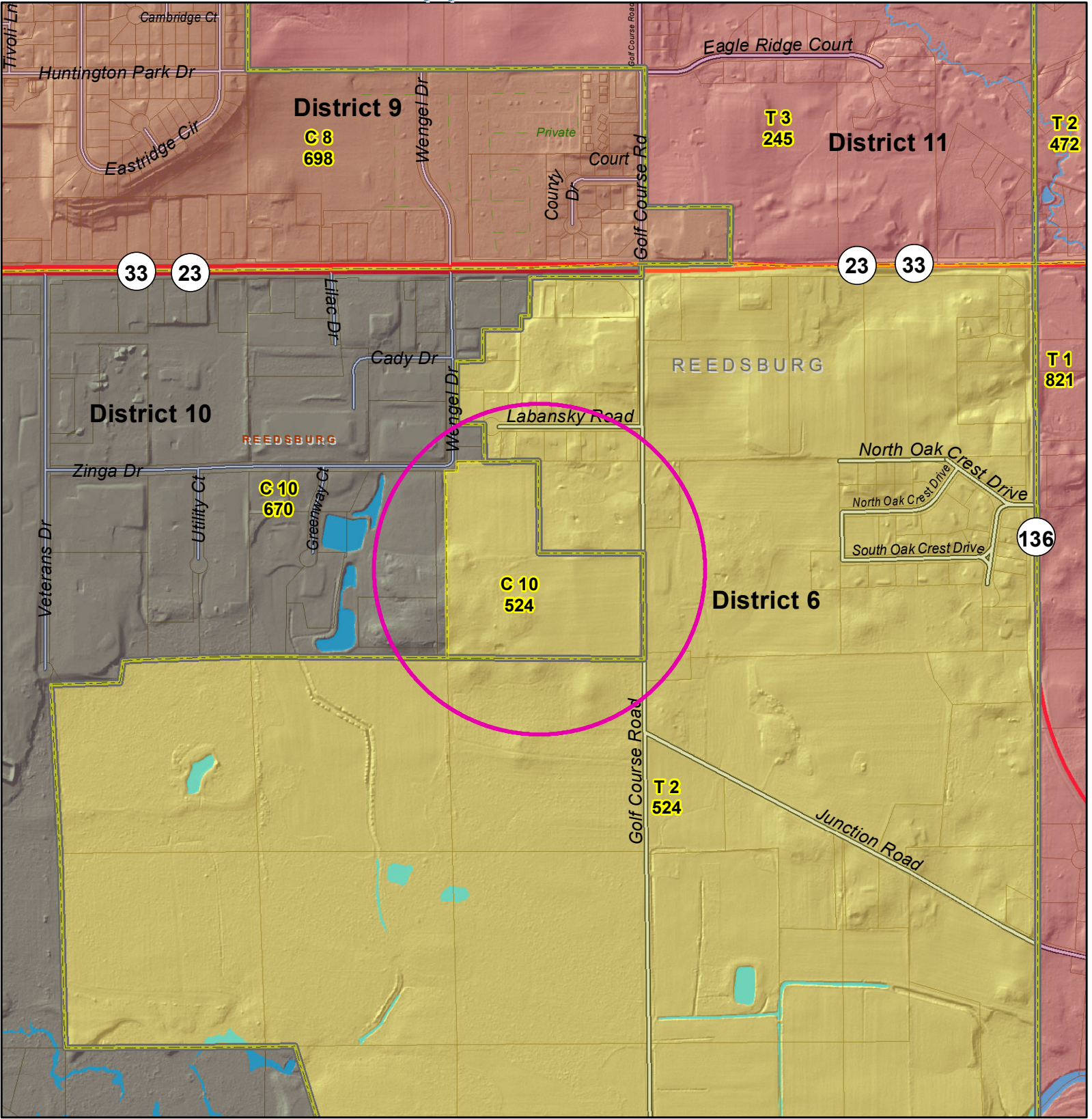


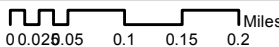
EXHIBIT **B**

**vierbicher**

planners | engineers | advisors

REEDSBURG - MADISON - PRAIRIE DU CHIEN  
400 Vining Drive P.O. 309, Reedsburg, Wisconsin 53959  
Phone: (608) 524-4468 Fax: (608) 524-8218





0.0 0.026 0.05 0.1 0.15 0.2 Miles

### Legend

**Supervisor Location**

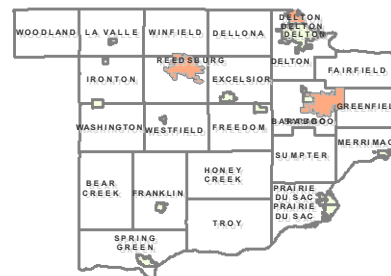
**Type**

- Aldersperson
- Supervisor
- Polling Places
- TaxParcel
- Municipal Boundaries
- Wards

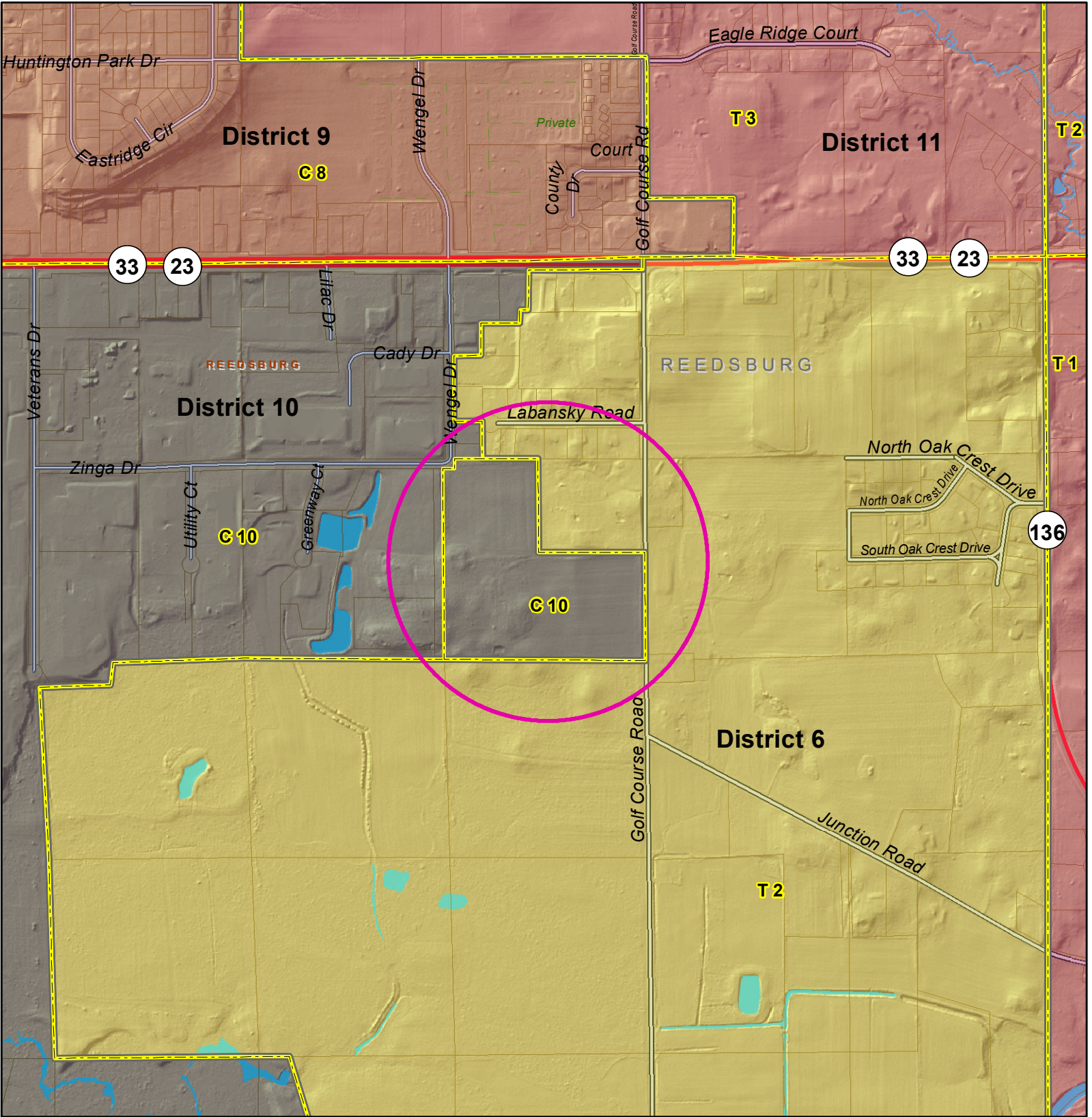
**Supervisors - 2010**

**District Name**

- Supervisory District 1
- Supervisory District 10
- Supervisory District 11
- Supervisory District 12
- Supervisory District 13
- Supervisory District 14
- Supervisory District 15
- Supervisory District 16
- Supervisory District 17
- Supervisory District 18
- Supervisory District 19
- Supervisory District 2
- Supervisory District 20
- Supervisory District 21
- Supervisory District 22
- Supervisory District 23
- Supervisory District 24
- Supervisory District 25
- Supervisory District 26
- Supervisory District 27
- Supervisory District 28
- Supervisory District 29
- Supervisory District 3
- Supervisory District 30
- Supervisory District 31
- Supervisory District 4
- Supervisory District 5
- Supervisory District 6
- Supervisory District 7
- Supervisory District 8
- Supervisory District 9







**Legend**

**Supervisor Location Type**

- Aldersperson
- Supervisor
- Polling Places
- Municipal Boundaries
- Wards\_Proposed

**Supervisors\_Proposed District Name**

- Supervisory District 1
- Supervisory District 10
- Supervisory District 11
- Supervisory District 12
- Supervisory District 13
- Supervisory District 14
- Supervisory District 15
- Supervisory District 16
- Supervisory District 17
- Supervisory District 18
- Supervisory District 19
- Supervisory District 2
- Supervisory District 20
- Supervisory District 21
- Supervisory District 22
- Supervisory District 23
- Supervisory District 24
- Supervisory District 25
- Supervisory District 26
- Supervisory District 27
- Supervisory District 28
- Supervisory District 29
- Supervisory District 3
- Supervisory District 30
- Supervisory District 31
- Supervisory District 4
- Supervisory District 5
- Supervisory District 6
- Supervisory District 7
- Supervisory District 8
- Supervisory District 9