

#13 Spread Sheet

Document Number	Detachment Ordinance 000008	DOC# 1014091 Recorded Aug. 18, 2010 AT 08:30AM <i>Shant Bailey</i> REGISTRAR'S OFFICE SAUK COUNTY WI RECEIVED FOR RECORD Fee Amount: \$30.00 Recording Area
Name & Return Address City of Reedsburg 134 S. Locust Street PO Box 490 Reedsburg, WI 53959		

276-1801-00000
Parcel Identification Number

This information must be completed by the submitter: document title, name & return address, and parcel identification number (if required). Other information such as the granting clauses, legal description, etc. may be placed on this first page of the document or may be placed on additional pages of the document. Note: Use of this cover page adds one page to your document and \$2.00 to the recording fee per Wisconsin Statutes 59.517.

ORDINANCE NO. 1721-10
(Detachment Ordinance)

The Common Council, City of Reedsburg, Sauk County does hereby ordain as follows:

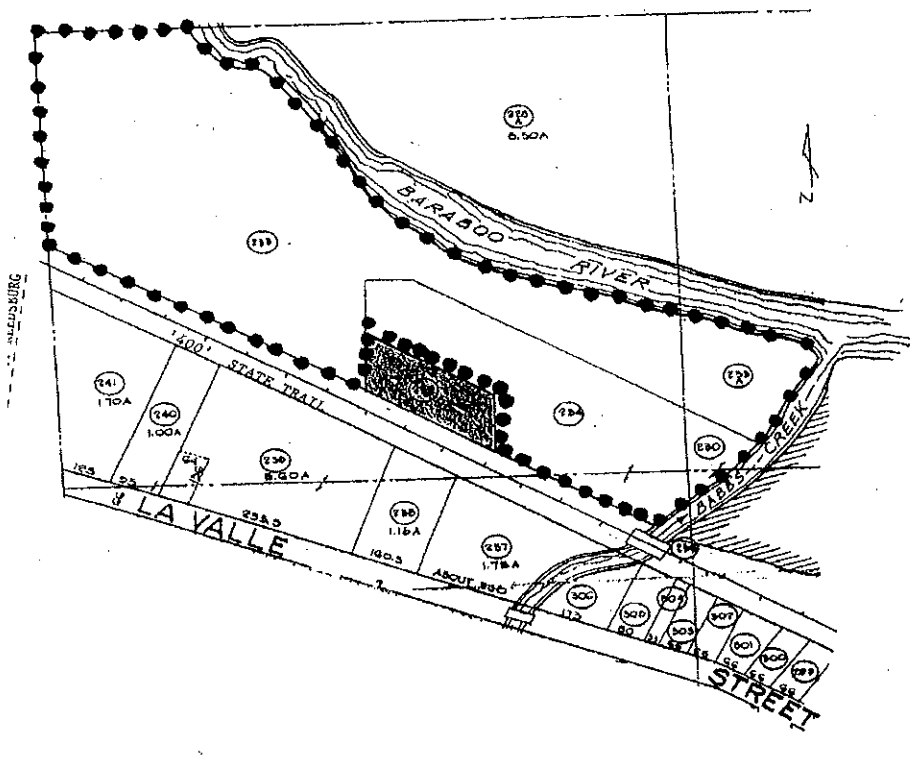
SECTION I: TERRITORY DETACHED:

In accordance with Wis. Stat. § 66.0227, and the Petition for Detachment of Territory filed with the City of Reedsburg, on the 18th day of May, 2010, signed by all of the electors in the territory and all of the owners of real property in the territory, the following described territory in the City of Reedsburg is hereby detached to the Town of Reedsburg:

Assessor's Lot 235 of the Assessor's Plat of the City of Reedsburg, Sauk County, Wisconsin.

Also lands in the Assessor's Lot 235, described as: Commencing at the North One-quarter corner of Section 9, T12N, R4E; thence South 01°00'57" East, 744.14 feet along the one-quarter line to the North line of the Chicago and Northwestern Railroad; thence South 58°30' East 710.69 feet along said right-of-way line to the Southwest corner of Assessor's Lot 235; thence North 156.42 feet to the Northwest corner of Assessor's Lot 235 and the point of beginning; thence South 58°30' East, 330 feet to the Northeast corner of Assessor's Lot 235; thence South 156.42 feet to the Southeast corner of Assessor's Lot 235, and the North line of the Chicago and Northwestern Railroad; thence South 58°30' East, 13.25 feet along said North line; thence North 01°16' East, 176.89 feet along a fence line to a fence corner; thence North 61°49' West, 336.47 feet along a fence to the point of beginning.

This is a map of the area to be detached.



SECTION II: EFFECT OF DETACHMENT:


From and after the date of this ordinance, the territory described in Section I shall be a part of the Town of Reedsburg for any and all purposes provided by law and all persons coming or residing within such territory shall be subject to all ordinances, rules and regulations governing the Town of Reedsburg.


SECTION III: VALIDITY:

If any provision of this ordinance is invalid or unconstitutional, or if the application of this ordinance to any person or circumstances is invalid or unconstitutional, such invalidity or unconstitutionality shall not effect the other provisions or applications of this ordinance which can be given effect without the invalid or unconstitutional provision or application.

SECTION VI: EFFECTIVE DATE:

This ordinance shall take effect upon passage and publication as provided by law and upon approval by the Town of Reedsburg.


David G Estes, Mayor

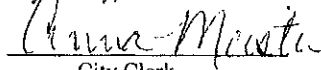

Anna Meister, Clerk-Treasurer

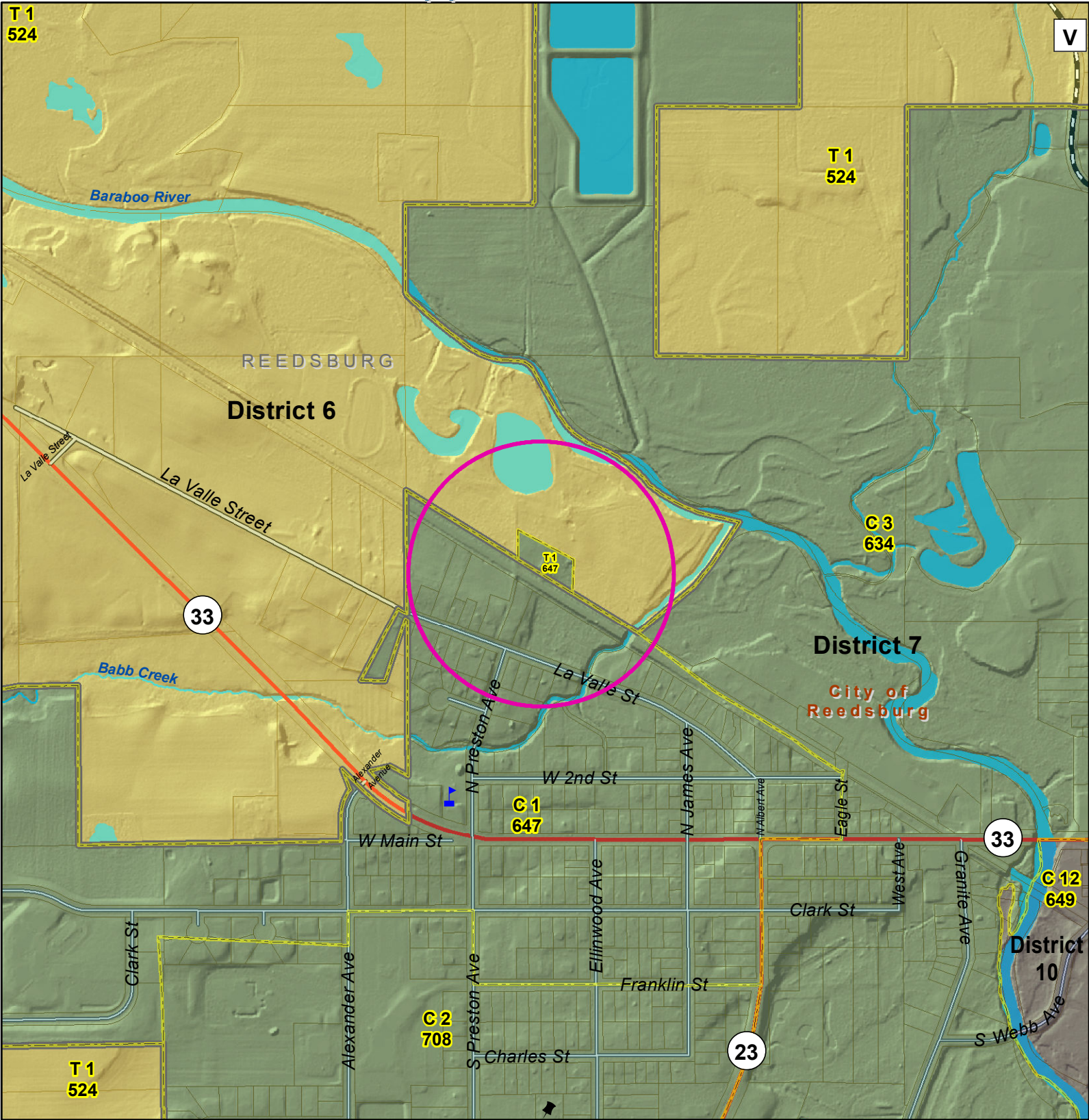
INTRODUCED: June 14, 2010
PUBLISHED: July 22, 2010
PASSED: July 12, 2010

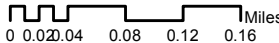
State of Wisconsin)
County of Sauk)

I hereby certify that the foregoing ordinance is a true, correct, and complete copy of an ordinance duly and regularly passed by the Common Council of the City of Reedsburg on the 12th day of July, 2010 and that said ordinance has not been repealed or amended and is now in full force and effect.

Dated this 13th day of July, 2010.


City Clerk











0 0.02 0.04 0.08 0.12 0.16 Miles

Legend



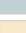




Supervisor Location

Type

-  Aldership
-  Supervisor
-  Polling Places
-  TaxParcel
-  Municipal Boundaries
-  Wards

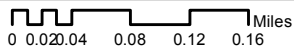
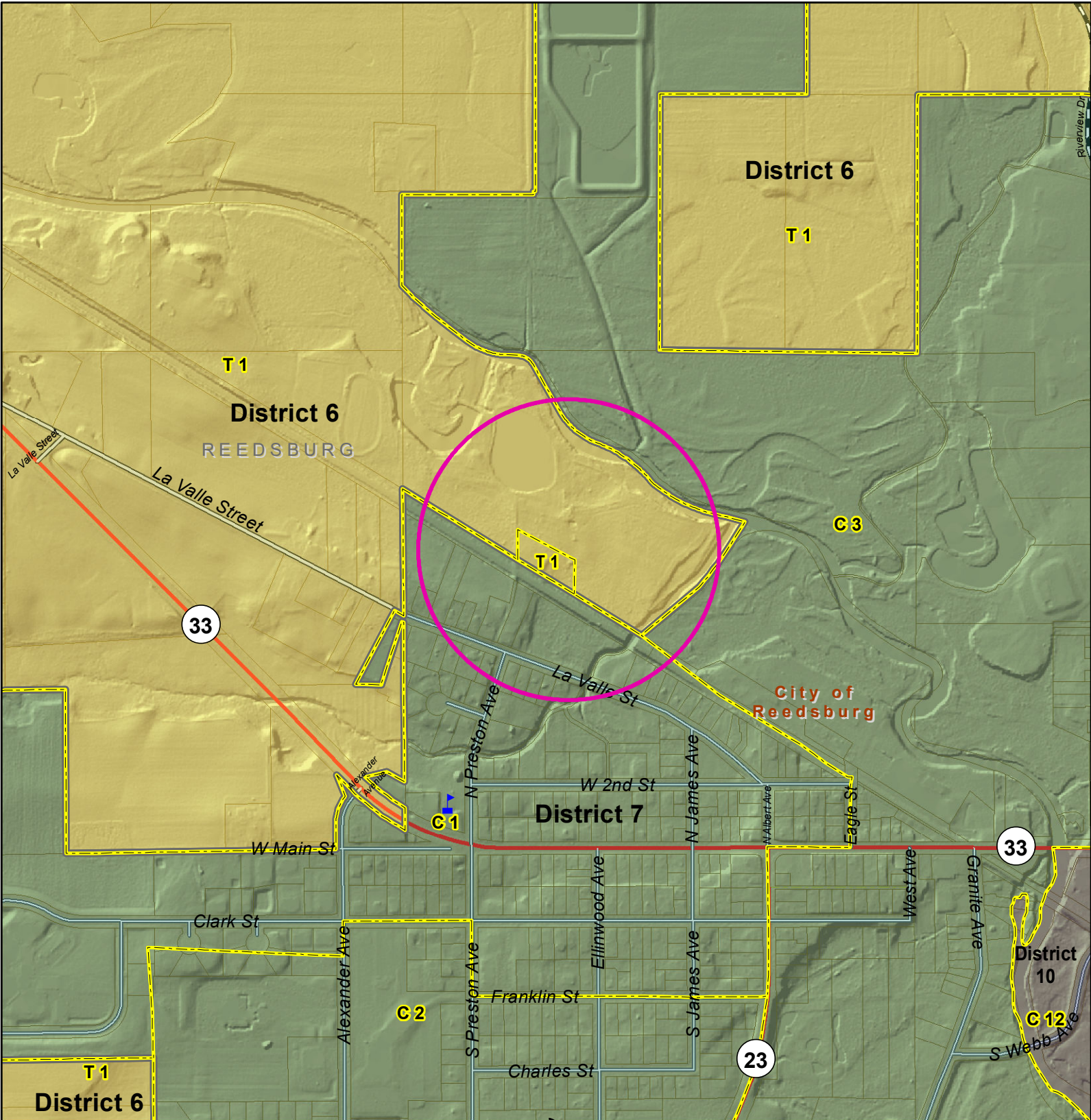
Supervisors - 2010

District Name

-  Supervisory District 1
-  Supervisory District 2
-  Supervisory District 3
-  Supervisory District 4
-  Supervisory District 5
-  Supervisory District 6
-  Supervisory District 7
- Supervisory District 8
- Supervisory District 9
- Supervisory District 10
- Supervisory District 11
- Supervisory District 12
- Supervisory District 13
- Supervisory District 14
- Supervisory District 15
- Supervisory District 16
- Supervisory District 17
- Supervisory District 18
- Supervisory District 19
- Supervisory District 20
- Supervisory District 21
- Supervisory District 22
- Supervisory District 23
- Supervisory District 24
- Supervisory District 25
- Supervisory District 26
- Supervisory District 27
- Supervisory District 28
- Supervisory District 29
- Supervisory District 30
- Supervisory District 31



Sauk County Land Information\GIS Department Proposed Plan



Legend

- Supervisor Location Type**
- Aldersperson
 - Supervisor
 - Polling Places
 - Municipal Boundaries
 - Wards_Proposed

- Supervisors_Proposed District Name**
- Supervisory District 1
 - Supervisory District 10
 - Supervisory District 11
 - Supervisory District 12
 - Supervisory District 13
 - Supervisory District 14
 - Supervisory District 15
 - Supervisory District 16
 - Supervisory District 17
 - Supervisory District 18
 - Supervisory District 19
 - Supervisory District 2
 - Supervisory District 20
 - Supervisory District 21
 - Supervisory District 22
 - Supervisory District 23
 - Supervisory District 24
 - Supervisory District 25
 - Supervisory District 26
 - Supervisory District 27
 - Supervisory District 28
 - Supervisory District 29
 - Supervisory District 3
 - Supervisory District 30
 - Supervisory District 31
 - Supervisory District 4
 - Supervisory District 5
 - Supervisory District 6
 - Supervisory District 7
 - Supervisory District 8
 - Supervisory District 9

