

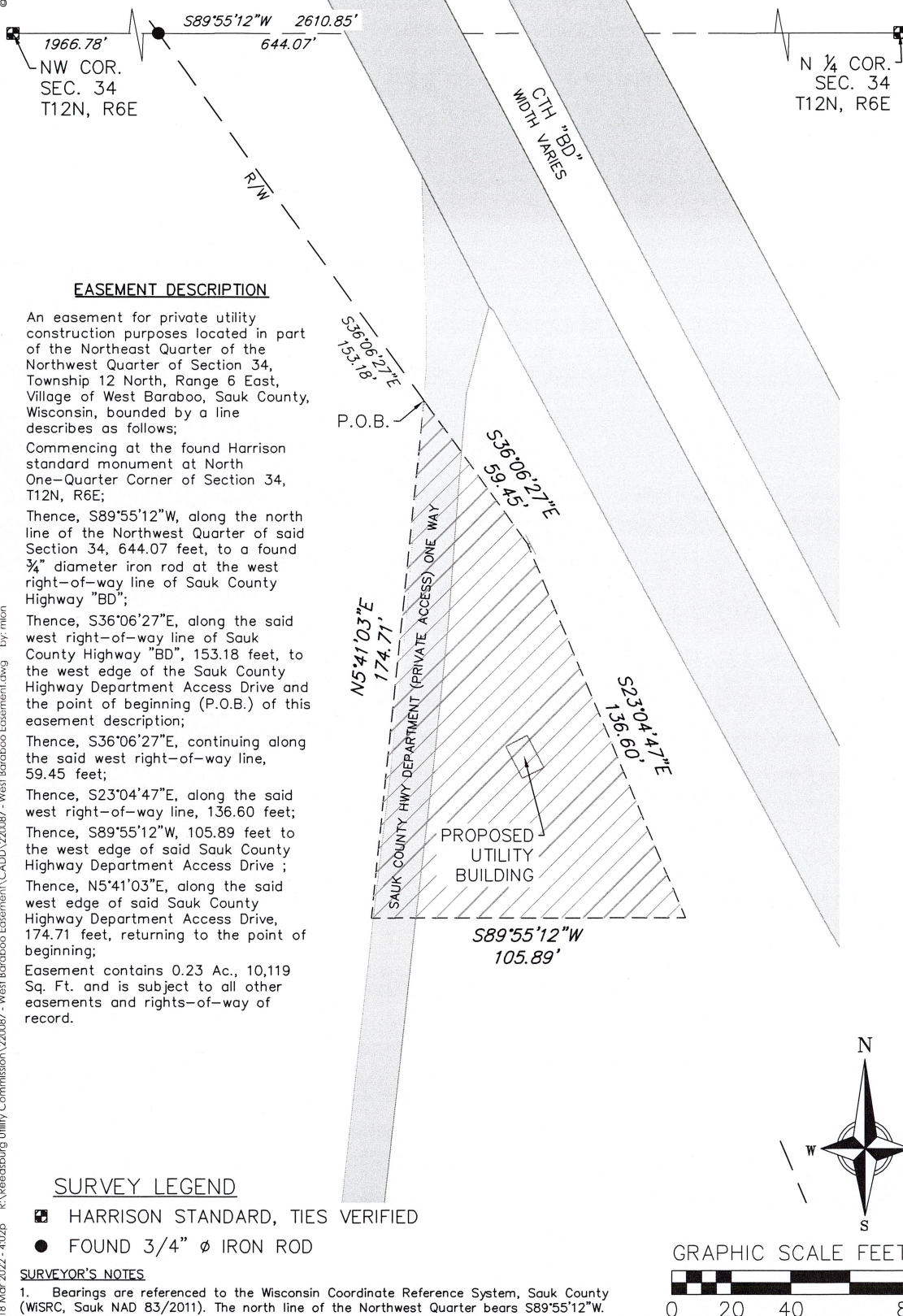
EXHIBIT A

EASEMENT EXHIBIT

Located in part of the Northeast Quarter of the Northwest Quarter of Section 34,
Township 12 North, Range 6 East, Village of West Baraboo, Sauk County Wisconsin

© 2019 Vierbicher Associates, Inc.

R:\Reedsburg Utility Commission\220087 - West Baraboo Easement\220087 - West Baraboo Easement.dwg by: mlon 18 Mar 2022 - 4:02p



vierbicher
planners | engineers | advisors



Phone: (800) 261-3898

REVISIONS	SCALE	1" = 40'	SHEET
	CHECKED	sdis	
	DRAFTER	mlon	
	FILE	220087E	
JOB NO.	DATE	3/17/2022	
220087			1 OF 1