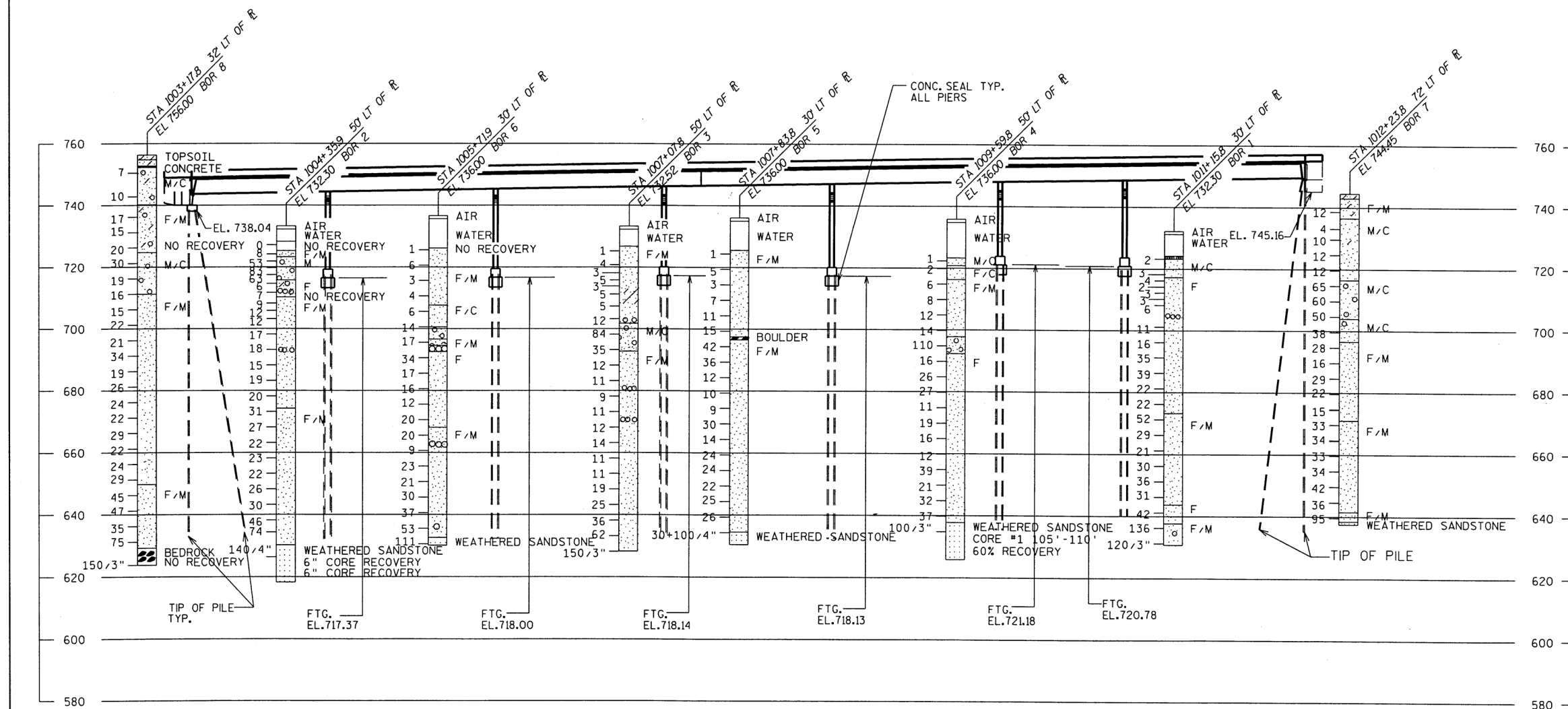
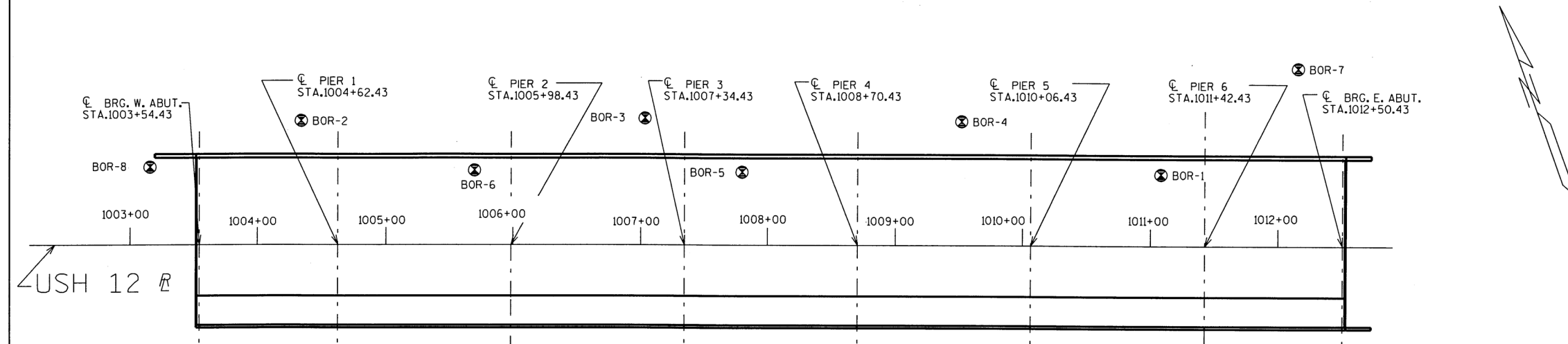


USH 12 OVER WISCONSIN RIVER
MIDDLETON TO SAUK CITY, SAUK COUNTY



STATE PROJECT NUMBER	SHEET NO.
5300-03-75	8.5

ABBREVIATIONS
 F—Fine M—Medium C—Coarse
 Ws—Weathered So—Sound

MATERIAL SYMBOLS
 Topsoil Silt Sandstone
 Sand Peat Limestone
 Gravel Clay Igneous Rock

LEGEND OF PROBING
 Probing No. Sta. Elevation
 95/6=95 Blows for 6' Penetration
 Probing taken with a 350# Wt. Falling 18" on a 2" O.D. Point. 7 Average Blows Per Foot Refusal 95/6

LEGEND OF BORING
 Elev. Boring No. Sta.
 Unconfined Strength Tons/Ft² → 7.7 *
 Blows Per Ft. Using 140# Wt. Falling 30"
 Wash Sample
 Shelby Tube—S.T.
 Ground Water Elevation
 No Ground Water Observed Above This Elevation
 Sandy Gravel
 Boulders or Cobbles
 Sand
 Silty Clay
 So
 Limestone

Unless otherwise specified, the blows per foot at the locations indicated are based on driving a 2" O.D. x 1.4" I.D. split spoon sampler with a 140# hammer having a free fall of 30". The blow count is taken in undisturbed soil immediately below a cased or open hole eliminating side friction on the drive pipe.

SUBSURFACE EXPLORATION FOR FOUNDATION DESIGN AND BIDDERS INFORMATION
 To obtain relative data concerning the character of material in and upon which the foundation might be built, borings and/or soundings were made at points approximately as indicated on this drawing. The data presented herein represents the findings of the subsurface explorations made. However, because the depths investigated are limited and the area of the borings and/or soundings is very small in relation to the entire area, the Division of Highways does not warrant conditions below the depths investigated or that the classification of material encountered in these investigations is necessarily typical of the entire site.

NO.	DATE	REVISION	BY
STATE OF WISCONSIN DEPARTMENT OF TRANSPORTATION DIVISION OF HIGHWAYS			
STRUCTURE B-56-217			
CONST. SPEC.	1989	DRAWN BY CRJ	PLANS CK'D. RJ
SUBSURFACE EXPLORATION		SHEET 5	

FILE= 217SOIL.S.DGN
SCALE = 24