

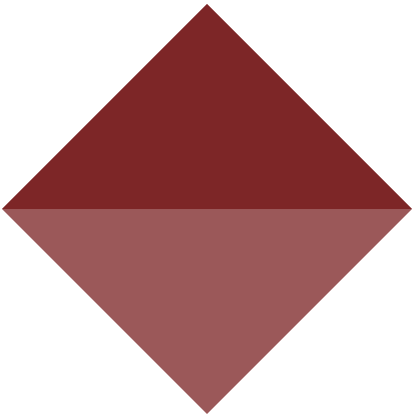


ADA FACILITY AUDIT OF PARKS AND RECREATION FACILITIES

LAND RESOURCES AND ENVIRONMENT DEPARTMENT
SAUK COUNTY, WISCONSIN

ADOPTED | FEBRUARY 15, 2022





ADA FACILITY AUDIT AND TRANSITION PLAN

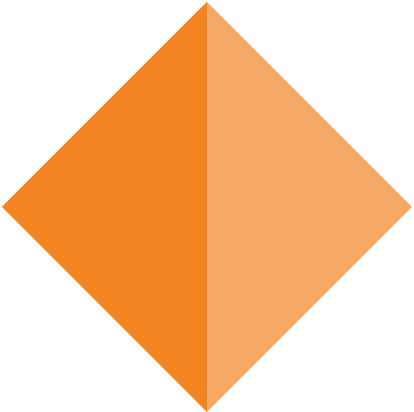
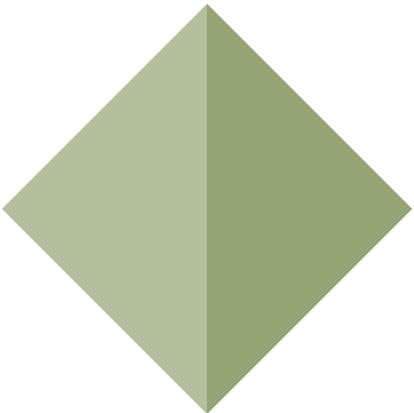
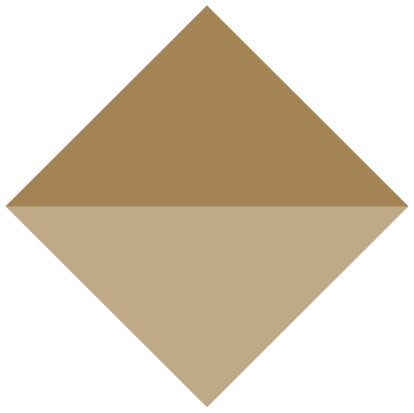


TABLE OF CONTENTS



SECTION 1	1
Introduction	
SECTION 2	5
Evaluation	
SECTION 3	11
Transition Plan	
APPENDIX	23
A - Full Audit Summaries	
B - ADA Coordinator Contact	
C - Public Outreach	
D - Grievance Procedure and Request for Accommodation	
E - Resolution to Adopt	



Prepared By:



1702 Pankratz Street
Madison, Wisconsin 53704
(608) 242-7779
www.msa-ps.com

Prepared for:

Sauk County Land Resources and Environment Department
West Square Building, Rm 248
505 Broadway
Baraboo, WI 53913
<https://www.co.sauk.wi.us/cpz/land-resources-and-environment>

SECTION I - INTRODUCTION



SECTION I - INTRODUCTION

NEED AND PURPOSE

The Americans with Disabilities Act (ADA) of 1990 is a Civil Rights statute (Law), enforced through the judicial system. This law prohibits discrimination against people who have disabilities. Title II of the Act specifically addresses making public services accessible to those with disabilities and applies to municipalities. Title II requires physical accessibility assessments of all existing facilities to determine whether there are elements that create physical barriers to individuals with disabilities. In 2010, new replacement ADA standards were issued and became effective March 15, 2012. These new standards expanded to include recreational assets; playgrounds, play areas, athletic fields, sports courts, and more.

This document has been created for the Sauk County Land Resources and Environment Department (SCRELD) to specifically cover accessibility within Sauk County Park Facilities and does not include information on County rights-of-way, programs, practices, or building facilities not related to Park Facilities. In 2021, SCLRED hired MSA Professional Services to assist with the evaluation of 14 public park properties within Sauk County, identified in Table 1 - Section II. Other facilities and spaces owned or operated by SCLRED are not included in this report. Section II of this report summarizes accessibility deficiencies observed at each of the sites and facilities audited. Refer to Section III of the report for additional information on the County's approach and the timeline for corrective measures, commonly referred to as the Transition Plan.

ADA AND ITS RELATIONSHIP TO OTHER LAWS

Title II of ADA is companion legislation to two previous federal statutes and regulations: the Architectural Barriers Acts of 1968 and Section 504 of the Rehabilitation Act of 1973.

The Architectural Barriers Act of 1968 is a Federal law that requires facilities designed, built, altered or leased with Federal funds to be accessible. The Architectural Barriers Act marks one of the first efforts to ensure access to the built environment.

Section 504 of the Rehabilitation Act of 1973 is a Federal law that protects qualified individuals from discrimination based on their disability. The nondiscrimination requirements of the law apply to employers and organizations that receive financial assistance from any Federal department or agency. Title II of ADA extended this coverage to all state and local government entities, regardless of whether they receive federal funding or not.



AGENCY REQUIREMENTS

Under Title II, the Sauk County Land Resources and Environment Department must meet these general requirements:

- Must operate their programs so that, when viewed in their entirety, the programs are accessible to and usable by individuals with disabilities (28 C.F.R. Sec. 35.150).
- May not refuse to allow a person with a disability to participate in a service, program, or activity simply because the person has a disability (28 C.F.R. Sec. 35.130 (a)).
- Must make reasonable modifications in policies, practices, and procedures that deny equal access to individuals with disabilities unless a fundamental alteration in the program would result (28 C.F.R. Sec. 35.130(b) (7)).
- May not provide services or benefits to individuals with disabilities through programs that are separate or different unless the separate or different measures are necessary to ensure that benefits and services are equally effective (28 C.F.R. Sec. 35.130(b)(iv) & (d)).
- Must take appropriate steps to ensure that communications with applicants, participants and members of the public with disabilities are as effective as communications with others (29 C.F.R. Sec. 35.160(a)).
- Must designate at least one responsible employee to coordinate ADA compliance [28 CFR Sec. 35.107(a)]. This person is often referred to as the “ADA Coordinator.” The public entity must provide the ADA coordinator’s name, office address, and telephone number to all interested individuals [28 CFR Sec. 35.107(a)].
- Must provide notice of ADA requirements. All public entities, regardless of size, must provide information about the rights and protections of Title II to applicants, participants, beneficiaries, employees, and other interested persons [28 CFR Sec. 35,106]. The notice must include the identification of the employee serving as the ADA coordinator and must provide this information on an ongoing basis [28 CFR Sec. 104.8(a)].
- Must establish a grievance procedure. Public entities must adopt and publish grievance procedures providing for prompt and equitable resolution of complaints [28 CFR Sec. 35.107(b)]. This requirement provides for a timely resolution of all problems or conflicts related to ADA compliance before they escalate to litigation and/or the federal complaint process.

SECTION II - EVALUATION



SECTION II - EVALUATION

METHODOLOGY

In August of 2021, MSA conducted accessibility audits for the 14 Sauk County managed parks. The team developed audit reports for each park (refer to the Appendix A), that included the following information:

- Cover page, featuring:
- Aerial photo of the building or park facility.
- Name of the building or park.
- Floor Plan (if applicable).
- Photos and description of deficiencies as identified from audits.

To complete the audits of recreational facilities, MSA referenced several existing checklist templates produced by the New England ADA Center, an Institute for Human Centered Design project, and a member of the ADA National Network. The checklists are based on the 2010 ADA Standards for Accessible Design, the Accessibility Guidelines of the Americans with Disabilities Act (ADAAG).

For audits of buildings and structures, MSA follows the American National Standard for Accessible and Usable Buildings and Facilities (ANSI A117.1). These standards are almost identical to the Americans with Disability Act Accessibility Guide (ADAAG). The primary difference between the two is that ADAAG is part of the overall ADA, which is federal civil rights legislation, while ANSI A117.1 is the accessibility standard adopted by the state of Wisconsin under the Wisconsin State Building Code and it is understood that this standard achieves ADA compliance.

This study does not include a review of the requirements for alarms (beyond fire alarms), telecommunications, websites, 911 communications, programs, services, employment, or transportation issues of ADA. This study reviewed all portions of the buildings and grounds listed, including public areas, and service areas.



Douglas Landing



Great Sauk State Trail - Sign Kiosk



Hemlock County Park - Parking Lot



ADA Title II requires that all public programs be accessible and should not necessarily be construed to mean all portions of all public facilities. The extent of modifications required for all non-compliant items listed is contingent on the use of the area or room as part of a public program offered by Sauk County Land Resources and Environment Department (SCLRED). The burden of judgment and distinction of public areas from employment areas is the responsibility of County officials.

It is important to note that just because there is a physical barrier does not necessarily indicate program accessibility under the law. Program accessibility requires that each service, program or activity be operated “so that the service, program, or activity, when viewed in its entirety, is readily accessible to and usable by individuals with disabilities” 28 CFR 35.150(a), subject to the financial and administrative burdens and fundamental alterations defenses provided in 28 CFR 35.150. SCLRED is responsible for using this data and determine Program accessibility.

Program modifications or relocation may be implemented to resolve a physical barrier and is probably the most cost-effective way of addressing some non-compliant items. Section III, Table 1 (Transition Plan) includes the cost for items in public portions of the facilities. It should be noted for non-public areas that ADA (Title I) does have requirements for the employment portions of publicly owned facilities as well, and those associated requirements should be reviewed with Sauk County’s legal counsel.

Overall, this study is not considered the conclusion of SCLRED’s assessment of compliance with the Americans with Disabilities Act, but as a catalyst to its eventual full interpretation and ultimate implementation of required corrective measures. Further, please note the information contained in this report is not legal advice; consult Legal Counsel with any specific legal questions in regards to SCLRED’s obligations for compliance.



Man Mound County Park - Monument Sign



White Mound County Park - Pit Toilet at White Mound Lake Boat Launch




SECTION II - EVALUATION

SUMMARY OF EXISTING FACILITIES

Table 1

Sauk County Park and Recreation Facilities
Table : Existing Facility Summary

Map Book Page	Park Name	Park Address	Acreage	Swimming Beach	Ice Skating / Hockey	Picnic Area	Benches/Viewing Areas	Play Equipment	Monument/Historic Site	Camp Sites	Sledding	Fishing Area	Fishing Pier	Boat Launch	Canoe/Kayak Launch	River / Lake Access	Pedestrian Trail	Multi-Use Trail	Mtn. Bike / BMX Trail	Event Area	Permentant Restrooms	Portable Restroom	Shower	Standalone Drinking Water	Office/Other Building	Park Shelter	Automobile Parking
1	White Mound County Park	S7995 White Mound Drive, Hillpoint	1100																								
2	Hemlock County Park	E3601 N Dutch Hollow Road, LaValle	73																								
3	Timme Mill	S3940 S Burritt Ave, Lake Delton	0.65																								
4	Weidman Woods	S443 Town Hall Road, Reedsburg	80	No Improvements																							
5	County Forest	S12604 Porter Road, Spring Green	677	No Improvements																							
6	County Farm	S4555 County Road CH, Reedsburg	565	No Improvements																							
7	Lake Redstone County Park	S4522 Douglas Road, LaValle	30																								
8	North End Boat Landing	S4765 LaValle Road, LaValle	1.18																								
9	Summer Oaks Boat Landing	E12614 Kilpatrick Point Drive, Merrimac	3																								
10	Douglas Landing	E4603 Douglas Road, LaValle	0.75																								
11	Yellow Thunder Memorial	S2653 County Road A, Baraboo	0.51																								
12	Man Mound National Historic Monument	E13085 Man Mound Road, Baraboo	1.78																								
13	Bluffview Park			No Improvements																							
14	Great Sauk State Trail		N/A																								

 Denotes Historic Sites - Ability of County to make alterations to the site for accessibility may be limited by protection under Local, State or Federal Law.



White Mound County Park - Prairie Smoke Terrace and Beach



SUMMARY OF FINDINGS

Table 2 provides a broad overview of the results of the accessibility audit for each park. Major audit categories include; Approach & Entry, Play Areas, Site Features, and Shelters and Restrooms are differentiated and further broken down into minor audit categories. The compliance assessment summary for each minor audit category are as follows

- ND = No Observed Deficiency
- LD = Low-Level Deficiency (few, minor, easily correctable deficiencies exist)
- HD = High-Level Deficiency (many, major, or difficulty in correcting deficiencies exist)
- NE = Not Present (feature did not exist at the park or facility)

The LD and HD categorization are subjective in nature but based on professional opinion. As an example, a restroom with an exterior door that shuts too quickly is a low-level deficiency, as adjustments to the door closing mechanism require minimal effort or cost to the SCLRED to achieve compliance. However, a restroom that lacks sufficient stall width is a high-level deficiency as remodeling interior spaces would be required to bring the restroom into compliance.

The purpose of the matrix is not to detail the extent of particular deficiencies but to provide, at a glance, a summary of how all the parks meet accessibility requirements. The summary matrix may be most beneficial in the development of the Transition Plan. For example, the SCLRED may focus future corrective actions to particular parks where only a few or low-level deficiencies exist.

NOTE: All results are based on conditions observed at the time of audit. New deficiencies could have arisen after the completion of an audit. Additionally, deficiencies may have been corrected before the release of this study.

EXAMPLES OF DEFICIENCY CATEGORIES



No Observed Deficiency
Proper companion area provided.



Low-Level Deficiency
Raise signage to proper height.



High-Level Deficiency
Add accessible route (on steep slope) and modify entrance threshold.



SECTION II - EVALUATION

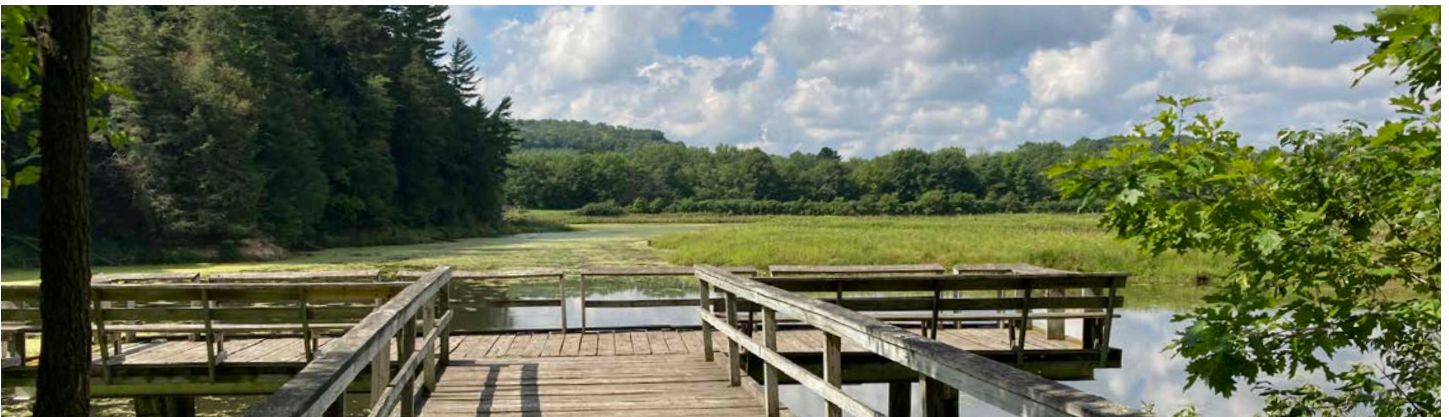
AUDIT DEFICIENCY CHECKLIST

Table 2

Sauk County Park and Recreation Facilities
Table : Access Audit Matrix Summary

Audit Deficiency Checklist:			Approach & Entry		Play Areas			Site Features				Restrooms and Shelters		Summary				
Map #	Facility Name	Address	Parking	Exterior Route	Accessible Route	Play Equipment	Ground Surfaces	Accessible Route	Site Furnishings (Tables, Monuments, Benches, etc.)	Drinking Fountains	Swimming Area	Boat Launch/Docks	Fishing Pier	Shelter	Restroom	Total ND	Total LD	Total HD
Parks																		
1	White Mound County Park	S7995 White Mound Drive, Hillpoint	LD	LD	HD	HD	HD	LD	LD	HD	LD	LD	LD	HD	HD	0	7	6
2	Hemlock County Park	E3601 N Dutch Hollow Road, LaValle	LD	LD	NE	NE	NE	LD	LD	NE	NE	NE	HD	NE	LD	0	5	1
3	Timme Mill	S3940 S Burrirt Ave, Lake Delton	HD	LD	NE	NE	NE	HD	NE	NE	NE	HD	LD	NE	NE	0	2	3
4	Weidman Woods	S443 Town Hall Road, Reedsburg	No Auditable Features													0	0	0
5	County Forest	S12604 Porter Road, Spring Green	No Auditable Features													0	0	0
6	County Farm	S4555 County Road CH, Reedsburg	No Auditable Features													0	0	0
7	Lake Redstone County Park	S4522 Douglas Road, LaValle	LD	HD	HD	HD	HD	HD	HD	NE	NE	LD	NE	NE	HD	0	2	7
8	North End Boat Landing	S4765 LaValle Road, LaValle	LD	LD	NE	NE	NE	LD	NE	NE	NE	LD	LD	NE	NE	0	5	0
9	Summer Oaks Boat Landing	E12614 Kilpatrick Point Drive, Merrimac	LD	HD	NE	NE	NE	NE	NE	NE	NE	LD	NE	NE	LD	0	3	1
10	Douglas Landing	E4603 Douglas Road, LaValle	LD	LD	NE	NE	NE	NE	LD	NE	NE	NE	NE	NE	NE	0	3	0
11	Yellow Thunder Memorial	S2653 County Road A, Baraboo	LD	LD	NE	NE	NE	LD	LD	NE	NE	NE	NE	NE	NE	0	4	0
12	Man Mound National Historic Monument	E13085 Man Mound Road, Baraboo	LD	LD	NE	NE	NE	LD	LD	NE	NE	NE	NE	NE	NE	0	4	0
13	Bluffview Park	(No Address)	No Auditable Features													0	0	0
14	Great Sauk State Trail	(No Address)	NE	ND	NE	NE	NE	LD	HD	NE	NE	NE	NE	NE	NE	1	1	1

Key		
ND	No Deficiency	No observed deficiency.
LD	Low level Deficiency	Few, minor, easily correctable deficiencies (ex. ADA Parking sign is missing or hung incorrectly)
HD	High level Deficiency	Many, major, or difficulty in correcting deficiencies (ex. Inaccessible play structure)
NE	Non Present (and Not Required)	Feature doesn't exist (ex. Play structure, parking lot etc...)



Hemlock County Park - Fishing Pier

SECTION III - TRANSITION PLAN



SECTION III - TRANSITION PLAN

OVERVIEW

The audit of Sauk County Land Resources and Environment Department's (SCLRED) Park and Recreation facilities has identified conditions or components that form accessibility barriers. The Americans with Disabilities Act ("ADA") requires consideration by the Land Resources and Environment Department to address the identified barriers and bring the SCLRED Programs, Policies, and Services into compliance.

With the facility assessment completed, the next step is to prioritize the recommended upgrades. The overall results, if aggregated, indicate the cost of the upgrades and repairs that will be required to bring all of the facilities into compliance. Funding for all of the upgrades may not be currently available. Thus, this Transition Plan document has been compiled to provide a priority structure for addressing needs in the system with the County's available funding and resources, as a phased approach.

The ADA, Title II, subsection 35.150, requires transition plans to be developed for local governments with 50 or more employees. The required transition plan is a planning document that denotes priorities, responsible parties, and timelines for ADA compliance in all public facilities. While not required, it is also best practice to identify cost estimates for each correct measure.

The County's Transition Plan includes the following components:

1. An overview of the Land Resources and Environment Department's priority strategies for implementing corrective measures.
2. Contact information for the staff member designated as the ADA Coordinator and a summary of grievance procedures.
3. A table identifying deficiencies by park, including the recommended corrective action, cost estimates, target year for completion, and place to document an actual year of completion.

This Transition Plan is a guiding document intended to be continuously reviewed and updated by SCLRED staff as corrective measures are implemented or new priorities emerge. The SCLRED may identify the need to change the priority of items, convert temporary solutions to permanent, or modify approach to improvements based on budget and staff time.

DETERMINING PRIORITIES FOR CORRECTIVE MEASURES

The following section describes the SCLRED's strategy for developing priorities for corrective measures for existing park and recreation facilities that do not meet the 2010 Accessibility Standards. When constructing new facilities, the 2010 Accessibility Standards (or most current edition) must be followed in design and construction. When altering or improving existing facilities, the SCLRED must ensure that the part altered or improved complies with the 2010 Accessibility Standards. Those remaining deficient building or park facilities should be brought into compliance over time according to the priorities outlined below and within the Department's reasonable ability to budget for improvements.



In determining how many facilities of a multi-site program require modifications to meet accessibility guidelines, further consideration may be applied taking into account the regional usage and unique amenity mix. In order to address the parks and amenities with the highest usage or singular amenity offering this approach will logically focus on the improvements to make the program readily accessible to and usable by individuals with disabilities accounting for such factors as:

- Size of the public entity
- Number of sites
- Particular program features offered at each site
- Geographical distance between sites
- Travel time to the sites
- Availability of public or alternative transportation to the sites
- Availability of accessible pedestrian routes to the playgrounds
- Comparable amenities and services in and surrounding the play areas
- Size of the playgrounds
- And sufficient variety of accessible play components

The SCLRED's timeline includes provisions for addressing corrective measures for deficiencies based on the availability of County resources and some of the following factors:

- A. Maintenance.** ADA deficiencies that exist due to maintenance issues, such as trash receptacles placed on an otherwise accessible path creating a barrier to access, should be immediately addressed. Other deficiencies that can be addressed by Sauk County Staff and at a relatively low cost, for example, installing grab bars in park restrooms or adjusting signage, are also considered a higher priority for scheduling corrective measures than those items that, intuitively, are more expensive to correct, such as improvements that would require structural changes to existing restroom facilities.
- B. Accessible Routes.** After maintenance issues (i.e. low hanging fruit), SCLRED's second priority is to address parking and route of access deficiencies. The County recognizes that an otherwise accessible feature such as a piece of playground equipment is inaccessible if the access to the play equipment does not meet accessibility standards.
- C. Regional Impact.** The SCLRED's larger multi-use facilities, such as White Mound County Park or Lake Redstone County Park are more used for group, community, and family functions than single use facilities, such as the Summer Oaks Boat Launch. Corrective measures at smaller or single-use areas are less likely to affect the greatest number of potential users unless adjacent land uses create a higher than expected demand. Context around and programmed use of each facility may create a higher demand for accessible park facilities than for parks that lack similar uses. In addition, it is the SCLRED's objective to focus corrective measures across the County so that accessible park elements are dispersed equitably across the County, rather than concentrated in one region of the County.
- D. Major Infrastructure Replacement.** The County's fourth priority is to address deficiencies when major infrastructure needs to be renovated or replaced. The County has numerous park shelters, restrooms, playgrounds, and parking lots that have replacements scheduled as part of existing or upcoming Master Planning efforts. The associated deficiencies will be addressed when they are replaced.



SECTION III - TRANSITION PLAN

The SCLRED or County Board should not view the factors and priorities identified on the previous page as a limit on the Department's ability to take corrective actions as deemed necessary at any time. For example, the Department may consider adjustments to the scheduling of corrective measures, which would have the effect of falling outside the priority parameters above, if there is reasonable cause to do so, such as a new documented need or request for corrective measures brought to the County's attention.

In addition, ADA CFR Section 35.150 makes it clear that not necessarily every facility or site of the same type must be made accessible. For example, not every existing shelter within the County's parks needs to be accessible, and the County may provide for the delivery of services at alternate accessible sites. However, when only some of the facilities are accessible, the County will strive to maintain scheduling policies for their use to accommodate requests for accessible shelters, boating facilities, play areas, or restrooms (if provided).

In addition, ADA CFR Section 35.150 does not require the County to take any action that would threaten or destroy the historical significance of a historic property or require the County to take any action that it can demonstrate would result in a fundamental alteration in the nature of a service, program, or activity: or in undue financial and administrative burden: or result in a direct threat to the health or safety of others. If an action would result in such an alteration, burden, or safety issue, the Department may take any other action that would not result in such an alteration, burdens, or safety issue but would ensure that individuals with disabilities receive the benefits or services provided by Sauk County.

ADA COORDINATOR

Title II of the ADA requires that one staff member be designated as ADA Coordinator. This person is responsible for receiving, review, and response to questions and concerns expressed by anyone who has a concern with disability-related access within the Sauk County park facilities. The Building Facilities Director the designated ADA Coordinator for Sauk County and SCLRED.

The ADA Coordinator shall refer ADA grievances to the County Board for review and recommendation in instances where an initial staff response does not resolve the grievance. Oversight for accessibility deficiency assessments, correct measures, and updates to the Transition Plan Timeline for County facilities is the responsibility of the County's ADA Coordinator.

GRIEVANCE PROCEDURE

In accordance with 28 CFR 35.107(b), SCLRED has developed a grievance procedure for the purpose of the prompt and equitable resolution of citizens' complaints, concerns, comments, and other grievances. This grievance procedure is outlined in Appendix D.

A complaint regarding accessibility of the County's facilities and services should be in writing and contain information about the alleged discrimination such as the name of the complainant, address of the complainant, phone number of complainant, the location, date, and a description of the issue. Sauk County's form for submittal of complaints can be found in the Appendix D. Alternative means of filing complaints, such as personal interviews or a recording of the complaint, will be made available for persons with disabilities upon request to the ADA Coordinator.



TRANSITION PLAN TIMELINE

Table 2 on the following pages summarizes the observed deficiencies at each of the Land Resources and Environment Department's 14 current park facilities. The information, sorted by facility name, includes a summary of the observed deficiency, target year, date of corrective measures, estimated cost, and space for tracking costs if the County desires. Each individual park audit contains a summary with description, photos of deficiencies, and potential recommendations for corrective measures (refer to Section III).

The target for completion has been identified either as a specific year range for larger capital projects or 'TBD' if that determination is yet to be determined. The County has or will identify a timeframe within which to implement corrective measures. Following completion of the audit reports, Sauk County identified those deficiencies that could be reasonably addressed based on the priorities discussed in this plan and existing/anticipated County resources. While it is the County's intention to undertake most projects identified with a target completion of 2030, the County recognizes that other factors, including budgetary constraints, may not allow for the completion of all projects within the recommended timeframe.

Estimated costs have been developed for those actions which are likely to require contracted services for design and construction (e.g. new accessibility routes or restroom replacement), and limited to those corrective measures anticipated to occur within the next 10 years. The costs provided are preliminary construction estimates that were made before design or engineering considerations. The County recognizes that providing cost estimates beyond this timeframe is speculative and unpredictable and because it is the intent of the SCLRED to continually update the transition plan timeline.

Prioritization of Corrections and Improvements	
Priority	Proposed Timeframe
1*	1 - 2 years
2	3 - 4 years
3	5 - 6 years
4	7 - 8 years
5	9 - 10 years

* - The County will provide signage directing users to accessible features until existing features are otherwise modified as part of a long-term solution.

As previously stated, this transition plan is a guiding document. As such, the transition plan timeline is intended to be amended from time to time by the SCLRED and used as a tool for assisting with the completion of annual County/Department budgeting.

The SCLRED's Access Audit of Park and Recreation Facilities, including Section I, II, and III shall be kept on file with the County and available for public inspection and comment. Comments regarding the transition plan shall be submitted to the ADA Coordinator.



SECTION III - TRANSITION PLAN

SECTION III - TRANSITION PLAN



Item Number	Name of Park	Facility Name	Facility Type	Feature Type	Observed Deficiency	Code	Measurement	Notes	Solution	Cost	Alternate Solution	Priority	Timeframe for Completion
1	North End Boat Landing		Boat Launch	Automobile Parking	Accessible parking improperly marked	208, 502.2-3	9'-9" Stall	No marked access aisle. (11ft stall and 5ft access aisle preferred).	Add access aisle to proper side.	\$250.00	N/A	1	1-2 Years
2	North End Boat Landing		Boat Launch	Automobile Parking	Accessible parking missing or improperly located	208.2-3		No boat trailer stall marked. (11ft stall and 5ft access aisle preferred).	Modify pavement marking.	\$250.00	N/A	1	1-2 Years
3	North End Boat Landing		Boat Launch	Fishing Pier	Accessible route has lips that exceed 1/4-inch	206, 302	1"	Raised asphalt and bowed deck board	Modify or replace route.	\$500.00	N/A	2	3-4 Years
4	North End Boat Landing		Boat Launch	Boat Launch	Accessible route missing	206.2.1	~20'	No route to courtesy pier.	Add accessible route.	\$1,000.00	Add signage identifying alternative accessible feature.	1	1-2 Years
5	North End Boat Landing		Boat Launch	Boat Launch	Accessible route is not firm, stable, and slip-resistant	206, 302.1		Grass in pavement at Pay station off parking lot.	Maintenance - Clear vegetation from route.	Maintenance	Relocate features to an accessible route.	2	3-4 Years
6	North End Boat Landing		Boat Launch	Boat Launch	Accessible route has gaps that exceed 1/2-inch	206, 302.3		Lip at gangway entrance. Regrade or modify the transition plate.	Modify or replace route.	\$500.00	N/A	1	1-2 Years
7	North End Boat Landing		Boat Launch	Boat Launch	Accessible route has lips that exceed 1/4-inch	206, 302	1"	Adjust panels to align pier or add transition plate.	Modify or replace route.	\$500.00	N/A	1	1-2 Years
8	North End Boat Landing		Boat Launch	Boat Launch	Accessible route cross-slope exceeds 1:48 (2 percent)	206, 502.4	3.05%	Adjust pier to be level.	Modify or replace route.	Maintenance	N/A	1	1-2 Years
1	Douglas Landing		Wildlife Viewing	Benches / Viewing Areas	Accessible route missing	206.2.1	~130'	Existing gravel roadbed is covered with grass. Property in the floodplain. Gravel or paved route to at least one bench/table is recommended.	Add accessible route.	\$5,000.00	Add signage identifying alternative accessible feature.	1	1-2 Years
2	Douglas Landing		Wildlife Viewing	Automobile Parking	Accessible parking missing or improperly located	208.2-3		Gravel lot, no stalls marked. Pave and mark accessible stall.	Add accessible space and sign properly.	\$3,000.00	Maintain gravel parking, add painted wheel stop and appropriate signage.	2	3-4 Years
1	Lake Redstone County Park		Playground	Play Equipment	Accessible route missing	206.2.1	~250'	Add accessible route to transfer platform and swing bay. Connect from west side of parking lot. Add or remark accessible parking stall.	Add accessible route.	\$6,500.00	N/A	5	9-10 Years
2	Lake Redstone County Park		Picnic Area	Picnic Area	Accessible route missing	206.2.1		Add route or move table(s) and grill.	Add accessible route.	\$3,500.00	Relocate features to an accessible route.	5	9-10 Years
3	Lake Redstone County Park		Playground	Automobile Parking	Accessible parking missing or improperly located	208.2-3		Add sign and proper pavement markings.	Add accessible parking stall.	\$1,200.00	N/A	1	1-2 Years
4	Lake Redstone County Park		Playground	Play Equipment	Playground does not have proper ratio of elevated play to ground play components	206, 240, 1008		N/A	Add ground play elements.	\$5,000.00	N/A	5	9-10 Years
5	Lake Redstone County Park		Swimming Area	Other Feature	Accessible route missing	206.2.1		Route doesn't extend to pay station. Maximum forward reach 10" beyond edge of pavement or obstruction.	Modify or replace route.	\$250.00	Add signage identifying alternative accessible feature.	2	3-4 Years
6	Lake Redstone County Park		Picnic Area	Picnic Area	Other	1011.2.1, 1011.4, 306		Tables are not accessible type	Add route and modify or replace picnic table with one of an accessible type.	\$1,500.00	N/A	1	1-2 Years
7	Lake Redstone County Park		Picnic Area	Picnic Area	Accessible route missing	206.2.1		Grill is not accessible type.	Replace with accessible type.	\$500.00	N/A	5	9-10 Years
8	Lake Redstone County Park		Playground	Play Equipment	Accessible route has lips that exceed 1/4-inch	206, 302	> 1"	Replace edging at access point.	Modify transition or threshold (< 1/4" lip).	\$250.00	N/A	5	9-10 Years
9	Lake Redstone County Park		Playground	Play Equipment	Playground does not have a proper transfer system	206, 240, 1008	20"	Surfacing exceeds maximum transfer platform height. Add additional surfacing or replace transfer platform.	Modify playground surfacing at transfer element.	Maintenance	N/A	5	9-10 Years
10	Lake Redstone County Park		Swimming Area	Swimming Beach	Accessible route missing	206.2.1	~250'	No accessible route to beach. Dam extends to edge of beach. Route from parking needs to be addressed first.	Add accessible route.	\$60,000.00	Add signage identifying alternative accessible feature.	5	9-10 Years
11	Lake Redstone County Park		Swimming Area	Automobile Parking	Accessible parking missing or improperly located	208.2-3		N/A	Add accessible space and sign properly.	\$1,200.00	Add signage identifying alternative accessible feature.	1	1-2 Years
B1.1	Lake Redstone County Park	Pit Toilet Building - ADA	Playground	Permanent Restrooms	Entry	404		Exterior approach walk at door is irregular, too small and has vertical transition to floor greater than 1/4" at some points.	Add new insulated (minimum 48"x48") concrete floating slab with maximum 1/50 slope. Connected to an accessible site route.	\$3,000.00	N/A	4	7-8 Years
B1.2	Lake Redstone County Park	Pit Toilet Building - ADA	Playground	Permanent Restrooms	Signage	703		Wall mounted accessible room sign at entry door is missing.	Add ADA room sign.	\$200.00	N/A	1	1-2 Years
B1.3	Lake Redstone County Park	Pit Toilet Building - ADA	Playground	Permanent Restrooms	Entry	404		Door lever handle is not functioning and door does not easily close.	Replace door handle and adjust door.	\$500.00	N/A	2	3-4 Years
B1.4	Lake Redstone County Park	Pit Toilet Building - ADA	Playground	Permanent Restrooms	Restroom	212, 213, 601-610		The vertical toilet grab bar (under ANSI 117.1) is not provided. This is not required under ADA. Thus this is optional for existing condition. The vertical grab bar is helpful for some individuals.	Optional: Add grab bar.	\$300.00	N/A	4	7-8 Years
B2.1	Lake Redstone County Park	Toilet/Changing Buildings - Mens/Womens	Picnic Area	Permanent Restrooms	Restroom	212, 213, 601-610		Building is not accessible, but nearby West Pit Toilet Building is.	Add signage directing users to nearest accessible facility.	\$300.00	N/A	5	9-10 Years
B2.2	Lake Redstone County Park	Toilet/Changing Buildings - Mens/Womens	Picnic Area	Permanent Restrooms	Restroom	212, 213, 601-610		Changing bench is not accessible, and this building is not on an accessible route.	Construct or remodel to create an accessible changing room OR consider removing the deteriorated changing areas all together.	TBD	Add signage identifying alternative accessible feature.	5	9-10 Years
B2.3	Lake Redstone County Park	Toilet/Changing Buildings - Mens/Womens	Picnic Area	Permanent Restrooms	Signage	703		Wall mounted accessible room signs at entry door is missing.	Add ADA room sign.	\$300.00	N/A	1	1-2 Years



SECTION III - TRANSITION PLAN

Item Number	Name of Park	Facility Name	Facility Type	Feature Type	Observed Deficiency	Code	Measurement	Notes	Solution	Cost	Alternate Solution	Priority	Timeframe for Completion
1	Hemlock County Park		Picnic Area	Picnic Area	Accessible route missing	206.2.1		No route to grill or picnic tables. Picnic tables and grill or not accessible type. County is considering removing tables until master plan is complete.	Add route and modify or replace picnic table with one of an accessible type.	\$6,000.00	N/A	3	5-6 Years
2	Hemlock County Park		Boat Launch	Automobile Parking	Accessible parking missing or improperly located	208.2-3		No marked stalls in lot. Mark and add appropriate signage.	Add accessible parking stall.	\$1,200.00	N/A	1	1-2 Years
3	Hemlock County Park		Picnic Area	Picnic Area	Accessible route missing	206.2.1		No route to tables. Tables are not accessible type.	Add route and modify or replace picnic table with one of an accessible type.	\$1,000.00	N/A	3	5-6 Years
4	Hemlock County Park		Fishing	Fishing Pier	Accessible route has lips that exceed 1/4-inch	206, 302		Lip at transition and deck boards. Replace worn boards.	Modify transition or threshold (< 1/4" lip).	\$500.00	N/A	3	5-6 Years
5	Hemlock County Park		Fishing	Fishing Pier	Accessible route has gaps that exceed 1/2-inch	206, 302.3	1"	Replace worn boards.	Modify or replace route.	\$500.00	N/A	3	5-6 Years
B1	Hemlock County Park	Pit Toilet Building	Fishing	Permanent Restrooms	Parking/Access	208	1"	Exterior approach walk at door is irregular, too small and has vertical transition to floor greater than 1/4" at some points.	Add new insulated (minimum 48"x48") concrete floating slab with maximum 1/50 slope. Connected to an accessible site route.	\$3,000.00	Replace restroom.	3	5-6 Years
B2	Hemlock County Park	Pit Toilet Building	Fishing	Permanent Restrooms	Signage	703		Wall mounted accessible room sign at entry door is missing.	Add ADA room sign.	\$200.00	N/A	1	1-2 Years
B3	Hemlock County Park	Pit Toilet Building	Fishing	Permanent Restrooms	Entry	404		Door lever handle is not functioning and door does not easily close.	Replace door handle and adjust door.	\$500.00	N/A	3	5-6 Years
B4	Hemlock County Park	Pit Toilet Building	Fishing	Permanent Restrooms	Restroom	212, 213, 601-610		The vertical toilet grab bar (under ANSI 117.1) is not provided. This is not required under ADA. Thus this is optional for existing condition. The vertical grab bar is helpful for some individuals.	Optional: Add grab bar.	\$300.00	N/A	3	5-6 Years
1	Summer Oaks Boat Landing		Boat Launch	Automobile Parking	Accessible parking missing or improperly located	208.2-3		No ADA parking identified. No pavement markings present.	Add accessible space and sign properly.	\$1,200.00	N/A	1	1-2 Years
2	Summer Oaks Boat Landing		Boat Launch	Portable Restroom	Other	213		Portable restroom is not accessible type.	Replace with accessible type.	\$600.00	N/A	1	1-2 Years
3	Summer Oaks Boat Landing		Boat Launch	Boat Launch	Accessible route slope exceeds 1:20 (5 percent) without Handrails	206, 403		Transition to pier is greater than 8%. Extend transition plate or regrade pavement to pier. Route from parking lot is not accessible. Current launch turnaround does not allow for parking nearer launch.	Modify or replace route.	\$1,200.00	Add signage identifying alternative accessible feature.	1	1-2 Years
4	Summer Oaks Boat Landing		Boat Launch	Boat Launch	Accessible route is not firm, stable, and slip-resistant	206, 302.1		Debris on pier.	Maintenance - Clear debris from route.	Maintenance	N/A	1	1-2 Years
1	Great Sauk Trail		Biking	Pedestrian Trail	Adjacent clear space (30-inch wide x 48-inch deep) is not provided.	206	15"	Move bench to one side of pad to provide required companion area.	Relocate bench.	Maintenance	N/A	1	1-2 Years
2	Great Sauk Trail		Biking	Benches / Viewing Areas	Adjacent clear space (30-inch wide x 48-inch deep) is not provided.	206	15"	Move bench on pad.	Relocate bench.	Maintenance	N/A	1	1-2 Years
3	Great Sauk Trail		Biking	Benches / Viewing Areas	Adjacent clear space (30-inch wide x 48-inch deep) is not provided.	206	24"	Move bench on pad.	Relocate bench.	Maintenance	N/A	1	1-2 Years
4	Great Sauk Trail		Biking	Monument / Historic Site	Accessible route has lips that exceed 1/4-inch	206, 302		Weeds growing in pavement joint.	Maintenance - Clear vegetation from route.	Maintenance	N/A	1	1-2 Years
5	Great Sauk Trail		Biking	Picnic Area	Other	1011.2.1, 1011.4, 306		Table is temporary. Not located on pad - relocate or remove.	Add or modify a minimum of one picnic table to be of the accessible type.	\$1,000.00	N/A	1	1-2 Years
6	Great Sauk Trail		Biking	Monument / Historic Site	Accessible route is not firm, stable, and slip-resistant	206, 302.1		Debris on pavement.	Maintenance - Clear debris from route.	Maintenance	N/A	1	1-2 Years
7	Great Sauk Trail		Biking	Monument / Historic Site	Adjacent clear space (30-inch wide x 48-inch deep) is not provided.	206	12"	Extend pad under bench.	Add companion seating area (min 30in x 48in).	\$500.00	N/A	1	1-2 Years
8	Great Sauk Trail		Biking	Monument / Historic Site	Accessible route missing	206.2.1		Add concrete pad or level gravel (2%) or remount sign at same elevation as path.	Add accessible route.	\$500.00	N/A	3	5-6 Years
9	Great Sauk Trail		Biking	Benches / Viewing Areas	Adjacent clear space (30-inch wide x 48-inch deep) is not provided.	206		Move bench to allow for appropriate companion area.	Relocate bench.	Maintenance	N/A	1	1-2 Years
10	Great Sauk Trail		Biking	Benches / Viewing Areas	Accessible route missing	206.2.1		Gravel must be maintained regularly to be accessible.	Maintenance - On-going.	Maintenance	N/A	1	1-2 Years
11	Great Sauk Trail		Biking	Benches / Viewing Areas	Adjacent clear space (30-inch wide x 48-inch deep) is not provided.	206		Gravel is below path elevation. Add gravel to level companion area. Gravel must be maintained to be accessible.	Maintenance - On-going.	\$250.00	N/A	1	1-2 Years
12	Great Sauk Trail		Biking	Benches / Viewing Areas	Adjacent clear space (30-inch wide x 48-inch deep) is not provided.	206		Gravel must be maintained regularly to be accessible.	Add companion seating area (min 30in x 48in).	\$500.00	N/A	1	1-2 Years
13	Great Sauk Trail		Biking	Other Feature	Accessible route is not firm, stable, and slip-resistant	206, 302.1		Trail Pay Station. Pave gravel up to pay station.	Modify or replace route.	\$500.00	N/A	2	3-4 Years
14	Great Sauk Trail		Biking	Benches / Viewing Areas	Adjacent clear space (30-inch wide x 48-inch deep) is not provided.	206		Modify placement of bench on pad or add to pad.	Relocate bench.	Maintenance	N/A	1	1-2 Years
15	Great Sauk Trail		Biking	Benches / Viewing Areas	Adjacent clear space (30-inch wide x 48-inch deep) is not provided.	206		Modify placement of bench on pad or add to pad.	Relocate bench.	Maintenance	N/A	1	1-2 Years
16	Great Sauk Trail		Biking	Monument / Historic Site	Adjacent clear space (30-inch wide x 48-inch deep) is not provided.	206		Modify placement of bench on pad or add to pad.	Relocate bench.	Maintenance	N/A	1	1-2 Years
17	Great Sauk Trail		Biking	Monument / Historic Site	Accessible route missing	206.2.1		No route from trail to sculpture. Add a route or staging area or relocate sculpture.	Add accessible route.	\$1,000.00	Classify as non-interactive art feature, no accommodation required.	1	1-2 Years

SECTION III - TRANSITION PLAN



Item Number	Name of Park	Facility Name	Facility Type	Feature Type	Observed Deficiency	Code	Measurement	Notes	Solution	Cost	Alternate Solution	Priority	Timeframe for Completion
1	White Mound County Park	Restroom	Benches / Viewing Areas	Accessible parking improperly marked	208, 502.2-3			Raise sign to 60"	Re-mount sign.	\$50.00	N/A	1	1-2 Years
2	White Mound County Park	Boat Launch	Fishing Pier	Accessible route slope exceeds 1:20 (5 percent) without Handrails	206, 403			Replace ~50' of path	Modify or replace route.	\$2,000.00	N/A	5	9-10 Years
3	White Mound County Park	Picnic Area	Picnic Area	Other	1011.2.1, 1011.4, 306			No accessible tables or routes. Typ of 6	Add route and modify or replace picnic table with one of an accessible type.	\$2,000.00	Relocate features to an accessible route.	5	9-10 Years
4	White Mound County Park	Wildlife Viewing	Benches / Viewing Areas	Accessible route missing	206.2.1			No route or companion area	Add route and companion seating area (min 30in x 48in).	\$2,000.00	Relocate features to an accessible route.	5	9-10 Years
5	White Mound County Park	Picnic Area	Picnic Area	Accessible route missing	206.2.1	2"		No route to grill, typ of 2	Add accessible route.	\$1,000.00	Relocate features to an accessible route.	5	9-10 Years
6	White Mound County Park	Shelter	Park Shelter	Other	1011.2.1, 1011.4, 306	2.7%		No accessible tables provided. Typ of 6	Modify a minimum of one picnic table to the accessible type.	\$200.00	Relocate features to an accessible route.	1	1-2 Years
7	White Mound County Park	Shelter	Park Shelter	Accessible route has lips that exceed 1/4-inch	206, 302	2.85 to 5.15%		Weeds in gap between trail and sidewalk.	Modify or replace route.	\$1,200.00	N/A	1	1-2 Years
8	White Mound County Park	Boat Launch	Automobile Parking	Accessible parking missing or improperly located	208.2-3			No pavement markings.	Add a minimum of one van accessible parking stall.	\$1,200.00	N/A	1	1-2 Years
9	White Mound County Park	Boat Launch	Boat Launch	Accessible route has lips that exceed 1/4-inch	206, 302	40"		Add transition plate or regrade pavement.	Modify transition or threshold (< 1/4" lip).	\$500.00	N/A	2	3-4 Years
10	White Mound County Park	Boat Launch	Boat Launch	Accessible route has gaps that exceed 1/2-inch	206, 302.3			Adjust pier decking at hinge point.	Modify or replace route.	\$250.00	Add filler or transition plate.	2	3-4 Years
11	White Mound County Park	Boat Launch	Boat Launch	Accessible route cross-slope exceeds 1:48 (2 percent)	206, 502.4	41"		Adjust pier cross slope.	Modify or replace route.	Maintenance	N/A	2	3-4 Years
12	White Mound County Park	Campground	Camp Sites	Curb ramp cross-slope exceeds 1:48 (2 percent)	206, 406.1, 405.3	40"		ADA camp stalls near ADA restroom.	Modify or replace route.	\$5,000.00	Relocate features to a suitable location.	3	5-6 Years
13	White Mound County Park	Campground	Standalone Drinking Water	Other	602	37"		Drinking fountain is not accessible type and not an accessible route.	Replace with accessible type.	\$5,000.00	Add signage identifying alternative accessible feature.	1	1-2 Years
14	White Mound County Park	Campground	Standalone Drinking Water	Other	602			Drinking fountain is not accessible type and not an accessible route.	Replace with accessible type.	\$5,000.00	Add signage identifying alternative accessible feature.	1	1-2 Years
15	White Mound County Park	Campground	Play Equipment	Accessible route missing	206.2.1			Route does not extend to playground border.	Add accessible route.	\$3,600.00	N/A	4	7-8 Years
16	White Mound County Park	Campground	Benches / Viewing Areas	Other	206	63"/6"		No route or companion area, combine with route to playground	Add route and companion seating area (min 30in x 48in).	\$500.00	Relocate features to an accessible route.	4	7-8 Years
17	White Mound County Park	Boat Launch	Boat Launch	Accessible route cross-slope exceeds 1:48 (2 percent)	206, 502.4			Pier leaning, adjust pier.	Modify or replace route.	Maintenance	N/A	1	1-2 Years
18	White Mound County Park	Swimming Area	Swimming Beach	Accessible route slope exceeds 1:20 (5 percent) without Handrails	206, 403	60"		Accessible beach mat exceeds 5%. Regrade if allowed by DNR.	Modify or replace route.	Maintenance	Repair ruts in mat surface and allow slope to remain.	5	9-10 Years
19	White Mound County Park	Swimming Area	Swimming Beach	Accessible route slope exceeds 1:20 (5 percent) without Handrails	206, 403	27 1/2" clear		~40'	Modify or replace route.	\$2,000.00	N/A	5	9-10 Years
20	White Mound County Park	Swimming Area	Picnic Area	Accessible route missing	206.2.1			Tables are not accessible type and there's no accessible route, typ of 13	Add route and modify or replace picnic table with one of an accessible type.	\$4,500.00	Relocate features to an accessible route.	4	7-8 Years
21	White Mound County Park	Swimming Area	Picnic Area	Accessible route missing	206.2.1			No accessible route to fire pit or grill. Add gravel path.	Add accessible route.	\$3,000.00	Relocate features to an accessible route.	4	7-8 Years
22	White Mound County Park	Swimming Area	Picnic Area	Accessible route missing	206.2.1			County is planning for ADA pad.	Add route and modify or replace picnic table with one of an accessible type.	\$2,000.00	N/A	4	7-8 Years
23	White Mound County Park	Shelter	Picnic Area	Other	1011.2.1, 1011.4, 306			No accessible tables, route exceeds 5%	Add route and modify or replace picnic table with one of an accessible type.	\$1,500.00	Relocate features to an accessible route.	1	1-2 Years
24	White Mound County Park	Playground	Play Equipment	Accessible route missing	206.2.1			Move accessible stall to west end of lot and add route to playground.	Add accessible route.	\$4,500.00	Add signage identifying alternative accessible feature.	3	5-6 Years
25	White Mound County Park	Playground	Automobile Parking	Accessible parking missing or improperly located	208.2-3	52"		Stall is 8', access aisle is 6'. Minimum of 8' required.	Modify pavement marking.	\$250.00	N/A	1	1-2 Years
26	White Mound County Park	Picnic Area	Picnic Area	Accessible route missing	206.2.1			No route to tables tables are not accessible type, typ of 4	Add route and modify or replace picnic table with one of an accessible type.	\$2,000.00	Relocate features to an accessible route.	1	1-2 Years
27	White Mound County Park	Picnic Area	Standalone Drinking Water	Other	602	1.5"		Not accessible type. Replace and add new route.	Replace with accessible type.	\$5,000.00	Add signage identifying alternative accessible feature.	4	7-8 Years
28	White Mound County Park	Picnic Area	Picnic Area	Accessible route is not firm, stable, and slip-resistant	206, 302.1			Weeds growing on path. Remove weeds and fill cracks.	Modify or replace asphalt.	\$500.00	N/A	1	1-2 Years
29	White Mound County Park	Picnic Area	Automobile Parking	Accessible route has lips that exceed 1/4-inch	206, 302			Pavement is cracking. Repair and restripe parking stall.	Modify or replace asphalt.	\$1,500.00	N/A	5	9-10 Years
30	White Mound County Park	Picnic Area	Automobile Parking	Accessible parking improperly marked	208, 502.2-3			N/A	Re-mount sign.	Maintenance	N/A	1	1-2 Years
31	White Mound County Park	Shelter	Automobile Parking	Accessible parking improperly marked	208, 502.2-3			N/A	Re-mount sign.	Maintenance	N/A	1	1-2 Years
32	White Mound County Park	Shelter	Automobile Parking	Accessible parking improperly marked	208, 502.2-3			N/A	Re-mount sign.	Maintenance	N/A	1	1-2 Years
33	White Mound County Park	Shelter	Park Shelter	Accessible route missing	206.2.1	10.30%		Mowed grass path.	Add accessible route.	\$8,000.00	Add signage identifying alternative accessible shelter.	5	9-10 Years
34	White Mound County Park	Shelter	Park Shelter	Accessible route missing	206.2.1			11 tables, 3 ada- 2 grills not on route or accessible type. Combine with route to shelter.	Add accessible route.	\$1,000.00	Relocate features to an accessible route.	5	9-10 Years
35	White Mound County Park	Playground	Play Equipment	Playground does not have proper ratio of elevated play to ground play components	206, 240, 1008			Replace playground.	Add ground play elements.	\$5,000.00	N/A	4	7-8 Years
36	White Mound County Park	Shelter	Picnic Area	Other	1011.2.1, 1011.4, 306			N/A	Modify a minimum of one picnic table to the accessible type.	\$500.00	Replace tables with accessible type.	1	1-2 Years



SECTION III - TRANSITION PLAN

Item Number	Name of Park	Facility Name	Facility Type	Feature Type	Observed Deficiency	Code	Measurement	Notes	Solution	Cost	Alternate Solution	Priority	Timeframe for Completion
37	White Mound County Park		Campground	Camp Sites	Accessible route missing	206.2.1	2.6%	Extend pavement to water hydrant.	Add accessible route.	\$500.00	N/A	1	1-2 Years
38	White Mound County Park		Boat Launch	Boat Launch	Accessible route missing	206.2.1	90'	Route does not extend to pay station.	Add accessible route.	\$250.00	N/A	1	1-2 Years
39	White Mound County Park		Playground	Play Equipment	Playground surfacing does not meet ASTM F1951-99	206, 240, 1008		Surfacing is worn and displaced in spots.	Modify or replace playground surfacing.	\$1,000.00	N/A	4	7-8 Years
40	White Mound County Park		Campground	Camp Sites	Accessible parking signage missing or improper	208, 502.6	~95'	Mark ADA campsites.	Add accessible space and sign properly.	\$1,000.00	N/A	1	1-2 Years
B1.1	White Mound County Park	Prairie Smoke Terrace (building)	Swimming Area	Office / Other Building	Entry	404		The interior entry door swing infringes on the maneuvering space for the exterior door, 48" required.	Add automatic door opener at each door.	\$3,000.00	A. Change swing of doors; B. Short-term: Offer staff assistance for operation - add doorbell at entrance.	1	1-2 Years
B1.2	White Mound County Park	Prairie Smoke Terrace (building)	Swimming Area	Office / Other Building	Furnishing	308		Lobby has public AED (defibrillator), shall not be mounted above 48" and shall not infringe on wall aisle with projection beyond 4".	Relocate.	\$0.00	N/A	1	1-2 Years
B1.3	White Mound County Park	Prairie Smoke Terrace (building)	Swimming Area	Office / Other Building	Restroom	212, 213, 601-610		Shower/Changing Room - Changing bench is 15" x 63" without clear floor space at one end. 20"x42" bench required with 30" wide area at one end. Room does appear to be large enough to accommodate compliant changing bench.	No apparent solution.	\$0.00	Modify to maximum allowable extent. Reduce bench width to allow for adjacent 30" clearance, note that bench will not meet minimum requirements.	4	7-8 Years
B1.4	White Mound County Park	Prairie Smoke Terrace (building)	Swimming Area	Office / Other Building	Restroom	212, 213, 601-610		Shower/Changing Room - Clothes/towel hooks are at higher than 48".	Add one hook at lower height.	\$100.00	N/A	4	7-8 Years
B1.5	White Mound County Park	Prairie Smoke Terrace (building)	Swimming Area	Office / Other Building	Entry	404		Double Interior Community Room Doors Each door leaf is 30" wide, only one leaf is active with an emergency exist device (push bar) and the other has flush bolts. Lower (below 34") surface mounted hardware for egress device also infringes on clear opening.	Replace door leaves with one that is 36" and one that is 24". Reuse most hardware.	\$4,000.00	A. Add ADA door opener; B. Hold open doors during business hours.	1	1-2 Years
B1.6	White Mound County Park	Prairie Smoke Terrace (building)	Swimming Area	Office / Other Building	Furnishing	308		Vending Machines - ALL machines have controls above 48".	Replace with accessible machines.	by vendor	Offer staff assistance for operation.	1	1-2 Years
B2.1	White Mound County Park	Toilet Buildings - ADA Beach	Picnic Area	Permanent Restrooms	Entry	404		Exterior approach walk at door is irregular, too small and has vertical transition to floor greater than 1/4" at some points.	Add new insulated (minimum 48"x48") concrete floating slab with maximum 1/50 slope. Connected to an accessible site route.	\$3,000.00	N/A	2	3-4 Years
B2.2	White Mound County Park	Toilet Buildings - ADA Beach	Picnic Area	Permanent Restrooms	Signage	703		Wall mounted accessible room signs at entry door is missing.	Add ADA room sign.	\$200.00	N/A	1	1-2 Years
B2.3	White Mound County Park	Toilet Buildings - ADA Beach	Picnic Area	Permanent Restrooms	Entry	404		Door lever handle is not functioning and door does not easily close.	Replace door handle and adjust door.	\$500.00	N/A	1	1-2 Years
B2.4	White Mound County Park	Toilet Buildings - ADA Beach	Picnic Area	Permanent Restrooms	Restroom	212, 213, 601-610		The vertical toilet grab bar (under ANSI 117.1) is not provided. This is not required under ADA. Thus this is optional for existing condition. The vertical grab bar is helpful for some individuals.	Optional: Add grab bar.	\$300.00	N/A	1	1-2 Years
B2.5	White Mound County Park	Toilet Buildings - Mens/ Womens Playground	Picnic Area	Permanent Restrooms	Restroom	212, 213, 601-610		Building is not accessible, but nearby South-west Pit Toilet Building is.	Add signage directing users to nearest accessible facility.	\$300.00	Optionally install a new accessible pit toilet building in proximity to the nearby parking lot.	5	9-10 Years
B2.6	White Mound County Park	Toilet Buildings - Mens/ Womens Playground (The picture on the GIS website shows the building as the womens bathroom by the playground, but is marked at the ADA bathroom by Shelter #1)	Picnic Area	Permanent Restrooms	Signage	703		Wall mounted accessible room signs at entry door is missing.	Add ADA room sign.	\$300.00	N/A	5	9-10 Years
B3.1	White Mound County Park	Toilet Buildings - Horse Campground	Campground	Permanent Restrooms	Restroom	212, 213, 601-610		These two multi occupant Men's and Women's units are on a hilltop and not accessibly configured or on an accessible route from nearby parking lot.	Add signage directing users to nearest accessible facility.	\$300.00	Optionally install a new accessible pit toilet building in proximity to the nearby parking lot.	1	1-2 Years
B3.2	White Mound County Park	Toilet Buildings - Horse Campground	Campground	Permanent Restrooms	Signage	703	~200 LF	Wall mounted accessible room sign at entry door is missing.	Add ADA room sign.	\$200.00	N/A	1	1-2 Years
B4.1	White Mound County Park	Toilet Buildings - ADA Boat Landing	Boat Launch	Permanent Restrooms	Entry	404		Exterior approach walk at door is irregular, too small and has vertical transition to floor greater than 1/4" at some points.	Add new insulated (minimum 48"x48") concrete floating slab with maximum 1/50 slope. Connected to an accessible site route.	\$3,000.00	N/A	2	3-4 Years
B4.2	White Mound County Park	Toilet Buildings - ADA Boat Landing	Boat Launch	Permanent Restrooms	Signage	703	Route has settlement	Wall mounted accessible room sign at entry door is missing.	Add ADA room sign.	\$200.00	N/A	1	1-2 Years
B4.3	White Mound County Park	Toilet Buildings - ADA Boat Landing	Boat Launch	Permanent Restrooms	Entry	404		Door lever handle is not functioning and door does not easily close.	Replace door handle and adjust door.		N/A	1	1-2 Years
B4.4	White Mound County Park	Toilet Buildings - ADA Boat Landing	Boat Launch	Permanent Restrooms	Restroom	212, 213, 601-610	8.3%	The vertical toilet grab bar (under ANSI 117.1) is not provided. This is not required under ADA. Thus this is optional for existing condition. The vertical grab bar is helpful for some individuals.	Optional: Add grab bar.	\$300.00	N/A	1	1-2 Years
B4.5	White Mound County Park	Toilet Buildings - Mens/ Womens Boat Landing	Boat Launch	Permanent Restrooms	Restroom	212, 213, 601-610	5.65%	Building is not accessible, but nearby North-east Pit Toilet Building is.	Add signage directing users to nearest accessible facility.	\$300.00	N/A	5	9-10 Years
B4.6	White Mound County Park	Toilet Buildings - Mens/ Womens Boat Landing	Boat Launch	Permanent Restrooms	Signage	703	1"	Wall mounted accessible room signs at entry door is missing.	Add ADA room sign.	\$300.00	N/A	5	9-10 Years

SECTION III - TRANSITION PLAN



Item Number	Name of Park	Facility Name	Facility Type	Feature Type	Observed Deficiency	Code	Measurement	Notes	Solution	Cost	Alternate Solution	Priority	Timeframe for Completion
B5.1	White Mound County Park	Toilet Buildings - ADA Campground	Campground	Permanent Restrooms	Entry	404	170'	Exterior approach walk at door is irregular, too small and has vertical transition to floor greater than 1/4" at some points.	Add new insulated (minimum 48"x48") concrete floating slab with maximum 1/50 slope. Connected to an accessible site route.	\$3,000.00	N/A	1	1-2 Years
B5.2	White Mound County Park	Toilet Buildings - ADA Campground	Campground	Permanent Restrooms	Signage	703		Wall mounted accessible room sign at entry door is missing.	Add ADA room sign.	\$200.00	N/A	1	1-2 Years
B5.3	White Mound County Park	Toilet Buildings - ADA Campground	Campground	Permanent Restrooms	Entry	404	41"	Door has a non-accessible and non-code compliant barrel bolt lock.	Add a lever handle privacy door latch and remove deadbolt.	\$600.00	N/A	1	1-2 Years
B5.4	White Mound County Park	Toilet Buildings - ADA Campground	Campground	Permanent Restrooms	Restroom	212, 213, 601-610		The vertical toilet grab bar (under ANSI 117.1) is not provided. This is not required under ADA. Thus this is optional for existing condition. The vertical grab bar is helpful for some individuals.	Optional: Add grab bar.	\$300.00	N/A	1	1-2 Years
B5.5	White Mound County Park	Toilet Buildings - Mens/Womens Campground	Campground	Permanent Restrooms	Restroom	212, 213, 601-610		Building is not accessible, but nearby Campground Pit Toilet Building is. Add signage directing disabled users to nearby accessible pit toilet building.	Add signage directing users to nearest accessible facility.	\$300.00	N/A	1	1-2 Years
B6.1	White Mound County Park	Toilet Buildings - Mens/Womens Campground	Campground	Permanent Restrooms	Signage	703		Wall mounted accessible room sign at entry door is missing.	Add ADA room sign.	\$300.00	N/A	1	1-2 Years
B6.2	White Mound County Park	Shower Building	Campground	Permanent Restrooms	Restroom	212, 213, 601-610		Shower rooms are not fully accessible configured, stall size is incorrect, proper changing bench is not provided, accessible clothes/towel hook not provided.	Modify one of the center shower rooms to capture some area from the adjacent room. Designate the new room as accessible. Add ADA signage to all rooms.	\$20,000.00	N/A	4	7-8 Years
B6.3	White Mound County Park	Shower Building	Campground	Permanent Restrooms	Furnishing	308		The Little Free Library is mounted above the 48" range.	Relocate to a lower position.	\$100.00	Offer staff assistance for operation.	1	1-2 Years
B6.4	White Mound County Park	Shower Building	Campground	Permanent Restrooms	Restroom	212, 213, 601-610		Lavatory sinks are lacking proper mirror height, insulated piping and trap.	Revise one sink location and add symbol of accessibility.	\$800.00	N/A	4	7-8 Years
B6.5	White Mound County Park	Shower Building	Campground	Permanent Restrooms	Parking/Access	208		No Accessible parking stall in proximity to this central building.	Add accessible space and sign properly.	\$1,500.00	Stripe and add signage one accessible stall at this building on existing asphalt drive.	1	1-2 Years
1	Yellow Thunder County Park		Historic Marker	Automobile Parking	Accessible parking missing or improperly located	208.2-3		Gravel parking lot. Limited disturbance due to historic nature of site.	Add a minimum of one van accessible parking stall.	\$4,000.00	N/A	5	9-10 Years
2	Yellow Thunder County Park		Historic Marker	Monument / Historic Site	Accessible route missing	206.2.1		Route to signage in grass. Limited disturbance due to historic nature of site.	Modify or replace route.		Offer alternative accommodation such as audio tour or augmented reality interface.	5	9-10 Years
1	Man Mound County Park		Historic Marker	Automobile Parking	Accessible parking missing or improperly located	208.2-3		Existing turn around does not provide space for proper parking stalls. Site is on national register of historic places.	No apparent solution.		N/A	5	9-10 Years
2	Man Mound County Park		Historic Marker	Monument / Historic Site	Accessible route missing	206.2.1		Site is a national historic landmark.	No apparent solution.		Offer alternative accommodation such as audio tour or augmented reality interface.	5	9-10 Years
1	Timme's Mill		Boat Launch	Automobile Parking	Accessible parking missing or improperly located	208.2-3		No pavement markings. Remark parking for accessible parking stall and add appropriate signage.	Add a minimum of one van accessible parking stall.	\$1,200.00	Adjust curbline to accommodate accessible parking stall (10-ft width required) to allow for emergency vehicle access to dam/launch.	1	1-2 Years
2	Timme's Mill		Fishing	Fishing Area	Stairs are missing handrails or handrails are not compliant	405.8		Extend handrails minimum 1' past last riser.	Modify or replace route.	\$500.00	N/A	1	1-2 Years
3	Timme's Mill		Fishing	Fishing Area	Accessible route missing	206.2.1		Step up to sidewalk from parking lot. Stairs are only means of egress to fishing area.	Modify or replace route.	\$2,500.00	Add signage identifying alternative accessible feature.	1	1-2 Years
4	Timme's Mill		Boat Launch	Boat Launch	Accessible route slope exceeds 1:20 (5 percent) without Handrails	206, 403	17% above spillway; 19% below spillway	Access must be maintained to conveyer.	Add accessible route.	\$25,000.00	Add signage identifying alternative accessible feature.	1	1-2 Years
5	Timme's Mill		Boat Launch	Boat Launch	Other			Existing boat launch is not accessible. Add transfer system.	Replace with accessible type.	\$5,000.00	Add signage identifying alternative accessible feature.	1	1-2 Years

TOTAL ESTIMATE COST	\$271,050.00
---------------------	--------------



SECTION III - TRANSITION PLAN



AUDIT SUMMARIES

Facility Name	Address
White Mound County Park	S7995 White Mound Drive, Hillpoint
Hemlock County Park	E3601 N Dutch Hollow Road, LaValle
Timme Mill	53940 S Burritt Ave, Lake Delton
Weidman Woods	S443 Town Hall Road, Reedsburg
County Forest	S12604 Porter Road, Spring Green
County Farm	S4555 County Road CH, Reedsburg
Lake Redstone County Park	S4522 Douglas Road, LaValle
North End Boat Landing	S4765 LaValle Road, LaValle
Summer Oaks Boat Landing	E12614 Kilpatrick Point Drive, Merrimac
Douglas Landing	E4603 Douglas Road, LaValle
Yellow Thunder Memorial	S2653 County Road A, Baraboo
Man Mound National Historic Monument	E13085 Man Mound Road, Baraboo
Bluffview Park	(No Address)
Great Sauk State Trail	(No Address)



APPENDIX - A



No Auditable Features Present at Time of Audit



Data Sources:
Sauk County
State of Wisconsin
Esri



- Sauk County Parks
- Trails and Paths
- Recreation Buildings
- Other Building
- Other Parks

1: Bluffview Community Park

ADA Facility Audit

Sauk County, WI



APPENDIX - A



Data Sources:
 Sauk County
 State of Wisconsin
 Esri



- Sauk County Parks
- Trails and Paths
- Recreation Buildings
- Other Building
- Other Parks

2: County Farm

ADA Facility Audit

Sauk County, WI



APPENDIX - A



Print Date: 11/22/2021
 Printed by: dscrmlt; File: wisn-pc.com\visr\project\1010985\10985usa\GIS\Sauk County\A0A.aprx



Data Sources:
 Sauk County
 State of Wisconsin
 Esri



- Sauk County Parks
- Trails and Paths
- Recreation Buildings
- Other Building
- Other Parks

3: Douglas Landing

ADA Facility Audit

Sauk County, WI

Item #:

1

Douglas Landing



Code:

206.2.1

Observed Deficiency:

Accessible route missing

Notes:

Existing gravel roadbed is covered with grass. Property in the floodplain. Gravel or paved route to at least one bench/table is

Recommended Solution:

Add accessible route.

Alternate Solution:

Add signage identifying alternative accessible feature.

Item #:

2

Douglas Landing



Code:

208.2-3

Observed Deficiency:

Accessible parking missing or improperly located

Notes:

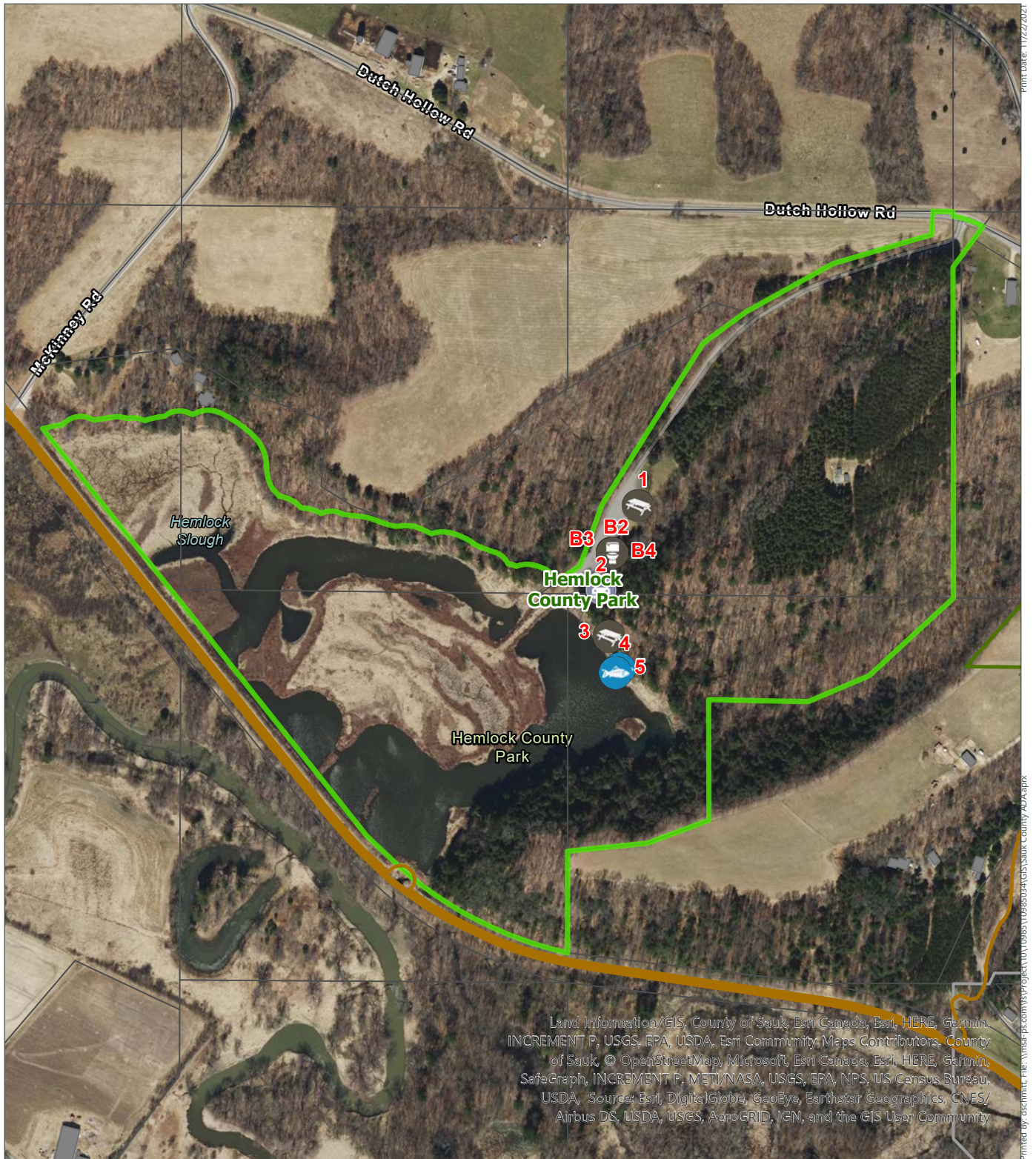
Gravel lot, no stalls marked. Pave and mark accessible stall.

Recommended Solution:

Add accessible space and sign properly.

Alternate Solution:

Maintain gravel parking, add painted wheel stop and appropriate signage.



Data Sources:
Sauk County
State of Wisconsin
Esri



- Sauk County Parks
- Trails and Paths
- Recreation Buildings
- Other Building
- Other Parks

4: Hemlock County Park

ADA Facility Audit

Sauk County, WI

Item #:

1

Hemlock County Park

Code:

206.2.1



Observed Deficiency:

Accessible route missing

Notes:

No route to grill or picnic tables. Picnic tables and grill or not accessible type. County is considering removing tables until master

Recommended Solution:

Add route and modify or replace picnic table with one of an accessible type.

Alternate Solution:

N/A

Item #:

2

Hemlock County Park

Code:

208.2-3



Observed Deficiency:

Accessible parking missing or improperly located

Notes:

No marked stalls in lot. Mark and add appropriate signage.

Recommended Solution:

Add or remark for an accessible parking stall.

Alternate Solution:

N/A

Item #:

3

Hemlock County Park

Code:

206.2.1



Observed Deficiency:

Accessible route missing

Notes:

No route to tables. Tables are not accessible type.

Recommended Solution:

Add route and modify or replace picnic table with one of an accessible type.

Alternate Solution:

N/A

Item #:

4

Hemlock County Park

Code:

206, 302



Observed Deficiency:

Accessible route has lips that exceed 1/4-inch

Notes:

Lip at transition and deck boards. Replace worn boards.

Recommended Solution:

Modify transition or threshold (< 1/4" lip).

Alternate Solution:

N/A

Item #:

5

Hemlock County Park

Code:

206, 302.3



Observed Deficiency:

Accessible route has gaps that exceed 1/2-inch

Notes:

Replace worn boards.

Recommended Solution:

Modify or replace route.

Alternate Solution:

N/A

Item #:

B1

Hemlock County Park

Pit Toilet Building

Code:

208



Observed Deficiency:

Parking/Access

Notes:

Exterior approach walk at door is irregular, too small and has vertical transition to floor greater than 1/4" at some points.

Recommended Solution:

Add new insulated (minimum 48"x48") concrete floating slab with maximum 1/50 slope. Connected to an accessible site route.

Alternate Solution:

Replace restroom.

Item #:

B2

Hemlock County Park

Pit Toilet Building

Code:

703



Observed Deficiency:

Signage

Notes:

Wall mounted accessible room sign at entry door is missing.

Recommended Solution:

Add ADA room sign.

Alternate Solution:

N/A

Item #:

B3

Hemlock County Park

Pit Toilet Building

Code:

404



Observed Deficiency:

Entry

Notes:

Door lever handle is not functioning and door does not easily close.

Recommended Solution:

Replace door handle and adjust door.

Alternate Solution:

N/A

Item #:

B4

Hemlock County
Park

Pit Toilet
Building

Code:

212, 213, 601-610



Observed Deficiency:

Restroom

Notes:

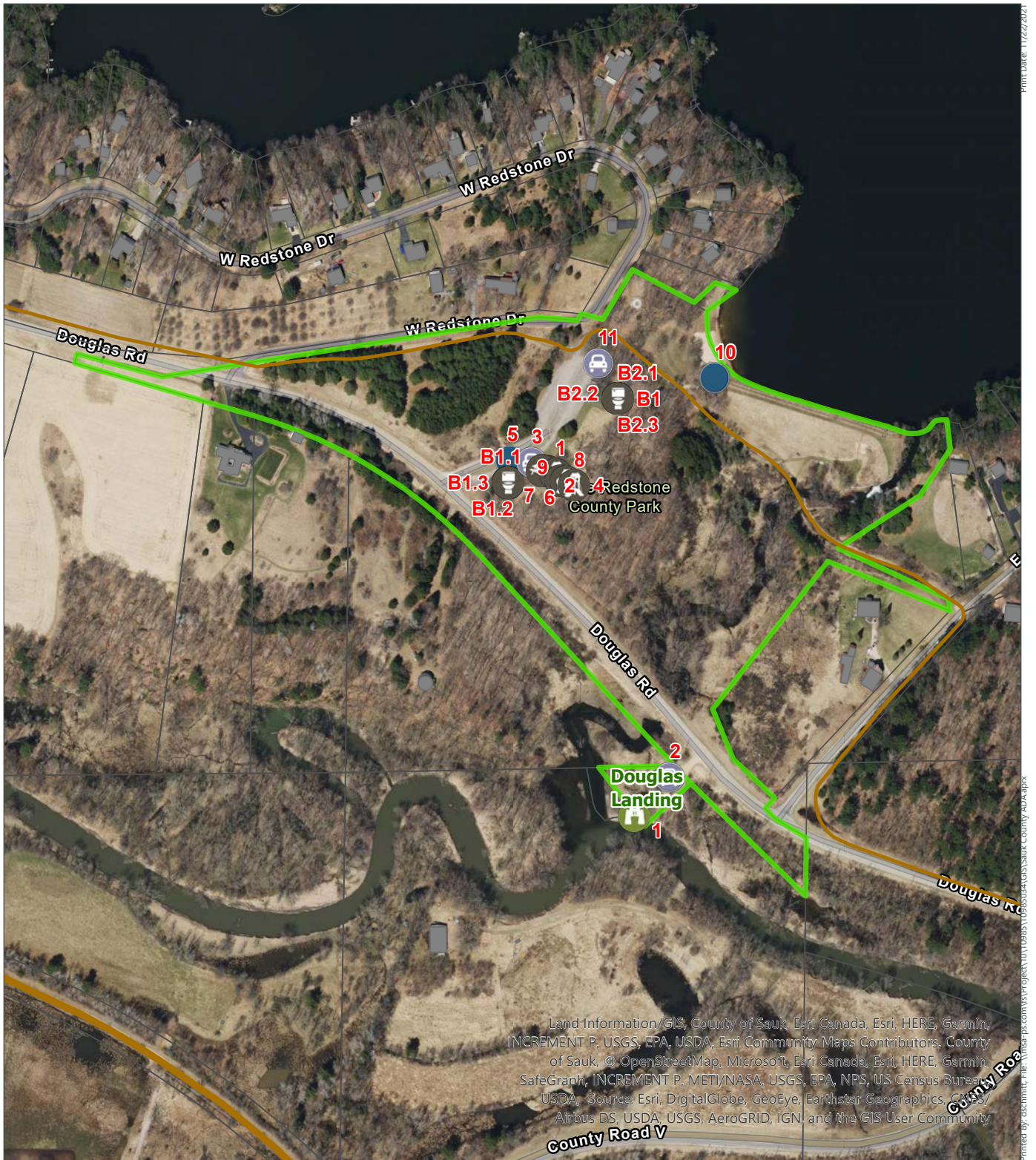
The vertical toilet grab bar (under ANSI 117.1) is not provided. This is not required under ADA. Thus this is optional for existing

Recommended Solution:

Optional: Add grab bar.

Alternate Solution:

N/A



Data Sources:
Sauk County
State of Wisconsin
Esri



- Sauk County Parks
- Trails and Paths
- Recreation Buildings
- Other Building
- Other Parks

5: Lake Redstone County Park

ADA Facility Audit

Sauk County, WI

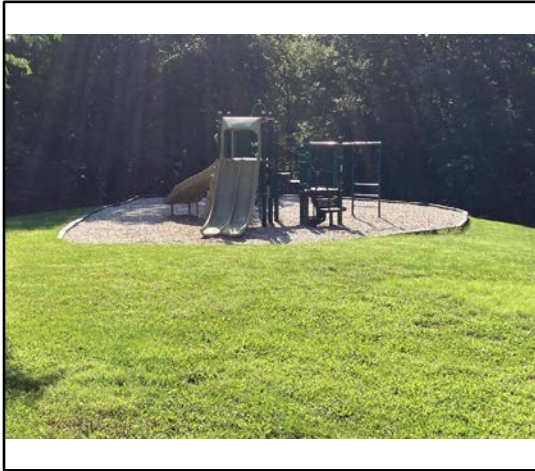
Item #:

1

Lake Redstone
County Park

Code:

206.2.1



Observed Deficiency:

Accessible route missing

Notes:

Add accessible route to transfer platform and swing bay. Connect from west side of parking lot. Add or remark accessible parking

Recommended Solution:

Add accessible route.

Alternate Solution:

N/A

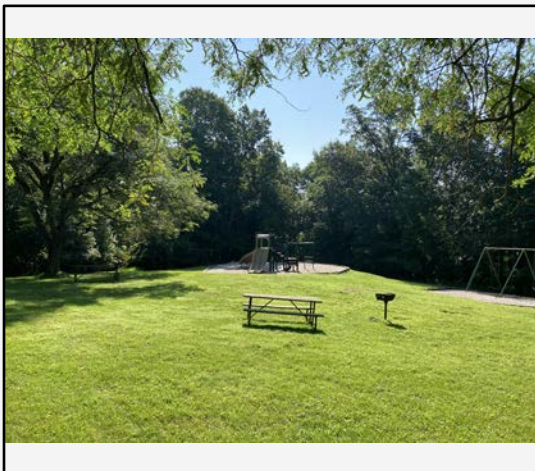
Item #:

2

Lake Redstone
County Park

Code:

206.2.1



Observed Deficiency:

Accessible route missing

Notes:

Add route or move table(s) and grill.

Recommended Solution:

Add accessible route.

Alternate Solution:

Relocate features to an accessible route.

Item #:

3

Lake Redstone
County Park

Code:

208.2-3



Observed Deficiency:

Accessible parking missing or improperly located

Notes:

Add sign and proper pavement markings.

Recommended Solution:

Add or remark for an accessible parking stall.

Alternate Solution:

N/A

Item #:

4

Lake Redstone
County Park

Code:

206, 240, 1008



Observed Deficiency:

Playground does not have proper ratio of elevated play to ground play components

Notes:

N/A

Recommended Solution:

Add ground play elements.

Alternate Solution:

N/A

Item #:

5

Lake Redstone
County Park

Code:

206.2.1



Observed Deficiency:

Accessible route missing

Notes:

Route doesn't extend to pay station. Maximum forward reach 10" beyond edge of pavement or obstruction.

Recommended Solution:

Modify or replace route.

Alternate Solution:

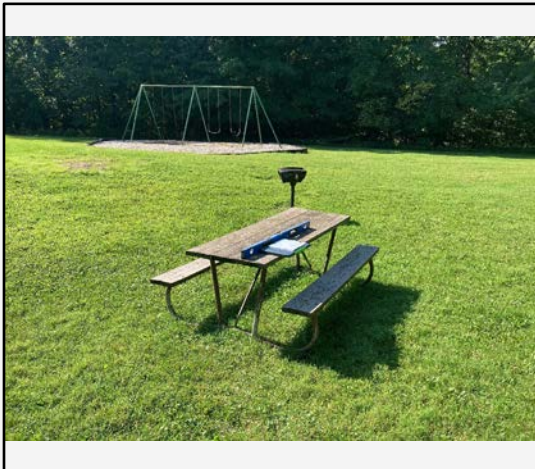
Add signage identifying alternative accessible feature.

Item #:

6

Lake Redstone
County Park

Code:



Observed Deficiency:

Other

Notes:

Tables are not accessible type

Recommended Solution:

Add route and modify or replace picnic table with one of an accessible type.

Alternate Solution:

N/A

Item #:

7

Lake Redstone
County Park

Code:

206.2.1



Observed Deficiency:

Accessible route missing

Notes:

Grill is not accessible type.

Recommended Solution:

Replace with accessible type.

Alternate Solution:

N/A

Item #:

8

Lake Redstone
County Park

Code:

206, 302



Observed Deficiency:

Accessible route has lips that exceed 1/4-inch

Notes:

Replace edging at access point.

Recommended Solution:

Modify transition or threshold (< 1/4" lip).

Alternate Solution:

N/A

Item #:

9

Lake Redstone
County Park

Code:

206, 240, 1008



Observed Deficiency:

Playground does not have a proper transfer system

Notes:

Surfacing exceeds maximum transfer platform height. Add additional surfacing or replace transfer platform.

Recommended Solution:

Modify playground surfacing at transfer element.

Alternate Solution:

N/A

Item #:

10

Lake Redstone
County Park

Code:

206.2.1



Observed Deficiency:

Accessible route missing

Notes:

No accessible route to beach. Dam extends to edge of beach. Route from parking needs to be addressed first.

Recommended Solution:

Add accessible route.

Alternate Solution:

Add signage identifying alternative accessible feature.

Item #:

11

Lake Redstone
County Park

Code:

208.2-3



Observed Deficiency:

Accessible parking missing or improperly located

Notes:

N/A

Recommended Solution:

Add accessible space and sign properly.

Alternate Solution:

Add signage identifying alternative accessible feature.

Item #:

B1.1

Lake Redstone
County Park

Pit Toilet
Building - ADA

Code:

404



Observed Deficiency:

Entry

Notes:

Exterior approach walk at door is irregular, too small and has vertical transition to floor greater than 1/4" at some points.

Recommended Solution:

Add new insulated (minimum 48"x48") concrete floating slab with maximum 1/50 slope. Connected to an accessible site route.

Alternate Solution:

N/A

Item #:

B1.2

Lake Redstone
County Park

Pit Toilet
Building - ADA

Code:

703



Observed Deficiency:

Signage

Notes:

Wall mounted accessible room sign at entry door is missing.

Recommended Solution:

Add ADA room sign.

Alternate Solution:

N/A

Item #:

B1.3

Lake Redstone
County Park

Pit Toilet
Building - ADA

Code:

404



Observed Deficiency:

Entry

Notes:

Door lever handle is not functioning and door does not easily close.

Recommended Solution:

Replace door handle and adjust door.

Alternate Solution:

N/A

Item #:

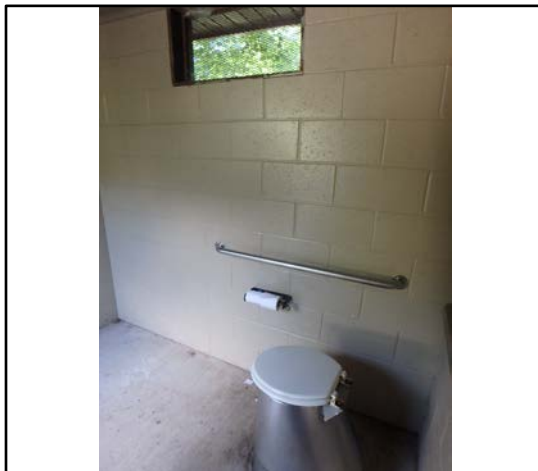
B1.4

Lake Redstone
County Park

Pit Toilet
Building - ADA

Code:

212, 213, 601-610



Observed Deficiency:

Restroom

Notes:

The vertical toilet grab bar (under ANSI 117.1) is not provided. This is not required under ADA. Thus this is optional for existing

Recommended Solution:

Optional: Add grab bar.

Alternate Solution:

N/A

Item #:

B2.1

Lake Redstone
County Park

Toilet/Changing
Buildings -
Mens/Womens

Code:

212, 213, 601-610



Observed Deficiency:

Restroom

Notes:

Building is not accessible, but nearby West Pit Toilet Building is.

Recommended Solution:

Add signage directing users to nearest accessible facility.

Alternate Solution:

N/A

Item #:

B2.2

Lake Redstone
County Park

Toilet/Changing
Buildings -
Mens/Womens

Code:

212, 213, 601-610



Observed Deficiency:

Restroom

Notes:

Changing bench is not accessible, and this building is not on an accessible route.

Recommended Solution:

Construct or remodel to create an accessible changing room OR consider removing the deteriorated changing areas all together.

Alternate Solution:

Add signage identifying alternative accessible feature.

Item #:

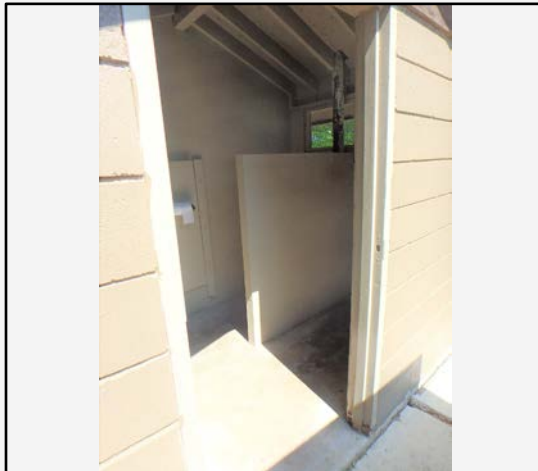
B2.3

Lake Redstone
County Park

Toilet/Changing
Buildings -
Mens/Womens

Code:

703



Observed Deficiency:

Signage

Notes:

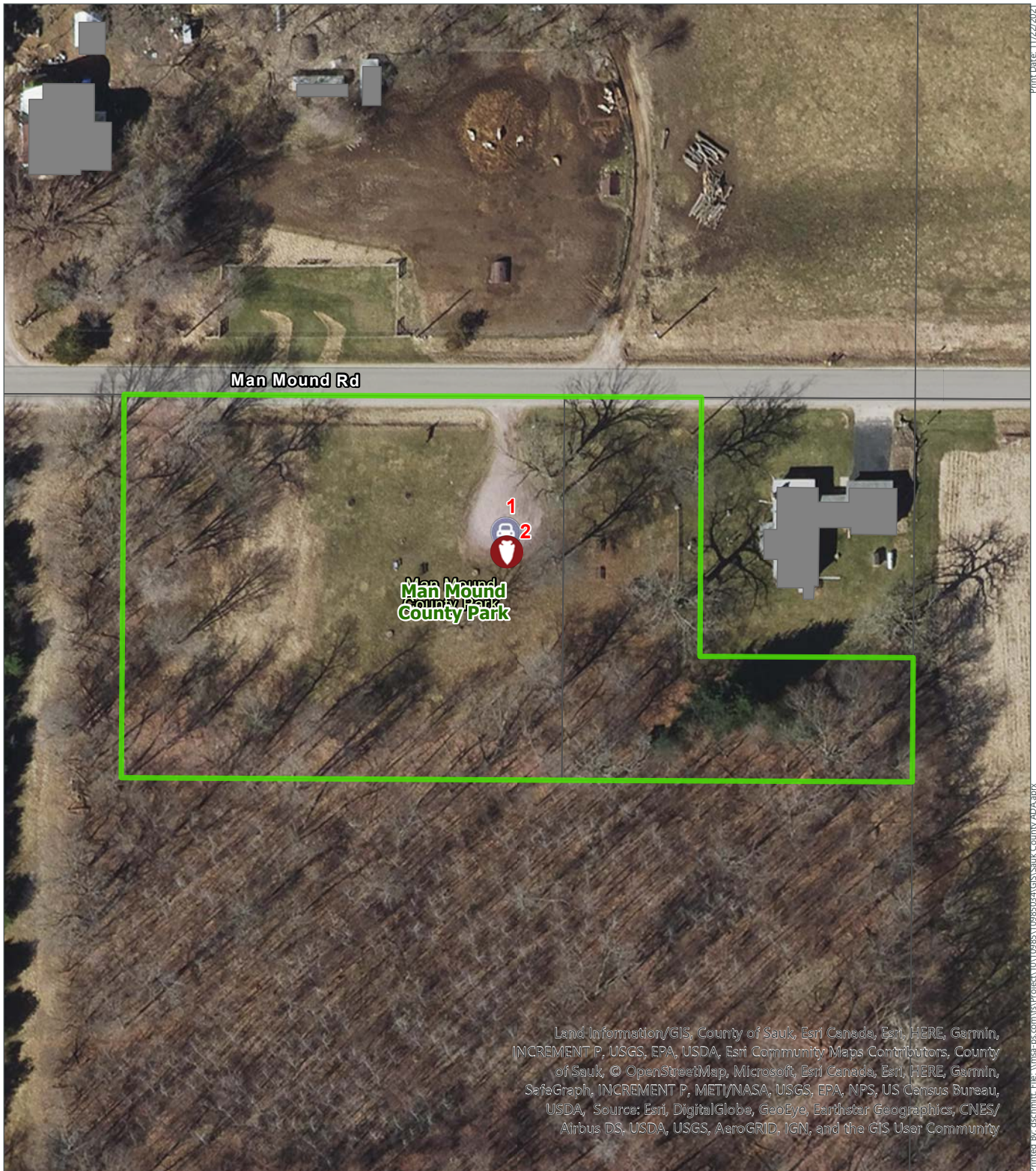
Wall mounted accessible room signs at entry door is missing.

Recommended Solution:

Add ADA room sign.

Alternate Solution:

N/A



Print Date: 11/22/2021
Printed by: dscrmitc; File: wisn-pa-com\wisn\project\1010985\10985\GIS\Sauk County ADA.aprx

Land Information/GIS, County of Sauk, Esri Canada, Esri, HERE, Garmin, INCREMENT P, USGS, EPA, USDA, Esri Community Maps Contributors, County of Sauk, © OpenStreetMap, Microsoft, Esri Canada, Esri, HERE, Garmin, SafeGraph, INCREMENT P, METI/NASA, USGS, EPA, NPS, US Census Bureau, USDA, Source: Esri, DigitalGlobe, GeoEye, Earthstar Geographics, CNES/Airbus DS, USDA, USGS, AeroGRID, IGN, and the GIS User Community



Data Sources:
Sauk County
State of Wisconsin
Esri



- Sauk County Parks
- Trails and Paths
- Other Building
- Other Parks
- Recreation Buildings

6: Man Mound County Park

ADA Facility Audit

Sauk County, WI

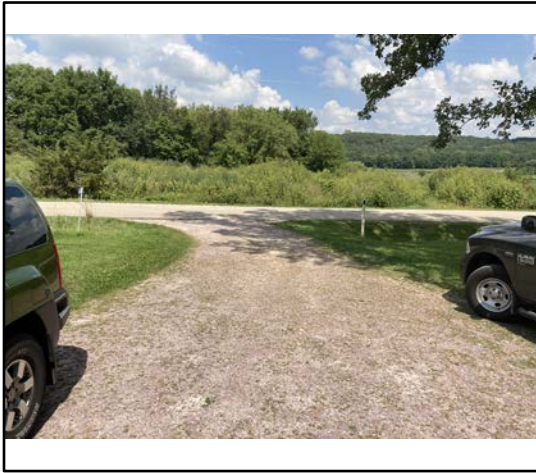
Item #:

1

Man Mound
County Park

Code:

208.2-3



Observed Deficiency:

Accessible parking missing or improperly located

Notes:

Existing turn around does not provide space for proper parking stalls. Site is on national register of historic places.

Recommended Solution:

No apparent solution.

Alternate Solution:

N/A

Item #:

2

Man Mound
County Park

Code:

206.2.1



Observed Deficiency:

Accessible route missing

Notes:

Site is a national historic landmark.

Recommended Solution:

No apparent solution.

Alternate Solution:

Offer alternative accomodation such as audio tour or augmented reality interface.



Data Sources:
Sauk County
State of Wisconsin
Esri



7: Mirror Lake Dam (Timme's Mill)

ADA Facility Audit

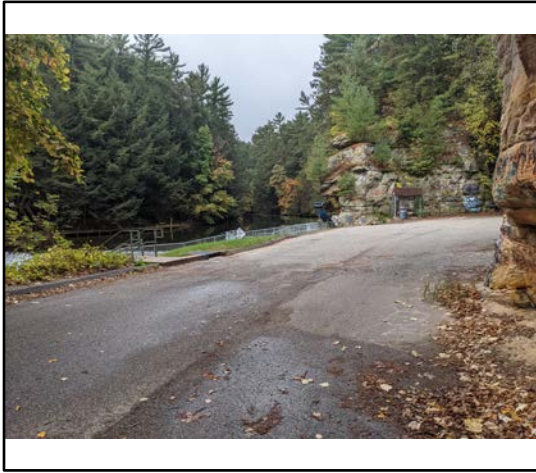
Sauk County, WI

- Sauk County Parks
- Trails and Paths
- Other Building
- Other Parks
- Recreation Buildings

Item #:

1

Timme's Mill



Observed Deficiency:

Accessible parking missing or improperly located

Notes:

No pavement markings. Remark parking for accessible parking stall and add appropriate signage.

Recommended Solution:

Add a minimum of one van accessible parking stall.

Alternate Solution:

Adjust curbline to accomodate accessible parking stall (10-ft width required) to allow for emergency vehicle access to dam/launch.

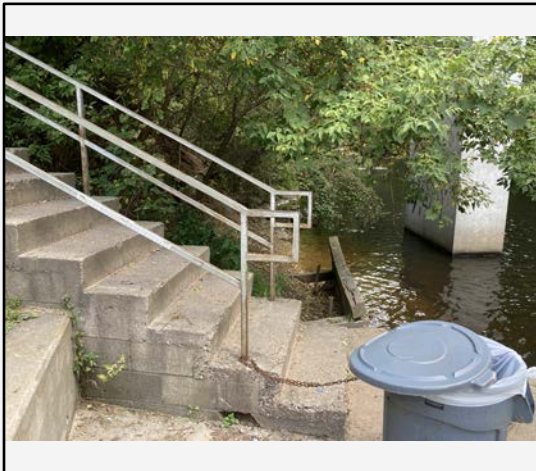
Code:

208.2-3

Item #:

2

Timme's Mill



Observed Deficiency:

Stairs are missing handrails or handrails are not compliant

Notes:

Extend handrails minimum 1' past last riser.

Recommended Solution:

Modify or replace route.

Alternate Solution:

N/A

Code:

405.8

Item #:

3

Timme's Mill



Observed Deficiency:

Accessible route missing

Notes:

Step up to sidewalk from parking lot. Stairs are only means of egress to fishing area.

Recommended Solution:

Modify or replace route.

Alternate Solution:

Add signage identifying alternative accessible feature.

Code:

206.2.1

Item #:

4

Timme's Mill



Observed Deficiency:

Accessible route slope exceeds 1:20 (5 percent) without Handrails

Notes:

Access must be maintained to conveyer.

Recommended Solution:

Add accessible route.

Alternate Solution:

Add signage identifying alternative accessible feature.

Code:

206, 403

Item #:

5

Timme's Mill

Code:



Observed Deficiency:

Other

Notes:

Existing boat launch is not accessible. Add transfer system.

Recommended Solution:

Replace with accessible type.

Alternate Solution:

Add signage identifying alternative accessible feature.



APPENDIX - A



Data Sources:
Sauk County
State of Wisconsin
Esri



- Sauk County Parks
- Trails and Paths
- Other Building
- Other Parks
- Recreation Buildings

8: North End Boat Landing

ADA Facility Audit

Sauk County, WI

Item #:

1

North End Boat Landing

Code:

208, 502.2-3



Observed Deficiency:

Accessible parking improperly marked

Notes:

No marked access aisle. (11ft stall and 5ft access aisle preferred).

Recommended Solution:

Add or remark for an accessible parking stall.

Alternate Solution:

N/A

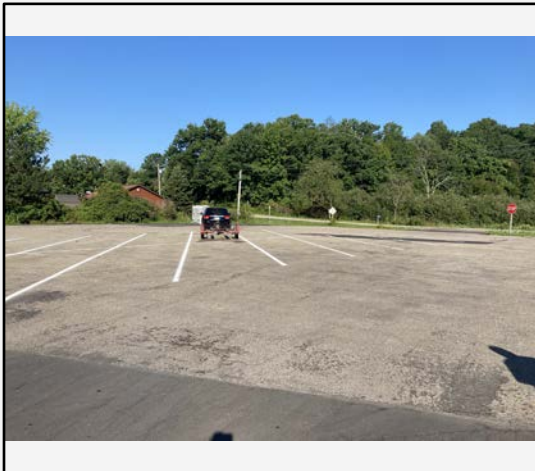
Item #:

2

North End Boat Landing

Code:

208.2-3



Observed Deficiency:

Accessible parking missing or improperly located

Notes:

No boat trailer stall marked. (11ft stall and 5ft access aisle preferred).

Recommended Solution:

Modify pavement marking.

Alternate Solution:

N/A

Item #:

3

North End Boat Landing

Code:

206, 302



Observed Deficiency:

Accessible route has lips that exceed 1/4-inch

Notes:

Raised asphalt and bowed deck board

Recommended Solution:

Modify or replace route.

Alternate Solution:

N/A

Item #:

4

North End Boat Landing

Code:

206.2.1



Observed Deficiency:

Accessible route missing

Notes:

No route to courtsey pier.

Recommended Solution:

Add accessible route.

Alternate Solution:

Add signage identifying alternative accessible feature.

Item #:

5

North End Boat Landing

Code:

206, 302.1



Observed Deficiency:

Accessible route is not firm, stable, and slip-resistant

Notes:

Grass in pavement at Pay station off parking lot .

Recommended Solution:

Maintenance - Clear vegetation from route.

Alternate Solution:

Relocate features to an accessible route.

Item #:

6

North End Boat Landing

Code:

206, 302.3



Observed Deficiency:

Accessible route has gaps that exceed 1/2-inch

Notes:

Lip at gangway entrance. Regrade or modify the transition plate.

Recommended Solution:

Modify or replace route.

Alternate Solution:

N/A

Item #:

7

North End Boat Landing

Code:

206, 302



Observed Deficiency:

Accessible route has lips that exceed 1/4-inch

Notes:

Adjust panels to align pier or add transition plate.

Recommended Solution:

Modify or replace route.

Alternate Solution:

N/A

Item #:

8

North End Boat Landing

Code:

206, 502.4



Observed Deficiency:

Accessible route cross-slope exceeds 1:48 (2 percent)

Notes:

Adjust pier to be level.

Recommended Solution:

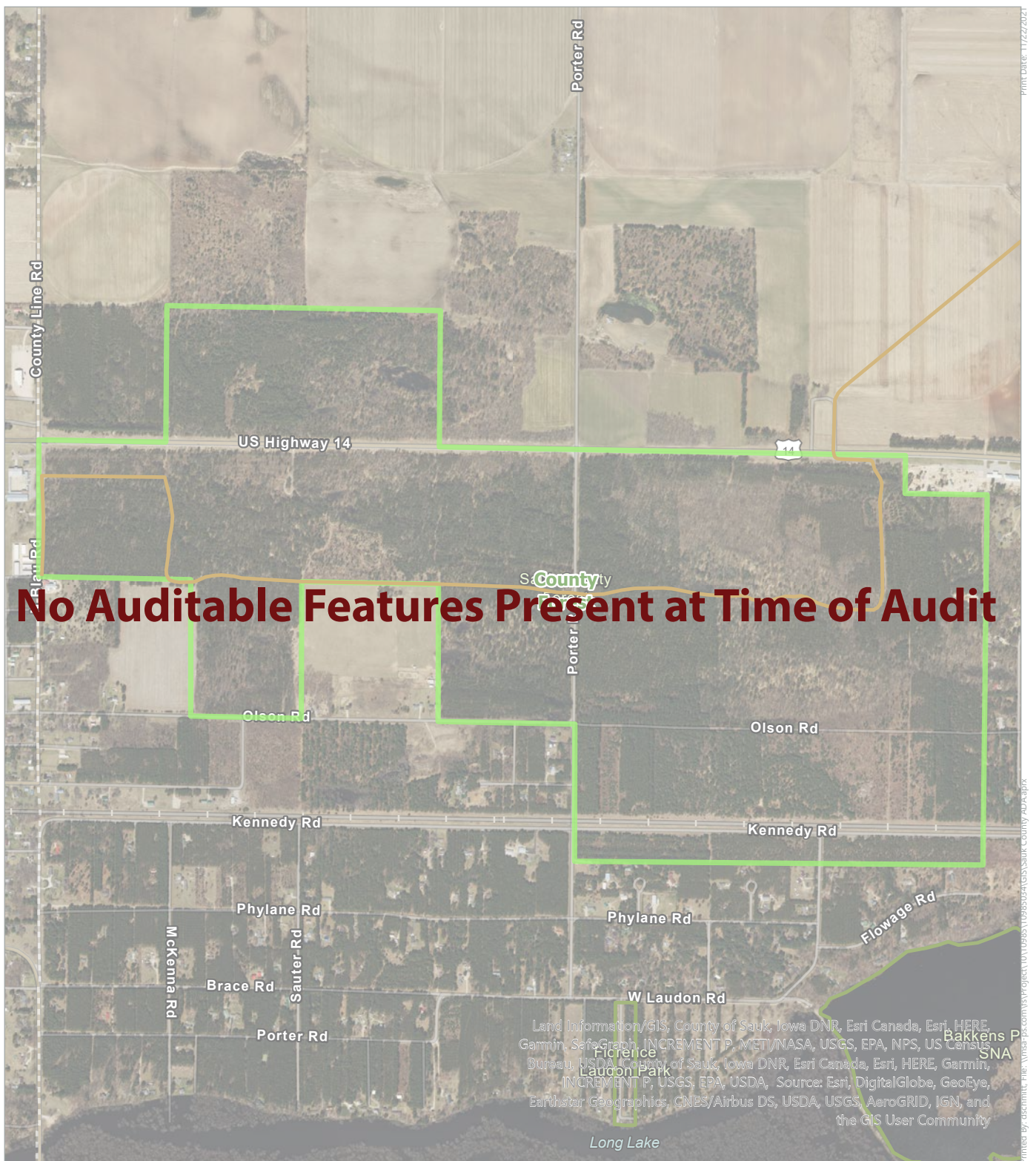
Modify or replace route.

Alternate Solution:

N/A



APPENDIX - A



Data Sources:
 Sauk County
 State of Wisconsin
 Esri



- Sauk County Parks
- Trails and Paths
- Other Parks

9: Sauk County Forest

ADA Facility Audit

Sauk County, WI



APPENDIX - A



Print Date: 11/22/2021
 Printed by: dscrmh1c:\na\sa\p\com\sys\project\10\10985\10985usa\GIS\Sauk County\AUA.aprx



Data Sources:
 Sauk County
 State of Wisconsin
 Esri



- Sauk County Parks
- Trails and Paths
- Recreation Buildings
- Other Building
- Other Parks

10: Summer Oaks Boat Landing

ADA Facility Audit

Sauk County, WI

Item #:

1

Summer Oaks
Boat Landing

Code:

208.2-3



Observed Deficiency:

Accessible parking missing or improperly located

Notes:

No ADA parking identified. No pavement markings present.

Recommended Solution:

Add accessible space and sign properly.

Alternate Solution:

N/A

Item #:

2

Summer Oaks
Boat Landing

Code:



Observed Deficiency:

Other

Notes:

Portable restroom is not accessible type .

Recommended Solution:

Replace with accessible type.

Alternate Solution:

N/A

Item #:

3

Summer Oaks
Boat Landing

Code:

206, 403



Observed Deficiency:

Accessible route slope exceeds 1:20 (5 percent) without Handrails

Notes:

Transition to pier is greater than 8%. Extend transition plate or regrade pavement to pier. Route from parking lot is not accessible.

Recommended Solution:

Modify or replace route.

Alternate Solution:

Add signage identifying alternative accessible feature.

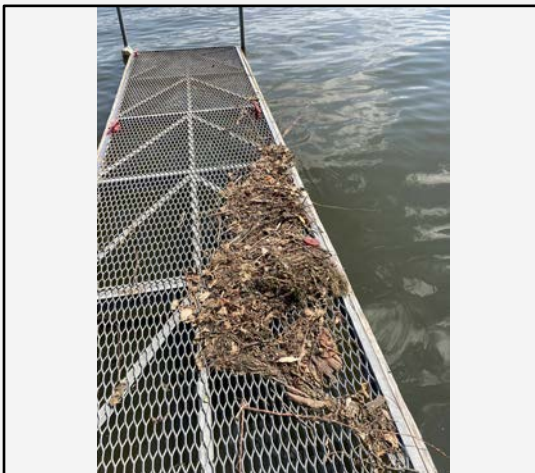
Item #:

4

Summer Oaks
Boat Landing

Code:

206, 302.1



Observed Deficiency:

Accessible route is not firm, stable, and slip-resistant

Notes:

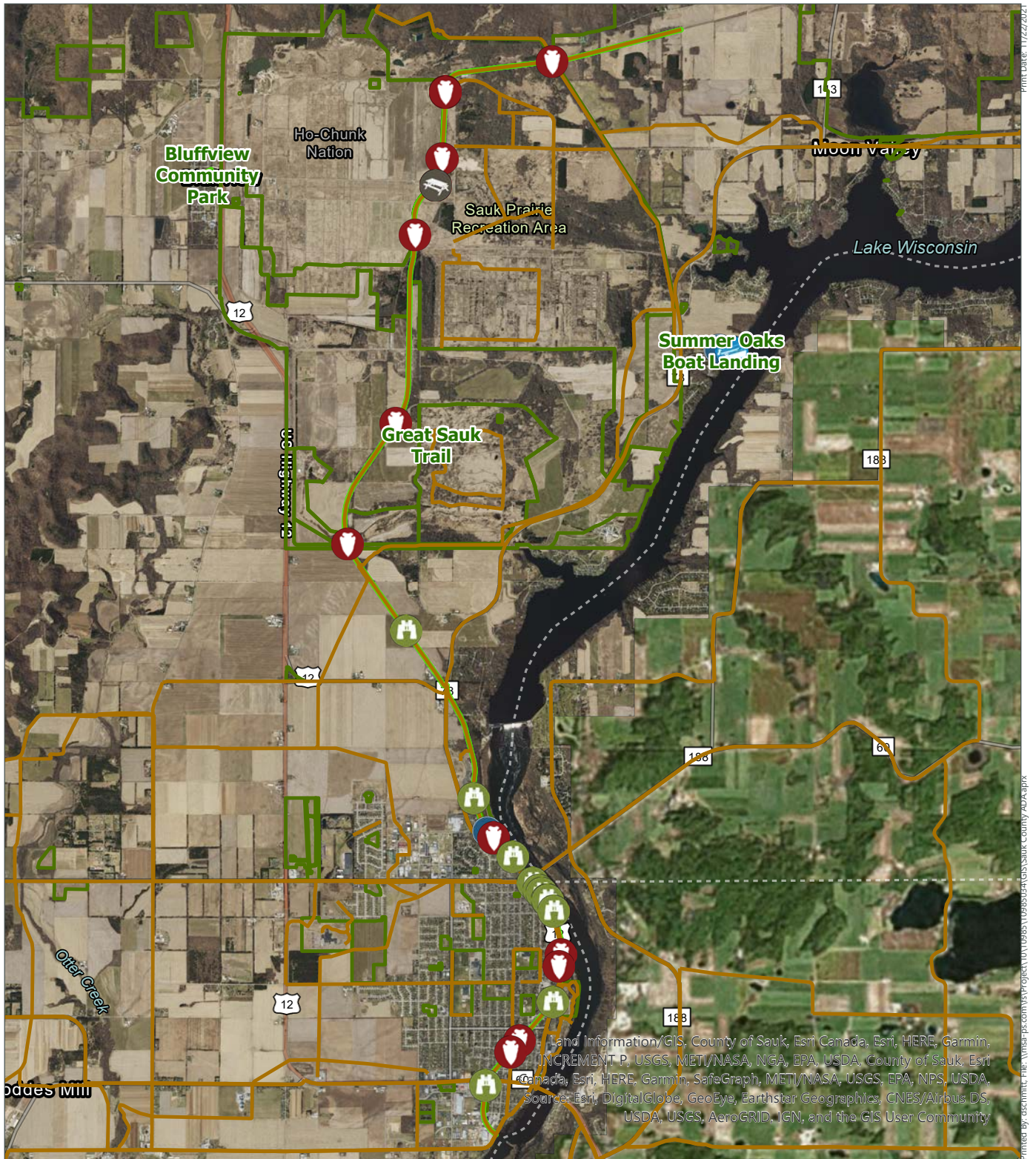
Debris on pier.

Recommended Solution:

Maintenance - Clear debris from route.

Alternate Solution:

N/A






Data Sources:
Sauk County
State of Wisconsin
Esri



11: The Great Sauk State Trail

ADA Facility Audit

Sauk County, WI

-  Sauk County Parks
-  Trails and Paths
-  Other Parks

Item #:

3

Great Sauk Trail



Observed Deficiency:

Adjacent companion area (30-inch wide x 48-inch deep) is not provided.

Notes:

Move bench on pad.

Recommended Solution:

Relocate bench.

Alternate Solution:

N/A

Code:

206

Item #:

4

Great Sauk Trail



Observed Deficiency:

Accessible route has lips that exceed 1/4-inch

Notes:

Weeds growing in pavement joint.

Recommended Solution:

Maintenance - Clear vegetation from route.

Alternate Solution:

N/A

Code:

206, 302

Item #:

5

Great Sauk Trail

Code:

1011.2.1, 1011.4, 306



Observed Deficiency:

Other

Notes:

Table is temporary. Not located on pad - relocate or remove.

Recommended Solution:

Add or modify a minimum of one picnic table to be of the accessible type.

Alternate Solution:

N/A

Item #:

6

Great Sauk Trail

Code:

206, 302.1



Observed Deficiency:

Accessible route is not firm, stable, and slip-resistant

Notes:

Debris on pavement.

Recommended Solution:

Maintenance - Clear debris from route.

Alternate Solution:

N/A

Item #:

7

Great Sauk Trail

Code:

206



Observed Deficiency:

Adjacent companion area (30-inch wide x 48-inch deep) is not provided.

Notes:

Extend pad under bench.

Recommended Solution:

Add companion seating area (min 30in x 48in).

Alternate Solution:

N/A

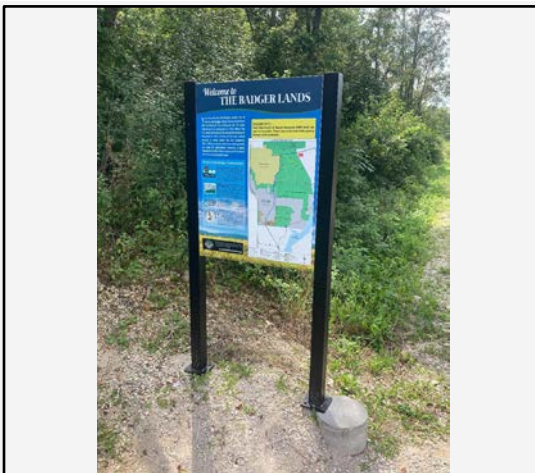
Item #:

8

Great Sauk Trail

Code:

206.2.1



Observed Deficiency:

Accessible route missing

Notes:

Add concrete pad or level gravel (2%) or remount sign at same elevation as path.

Recommended Solution:

Add accessible route.

Alternate Solution:

N/A

Item #:

9

Great Sauk Trail



Code:

206

Observed Deficiency:

Adjacent companion area (30-inch wide x 48-inch deep) is not provided.

Notes:

Move bench to allow for appropriate companion area.

Recommended Solution:

Relocate bench.

Alternate Solution:

N/A

Item #:

10

Great Sauk Trail



Code:

206.2.1

Observed Deficiency:

Accessible route missing

Notes:

Gravel must be maintained regularly to be accessible.

Recommended Solution:

Maintenance - On-going.

Alternate Solution:

N/A

Item #:

11

Great Sauk Trail



Code:

206

Observed Deficiency:

Adjacent companion area (30-inch wide x 48-inch deep) is not provided.

Notes:

Gravel is below path elevation. Add gravel to level companion area. Gravel must be maintained to be accessible.

Recommended Solution:

Maintenance - On-going.

Alternate Solution:

N/A

Item #:

12

Great Sauk Trail



Code:

206

Observed Deficiency:

Adjacent companion area (30-inch wide x 48-inch deep) is not provided.

Notes:

Gravel must be maintained regularly to be accessible.

Recommended Solution:

Add companion seating area (min 30in x 48in).

Alternate Solution:

N/A

Item #:

13

Great Sauk Trail

Code:

206, 302.1



Observed Deficiency:

Accessible route is not firm, stable, and slip-resistant

Notes:

Trail Pay Station. Pave gravel up to pay station.

Recommended Solution:

Modify or replace route.

Alternate Solution:

N/A

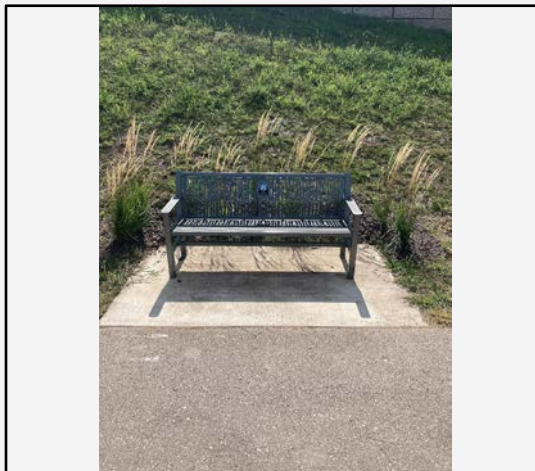
Item #:

14

Great Sauk Trail

Code:

206



Observed Deficiency:

Adjacent companion area (30-inch wide x 48-inch deep) is not provided.

Notes:

Modify placement of bench on pad or add to pad.

Recommended Solution:

Relocate bench.

Alternate Solution:

N/A

Item #:

15

Great Sauk Trail

Code:

206



Observed Deficiency:

Adjacent companion area (30-inch wide x 48-inch deep) is not provided.

Notes:

Modify placement of bench on pad or add to pad.

Recommended Solution:

Relocate bench.

Alternate Solution:

N/A

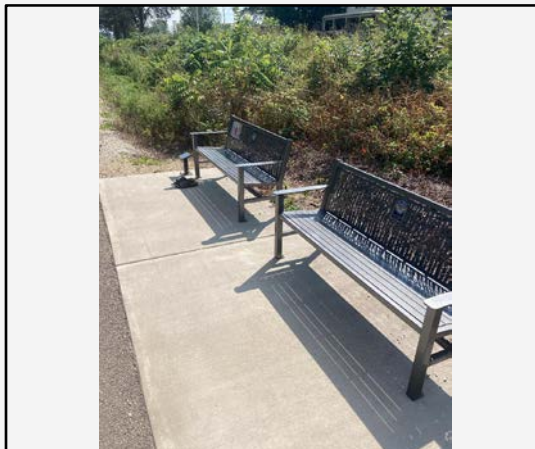
Item #:

16

Great Sauk Trail

Code:

206



Observed Deficiency:

Adjacent companion area (30-inch wide x 48-inch deep) is not provided.

Notes:

Modify placement of bench on pad or add to pad.

Recommended Solution:

Relocate bench.

Alternate Solution:

N/A

Item #:

17

Great Sauk Trail

Code:

206.2.1



Observed Deficiency:

Accessible route missing

Notes:

No route from trail to sculpture. Add a route and staging area or relocate sculpture.

Recommended Solution:

Add accessible route.

Alternate Solution:

Classify as non-interactive art feature, no accommodation required.



APPENDIX - A



Data Sources:
 Sauk County
 State of Wisconsin
 Esri



- Sauk County Parks
- Trails and Paths
- Other Parks

13: White Mound County Park

ADA Facility Audit

Sauk County, WI



APPENDIX - A



Data Sources:
 Sauk County
 State of Wisconsin
 Esri



14: White Mound County Park - Campground

ADA Facility Audit

- Sauk County Parks
- Trails and Paths
- Recreation Buildings
- Other Building
- Other Parks

Sauk County, WI



Data Sources:
Sauk County
State of Wisconsin
Esri



15: White Mound County Park - North Lake

ADA Facility Audit

- Sauk County Parks
- Trails and Paths
- Other Building
- Other Parks
- Recreation Buildings

Sauk County, WI



Data Sources:
 Sauk County
 State of Wisconsin
 Esri



16: White Mound County Park - South Lake

- Sauk County Parks
- Trails and Paths
- Recreation Buildings
- Other Building
- Other Parks

ADA Facility Audit

Sauk County, WI

Item #:

1

White Mound
County Park

Code:

208, 502.2-3



Observed Deficiency:

Accessible parking improperly marked

Notes:

Raise sign to 60"

Recommended Solution:

Modify sign placement (min. 60in above grade).

Alternate Solution:

N/A

Item #:

2

White Mound
County Park

Code:

206, 403



Observed Deficiency:

Accessible route slope exceeds 1:20 (5 percent) without Handrails

Notes:

Replace ~50' of path

Recommended Solution:

Modify or replace route.

Alternate Solution:

N/A

Item #:

3

White Mound
County Park

Code:

1011.2.1, 1011.4, 306



Observed Deficiency:

Other

Notes:

No accessible tables or routes. Typ of 6

Recommended Solution:

Add route and modify or replace picnic table with one of an accessible type.

Alternate Solution:

Relocate features to an accessible route.

Item #:

4

White Mound
County Park

Code:

206.2.1



Observed Deficiency:

Accessible route missing

Notes:

No route or companion area

Recommended Solution:

Add route and companion seating area (min 30in x 48in).

Alternate Solution:

Relocate features to an accessible route.

Item #:

5

White Mound
County Park

Code:

206.2.1



Observed Deficiency:

Accessible route missing

Notes:

No route to grill, typ of 2

Recommended Solution:

Add accessible route.

Alternate Solution:

Relocate features to an accessible route.

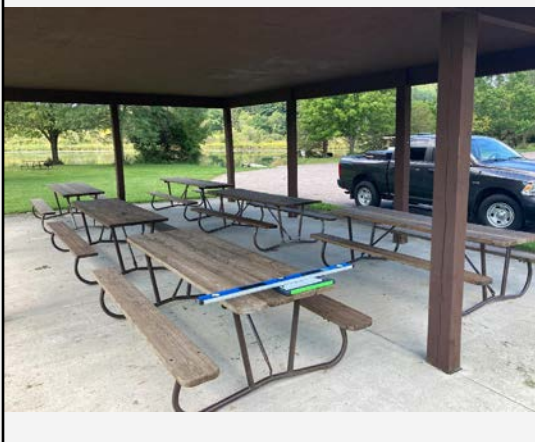
Item #:

6

White Mound
County Park

Code:

1011.2.1, 1011.4, 306



Observed Deficiency:

Other

Notes:

No accessible tables provided, typ of 6

Recommended Solution:

Modify a minimum of one picnic table to the accessible type.

Alternate Solution:

Relocate features to an accessible route.

Item #:

7

White Mound
County Park

Code:

206, 302



Observed Deficiency:

Accessible route has lips that exceed 1/4-inch

Notes:

Weeds in gap between trail and sidewalk

Recommended Solution:

Modify or replace route.

Alternate Solution:

N/A

Item #:

8

White Mound
County Park

Code:

208.2-3



Observed Deficiency:

Accessible parking missing or improperly located

Notes:

No pavement markings.

Recommended Solution:

Add a minimum of one van accessible parking stall.

Alternate Solution:

N/A

Item #:

9

White Mound
County Park

Code:

206, 302



Observed Deficiency:

Accessible route has lips that exceed 1/4-inch

Notes:

Add transition plate or regrade pavement.

Recommended Solution:

Modify transition or threshold (< 1/4" lip).

Alternate Solution:

N/A

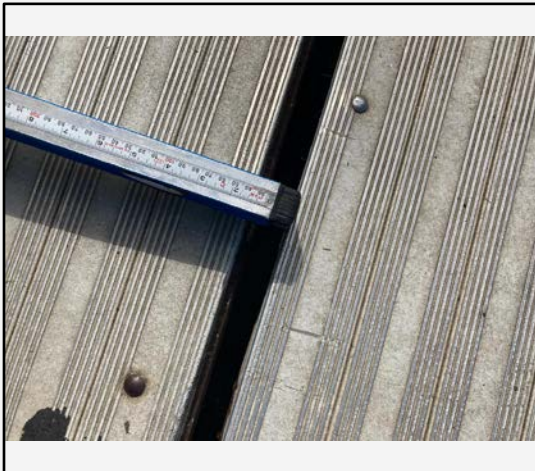
Item #:

10

White Mound
County Park

Code:

206, 302.3



Observed Deficiency:

Accessible route has gaps that exceed 1/2-inch

Notes:

Adjust pier decking at hinge point.

Recommended Solution:

Modify or replace route.

Alternate Solution:

Add filler or transition plate.

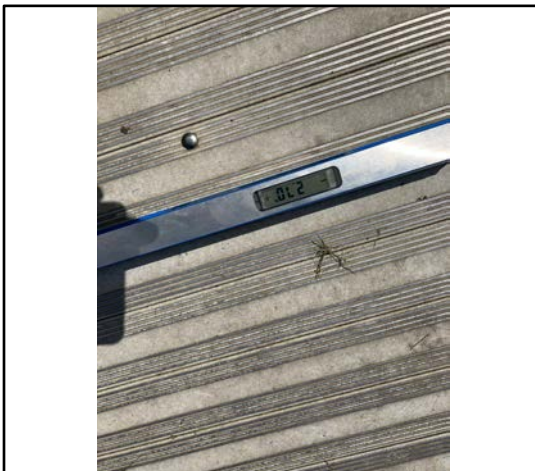
Item #:

11

White Mound
County Park

Code:

206, 502.4



Observed Deficiency:

Accessible route cross-slope exceeds 1:48 (2 percent)

Notes:

Adjust pier cross slope.

Recommended Solution:

Modify or replace route.

Alternate Solution:

N/A

Item #:

12

White Mound
County Park

Code:

206, 406.1, 405.3



Observed Deficiency:

Curb ramp cross-slope exceeds 1:48 (2 percent)

Notes:

ADA camp stalls near ADA restroom.

Recommended Solution:

Modify or replace route.

Alternate Solution:

Relocate features to a suitable location.

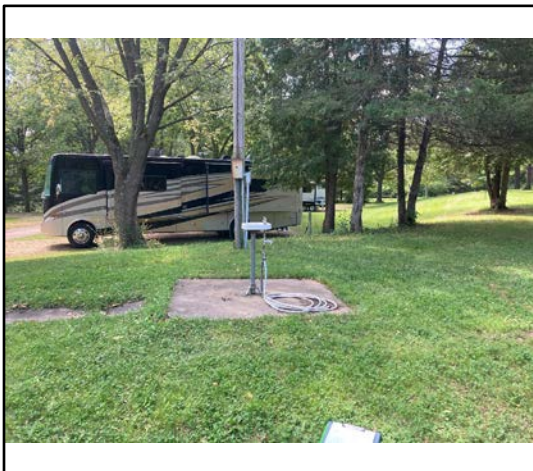
Item #:

13

White Mound
County Park

Code:

602



Observed Deficiency:

Other

Notes:

Drinking fountain is not accessible type and not an accessible route.

Recommended Solution:

Replace with accessible type.

Alternate Solution:

Add signage identifying alternative accessible feature.

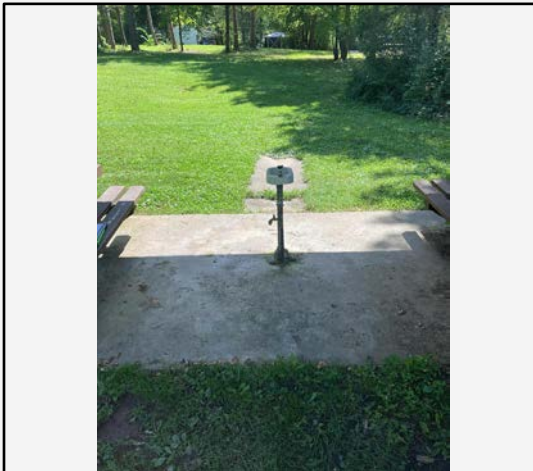
Item #:

14

White Mound
County Park

Code:

602



Observed Deficiency:

Other

Notes:

Drinking fountain is not accessible type and not an accessible route.

Recommended Solution:

Replace with accessible type.

Alternate Solution:

Add signage identifying alternative accessible feature.

Item #:

15

White Mound
County Park

Code:

206.2.1



Observed Deficiency:

Accessible route missing

Notes:

Route does not extend to playground border.

Recommended Solution:

Add accessible route.

Alternate Solution:

N/A

Item #:

16

White Mound
County Park

Code:



Observed Deficiency:

Other

Notes:

No route or companion area. Combine with route to playground.

Recommended Solution:

Add route and companion seating area (min 30in x 48in).

Alternate Solution:

Relocate features to an accessible route.

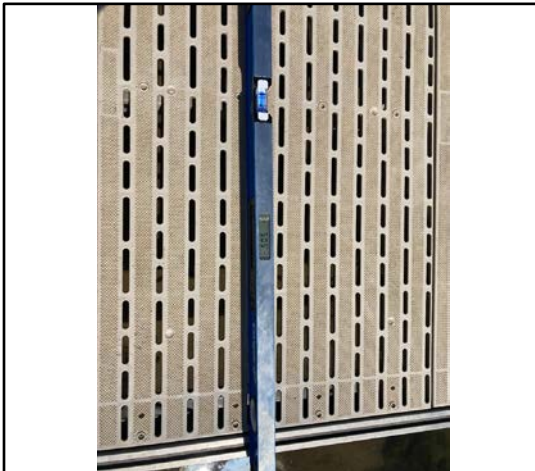
Item #:

17

White Mound
County Park

Code:

206, 502.4



Observed Deficiency:

Accessible route cross-slope exceeds 1:48 (2 percent)

Notes:

Pier leaning, adjust pier.

Recommended Solution:

Modify or replace route.

Alternate Solution:

N/A

Item #:

18

White Mound
County Park

Code:

206, 403



Observed Deficiency:

Accessible route slope exceeds 1:20 (5 percent) without Handrails

Notes:

Accessible beach mat exceeds 5%. Regrade if allowed by DNR.

Recommended Solution:

Modify or replace route.

Alternate Solution:

Repair ruts in mat surface and allow slope to remain.

Item #:

19

White Mound
County Park

Code:

206, 403



Observed Deficiency:

Accessible route slope exceeds 1:20 (5 percent) without Handrails

Notes:

~40'

Recommended Solution:

Modify or replace route.

Alternate Solution:

N/A

Item #:

20

White Mound
County Park

Code:

206.2.1



Observed Deficiency:

Accessible route missing

Notes:

Tables are not accessible type and there's no accessible route, typ of 13

Recommended Solution:

Add route and modify or replace picnic table with one of an accessible type.

Alternate Solution:

Relocate features to an accessible route.

Item #:

21

White Mound
County Park

Code:

206.2.1



Observed Deficiency:

Accessible route missing

Notes:

No accessible route to fire pit or grill. Add gravel path.

Recommended Solution:

Add accessible route.

Alternate Solution:

Relocate features to an accessible route.

Item #:

22

White Mound
County Park

Code:

206.2.1



Observed Deficiency:

Accessible route missing

Notes:

County is planning for ADA pad.

Recommended Solution:

Add route and modify or replace picnic table with one of an accessible type.

Alternate Solution:

N/A

Item #:

23

White Mound
County Park

Code:

1011.2.1, 1011.4, 306



Observed Deficiency:

Other

Notes:

No accessible tables, route exceeds 5%

Recommended Solution:

Add route and modify or replace picnic table with one of an accessible type.

Alternate Solution:

Relocate features to an accessible route.

Item #:

24

White Mound
County Park

Code:

206.2.1



Observed Deficiency:

Accessible route missing

Notes:

Move accessible stall to west end of lot and add route to playground.

Recommended Solution:

Add accessible route.

Alternate Solution:

Add signage identifying alternative accessible feature.

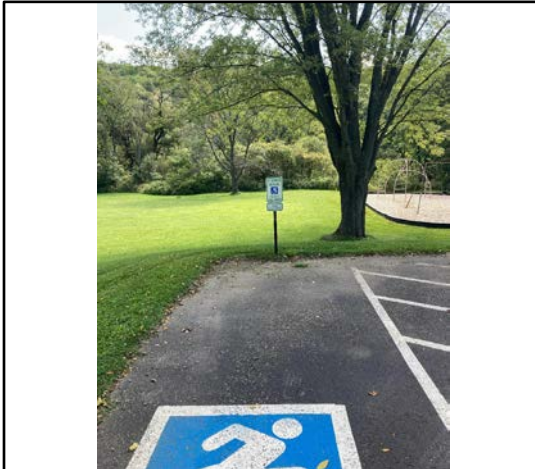
Item #:

25

White Mound
County Park

Code:

208.2-3



Observed Deficiency:

Accessible parking missing or improperly located

Notes:

Stall is 8', access aisle 6'. Minimum of 8' required.

Recommended Solution:

Modify pavement marking.

Alternate Solution:

N/A

Item #:

26

White Mound
County Park

Code:

206.2.1



Observed Deficiency:

Accessible route missing

Notes:

No route to tables tables are not accessible type, typ of 4

Recommended Solution:

Add route and modify or replace picnic table with one of an accessible type.

Alternate Solution:

Relocate features to an accessible route.

Item #:

27

White Mound
County Park

Code:



Observed Deficiency:

Other

Notes:

Not accessible type. Replace and add new route.

Recommended Solution:

Replace with accessible type.

Alternate Solution:

Add signage identifying alternative accessible feature.

Item #:

28

White Mound
County Park

Code:

206, 302.1



Observed Deficiency:

Accessible route is not firm, stable, and slip-resistant

Notes:

Weeds growing on path. Remove weeds and fill cracks.

Recommended Solution:

Modify or replace asphalt.

Alternate Solution:

N/A

Item #:

29

White Mound
County Park

Code:

206, 302



Observed Deficiency:

Accessible route has lips that exceed 1/4-inch

Notes:

Placement is cracking. Repair and restripe parking stall.

Recommended Solution:

Modify or replace asphalt.

Alternate Solution:

N/A

Item #:

30

White Mound
County Park

Code:

208, 502.2-3



Observed Deficiency:

Accessible parking improperly marked

Notes:

N/A

Recommended Solution:

Modify sign placement (min. 60in above grade).

Alternate Solution:

N/A

Item #:

31

White Mound
County Park

Code:

208, 502.2-3



Observed Deficiency:

Accessible parking improperly marked

Notes:

N/A

Recommended Solution:

Modify sign placement (min. 60in above grade).

Alternate Solution:

N/A

Item #:

32

White Mound
County Park

Code:

208, 502.2-3



Observed Deficiency:

Accessible parking improperly marked

Notes:

N/A

Recommended Solution:

Modify sign placement (min. 60in above grade).

Alternate Solution:

N/A

Item #:

33

White Mound
County Park

Code:

206.2.1



Observed Deficiency:

Accessible route missing

Notes:

Mowed grass path.

Recommended Solution:

Add accessible route.

Alternate Solution:

Add signage identifying alternative accessible shelter.

Item #:

34

White Mound
County Park

Code:

206.2.1



Observed Deficiency:

Accessible route missing

Notes:

11 tables, 3 ada- 2 grills not on route or accessible type. Combine with route to shelter.

Recommended Solution:

Add accessible route.

Alternate Solution:

Relocate features to an accessible route.

Item #:

35

White Mound
County Park

Code:

206, 240, 1008



Observed Deficiency:

Playground does not have proper ratio of elevated play to ground play components

Notes:

Replace playground.

Recommended Solution:

Add ground play elements.

Alternate Solution:

N/A

Item #:

36

White Mound
County Park



Code:

1011.2.1, 1011.4, 306

Observed Deficiency:

Other

Notes:

N/A

Recommended Solution:

Modify a minimum of one picnic table to the accessible type.

Alternate Solution:

Replace tables with accessible type.

Item #:

37

White Mound
County Park



Code:

206.2.1

Observed Deficiency:

Accessible route missing

Notes:

Extend pavement to water hydrant.

Recommended Solution:

Add accessible route.

Alternate Solution:

N/A

Item #:

38

White Mound
County Park



Code:

206.2.1

Observed Deficiency:

Accessible route missing

Notes:

Route does not extend to pay station.

Recommended Solution:

Add accessible route.

Alternate Solution:

N/A

Item #:

39

White Mound
County Park



Code:

206, 240, 1008

Observed Deficiency:

Playground surfacing does not meet ASTM F1951-99

Notes:

Surfacing is worn and displaced in spots.

Recommended Solution:

Modify or replace playground surfacing.

Alternate Solution:

N/A

Item #:

40

White Mound
County Park

Code:

208, 502.6



Observed Deficiency:

Accessible parking signage missing or improper

Notes:

Mark ADA campsites.

Recommended Solution:

Add accessible space and sign properly.

Alternate Solution:

N/A

Item #:

B1.1

White Mound
County Park

Prairie Smoke
Terrace
(building)

Code:

404



Observed Deficiency:

Entry

Notes:

The interior entry door swing infringes on the maneuvering space for the exterior door, 48" required.

Recommended Solution:

Add automatic door opener at each door.

Alternate Solution:

A. Change swing of doors; B. Short-term: Offer staff assistance for operation - add doorbell at entrance.

Item #:

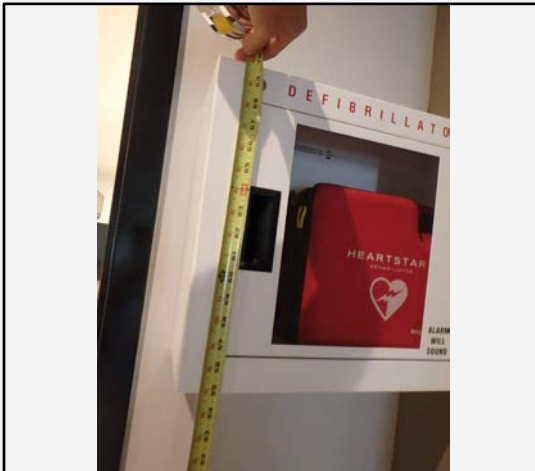
B1.2

White Mound
County Park

Prairie Smoke
Terrace
(building)

Code:

308



Observed Deficiency:

Furnishing

Notes:

Lobby has public AED (defibrillator), shall not be mounted above 48" and shall not infringe on wall aisle with projection beyond 4".

Recommended Solution:

Relocate.

Alternate Solution:

N/A

Item #:

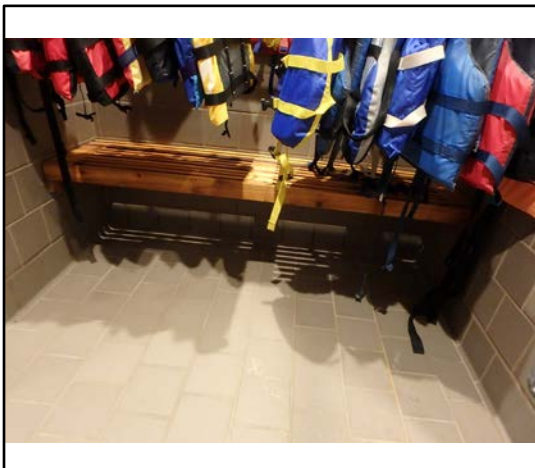
B1.3

White Mound
County Park

Prairie Smoke
Terrace
(building)

Code:

212, 213, 601-610



Observed Deficiency:

Restroom

Notes:

Shower/Changing Room - Changing bench is 15" x 63" without clear floor space at one end. 20"x42" bench required with 30" wide

Recommended Solution:

No apparent solution.

Alternate Solution:

Modify to maximum allowable extent. Reduce bench width to allow for adjacent 30" clear space, note that bench will not meet minimum

Item #:

B1.4

White Mound
County Park

Prairie Smoke
Terrace
(building)

Code:

212, 213, 601-610



Observed Deficiency:

Restroom

Notes:

Shower/Changing Room - Clothes/towel hooks are at higher than 48".

Recommended Solution:

Add one hook at lower height.

Alternate Solution:

N/A

Item #:

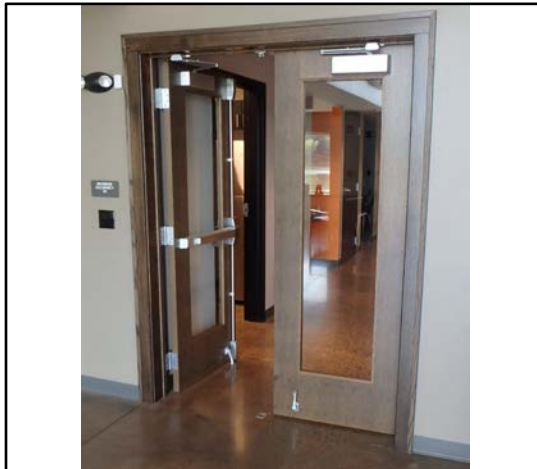
B1.5

White Mound
County Park

Prairie Smoke
Terrace
(building)

Code:

404



Observed Deficiency:

Entry

Notes:

Double Interior Community Room Doors Each door leafs is 30" wide, only one leaf is active with a emergency exist device (push

Recommended Solution:

Replace door leaves with one that is 36" and one that is 24". Reuse most hardware.

Alternate Solution:

A. Add ADA door opener; B. Hold Open Doors during business hours.

Item #:

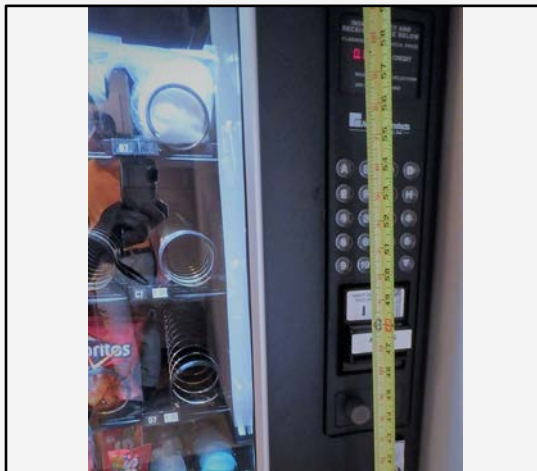
B1.6

White Mound
County Park

Prairie Smoke
Terrace
(building)

Code:

308



Observed Deficiency:

Furnishing

Notes:

Vending Machines - ALL machines have controls above 48".

Recommended Solution:

Replace with accessible machines.

Alternate Solution:

Offer staff assistance for operation.

Item #:

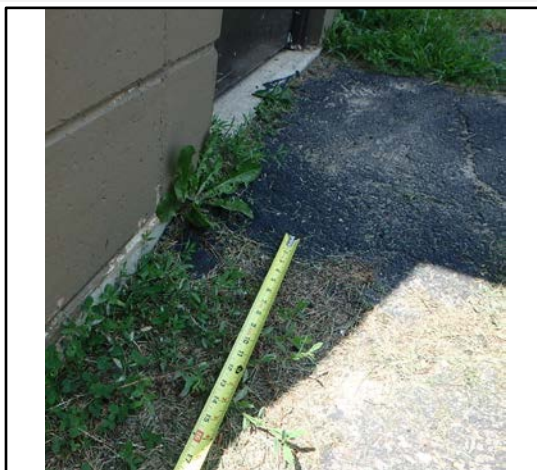
B2.1

White Mound
County Park

Toilet Buildings -
ADA Beach

Code:

404



Observed Deficiency:

Entry

Notes:

Exterior approach walk at door is irregular, too small and has vertical transition to floor greater than 1/4" at some points.

Recommended Solution:

Add new insulated (minimum 48"x48") concrete floating slab with maximum 1/50 slope. Connected to an accessible site route.

Alternate Solution:

N/A

Item #:

B2.2

White Mound
County Park

Toilet Buildings -
ADA Beach

Code:

703



Observed Deficiency:

Signage

Notes:

Wall mounted accessible room sign at entry door is missing.

Recommended Solution:

Add ADA room sign.

Alternate Solution:

N/A

Item #:

B2.3

White Mound
County Park

Toilet Buildings -
ADA Beach

Code:

404



Observed Deficiency:

Entry

Notes:

Door lever handle is not functioning and door does not easily close.

Recommended Solution:

Replace door handle and adjust door.

Alternate Solution:

N/A

Item #:

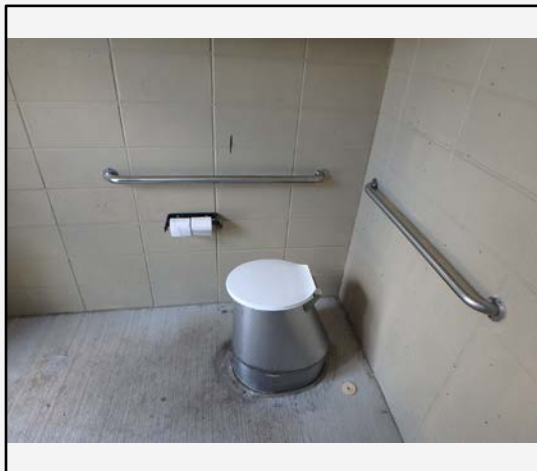
B2.4

White Mound
County Park

Toilet Buildings -
ADA Beach

Code:

212, 213, 601-610



Observed Deficiency:

Restroom

Notes:

The vertical toilet grab bar (under ANSI 117.1) is not provided. This is not required under ADA. Thus this is optional for existing

Recommended Solution:

Optional: Add grab bar.

Alternate Solution:

N/A

Item #:

B2.5

White Mound
County Park

Toilet Buildings -
Mens/Womens
Playground

Code:

212, 213, 601-610



Observed Deficiency:

Restroom

Notes:

Building is not accessible, but nearby Beach Toilet Building is.

Recommended Solution:

Add signage directing users to nearest accessible facility.

Alternate Solution:

Optionally install a new accessible pit toilet building in proximity to the nearby parking lot.

Item #:

B2.6

White Mound
County Park

Toilet Buildings -
Mens/Womens
Playground

Code:

703



Observed Deficiency:

Signage

Notes:

Wall mounted accessible room signs at entry door is missing.

Recommended Solution:

Add ADA room sign.

Alternate Solution:

N/A

Item #:

B3.1

White Mound
County Park

Toilet Buildings -
Horse
Campground

Code:

212, 213, 601-610



Observed Deficiency:

Restroom

Notes:

These two multi occupant Men's and Women's units are on a hilltop and not accessibly configured or on an accessible route from

Recommended Solution:

Add signage directing users to nearest accessible facility.

Alternate Solution:

Optionally install a new accessible pit toilet building in proximity to the nearby parking lot.

Item #:

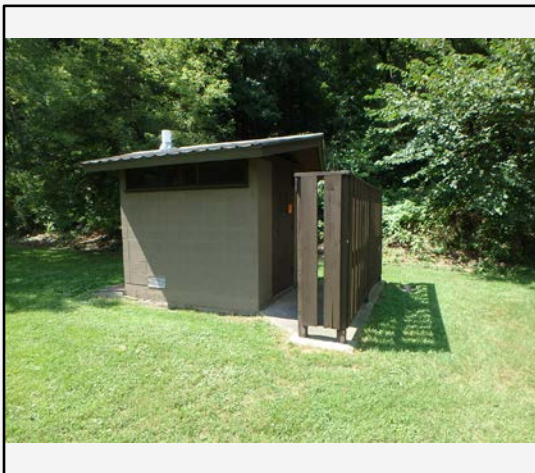
B3.2

White Mound
County Park

Toilet Buildings -
Horse
Campground

Code:

703



Observed Deficiency:

Signage

Notes:

Wall mounted accessible room sign at entry door is missing.

Recommended Solution:

Alternate Solution:

N/A

Item #:

B4.1

White Mound
County Park

Toilet Buildings -
ADA Boat
Landing

Code:

404



Observed Deficiency:

Entry

Notes:

Exterior approach walk at door is irregular, too small and has vertical transition to floor greater than 1/4" at some points.

Recommended Solution:

Add new insulated (minimum 48"x48") concrete floating slab with maximum 1/50 slope. Connected to an accessible site route.

Alternate Solution:

N/A

Item #:

B4.2

White Mound
County Park

Toilet Buildings -
ADA Boat
Landing

Code:

703



Observed Deficiency:

Signage

Notes:

Wall mounted accessible room sign at entry door is missing.

Recommended Solution:

Add ADA room sign.

Alternate Solution:

N/A

Item #:

B4.3

White Mound
County Park

Toilet Buildings -
ADA Boat
Landing

Code:

404



Observed Deficiency:

Entry

Notes:

Door lever handle is not functioning and door does not easily close.

Recommended Solution:

Replace door handle and adjust door.

Alternate Solution:

N/A

Item #:

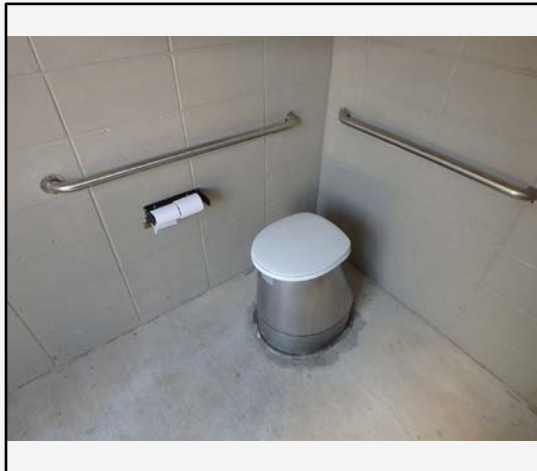
B4.4

White Mound
County Park

Toilet Buildings -
ADA Boat
Landing

Code:

212, 213, 601-610



Observed Deficiency:

Restroom

Notes:

The vertical toilet grab bar (under ANSI 117.1) is not provided. This is not required under ADA. Thus this is optional for existing

Recommended Solution:

Optional: Add grab bar.

Alternate Solution:

N/A

Item #:

B4.5

White Mound
County Park

Toilet Buildings -
Mens/Womens
Boat Landing

Code:

212, 213, 601-610



Observed Deficiency:

Restroom

Notes:

Building is not accessible, but nearby Northeast Pit Toilet Building is.

Recommended Solution:

Add signage directing users to nearest accessible facility.

Alternate Solution:

N/A

Item #:

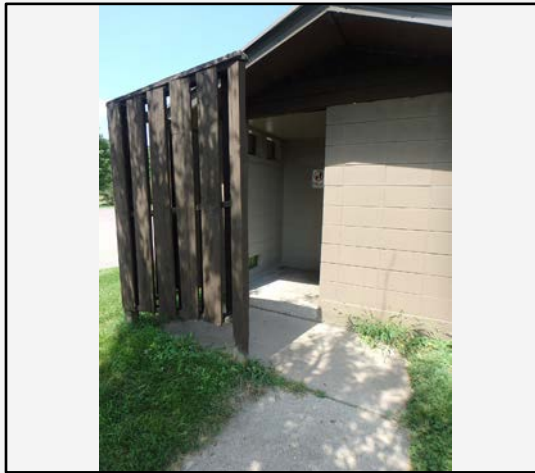
B4.6

White Mound
County Park

Toilet Buildings -
Mens/Womens
Boat Landing

Code:

703



Observed Deficiency:

Signage

Notes:

Wall mounted accessible room signs at entry door is missing.

Recommended Solution:

Add ADA room sign.

Alternate Solution:

N/A

Item #:

B5.1

White Mound
County Park

Toilet Buildings -
ADA
Campground

Code:

404



Observed Deficiency:

Entry

Notes:

Exterior approach walk at door is irregular, too small and has vertical transition to floor greater than 1/4" at some points.

Recommended Solution:

Add new insulated (minimum 48"x48") concrete floating slab with maximum 1/50 slope. Connected to an accessible site route.

Alternate Solution:

N/A

Item #:

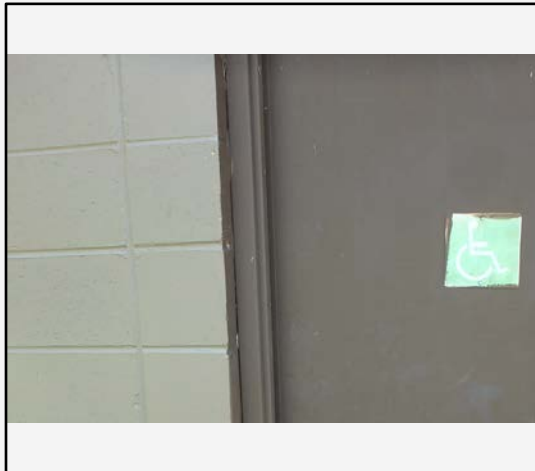
B5.2

White Mound
County Park

Toilet Buildings -
ADA
Campground

Code:

703



Observed Deficiency:

Signage

Notes:

Wall mounted accessible room sign at entry door is missing.

Recommended Solution:

Add ADA room sign.

Alternate Solution:

N/A

Item #:

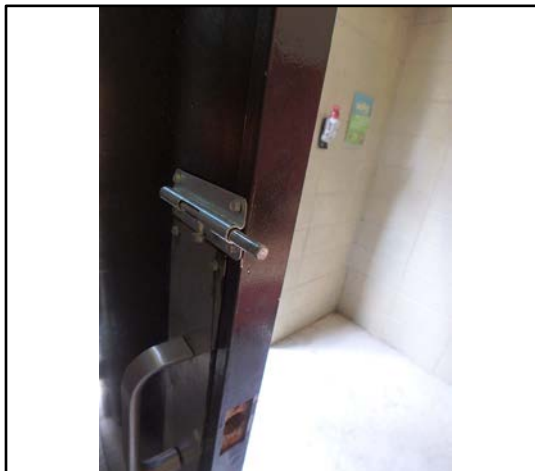
B5.3

White Mound
County Park

Toilet Buildings -
ADA
Campground

Code:

404



Observed Deficiency:

Entry

Notes:

Door has a non-accessible and non-code compliant barrel bolt lock.

Recommended Solution:

Add a lever handle privacy door latch and remove deadbolt.

Alternate Solution:

N/A

Item #:

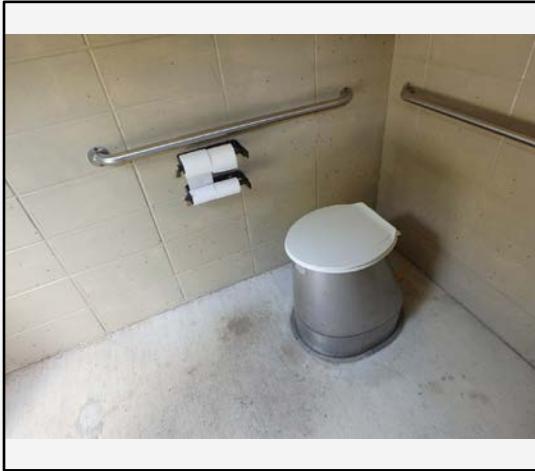
B5.4

White Mound
County Park

Toilet Buildings -
ADA
Campground

Code:

212, 213, 601-610



Observed Deficiency:

Restroom

Notes:

The vertical toilet grab bar (under ANSI 117.1) is not provided. This is not required under ADA. Thus this is optional for existing

Recommended Solution:

Optional: Add grab bar.

Alternate Solution:

N/A

Item #:

B5.5

White Mound
County Park

Toilet Buildings -
Mens/Womens
Campground

Code:

212, 213, 601-610



Observed Deficiency:

Restroom

Notes:

Building is not accessible, but nearby Campground Pit Toilet Building is. Add signage directing disabled users to nearby

Recommended Solution:

Add signage directing users to nearest accessible facility.

Alternate Solution:

N/A

Item #:

B6.1

White Mound
County Park

Toilet Buildings -
Mens/Womens
Campground

Code:

703



Observed Deficiency:

Signage

Notes:

Wall mounted accessible room signs at entry door is missing.

Recommended Solution:

Add ADA room sign.

Alternate Solution:

N/A

Item #:

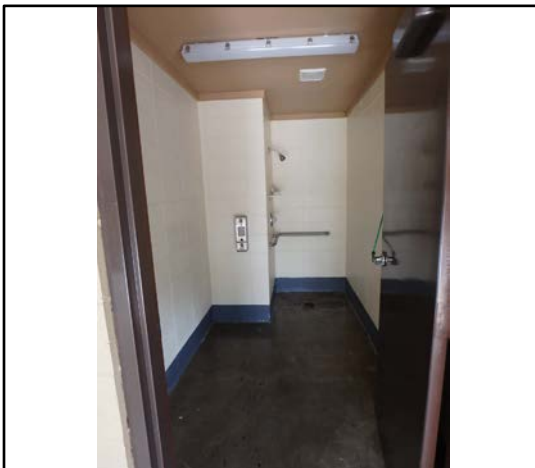
B6.2

White Mound
County Park

Shower Building

Code:

212, 213, 601-610



Observed Deficiency:

Restroom

Notes:

Shower rooms are not fully accessibly configured, stall size is incorrect, proper changing bench is not provided, accessible

Recommended Solution:

Modify one of the center shower rooms to capture some area from the adjacent room. Designate the new room as accessible. Add ADA signage to all rooms.

Alternate Solution:

N/A

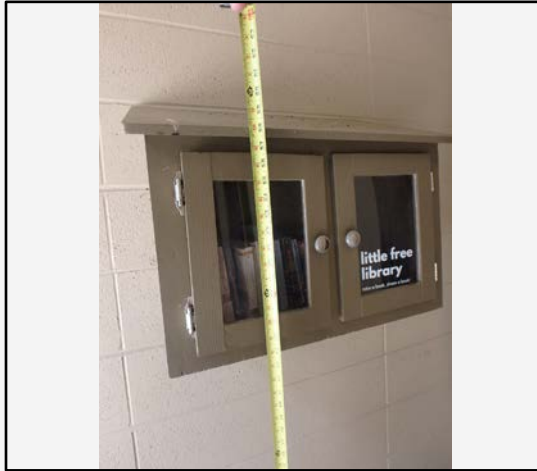
Item #:

B6.3

White Mound
County Park

Shower Building

Code:



Observed Deficiency:

Furnishing

Notes:

The Little Free Library is mounted above the 48" range.

Recommended Solution:

Relocate to a lower position.

Alternate Solution:

Offer staff assistance for operation.

Item #:

B6.4

White Mound
County Park

Shower Building

Code:

212, 213, 601-610



Observed Deficiency:

Restroom

Notes:

Lavatory sinks are lacking proper mirror height, insulated piping and trap.

Recommended Solution:

Revise one sink location and add symbol of accessibility.

Alternate Solution:

N/A

Item #:

B6.5

White Mound
County Park

Shower Building

Code:

208



Observed Deficiency:

Parking/Access

Notes:

No Accessible parking stall in proximity to this central building.

Recommended Solution:

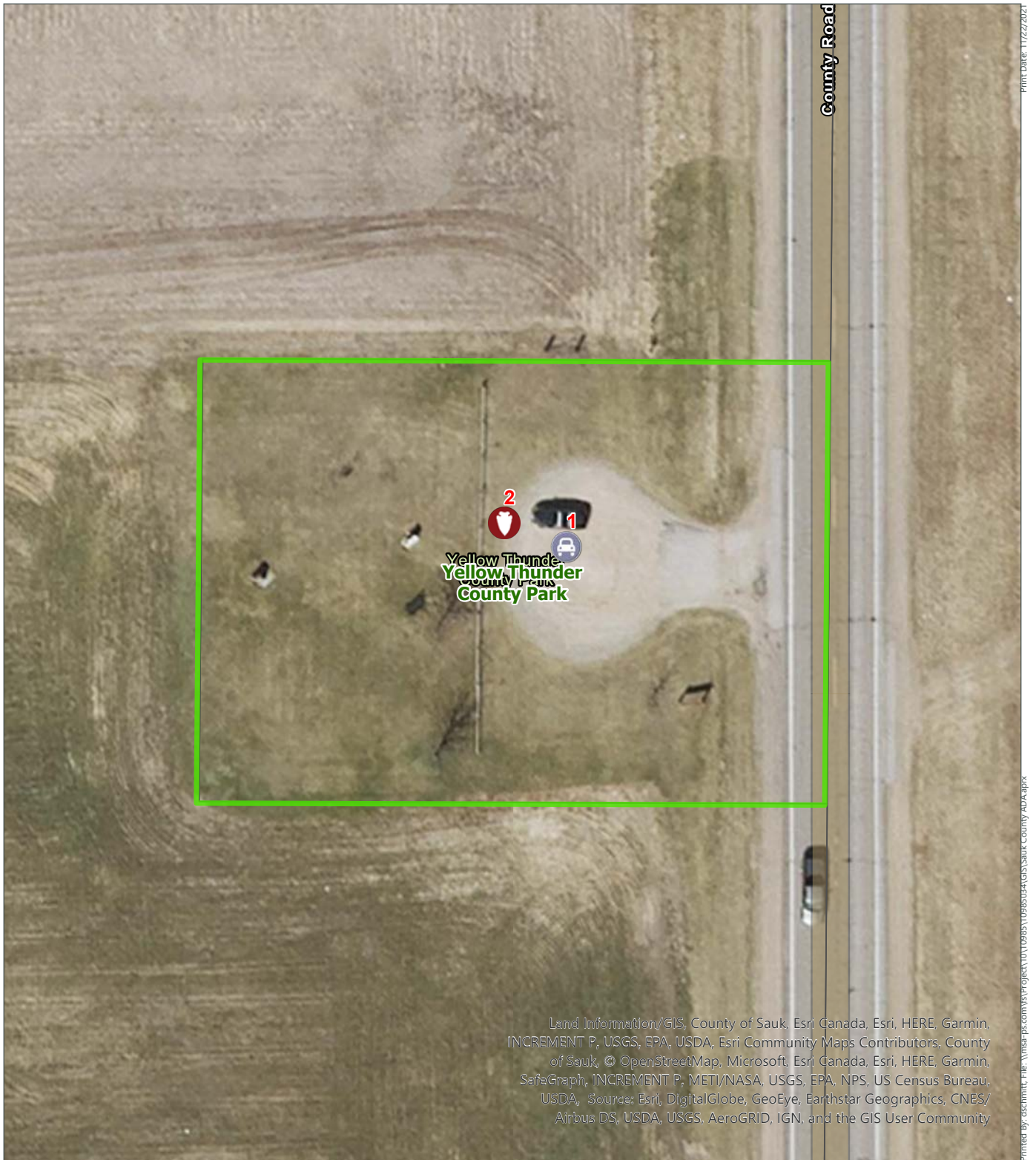
Add accessible space and sign properly.

Alternate Solution:

Stripe and add signage one accessible stall at this building on existing asphalt drive.



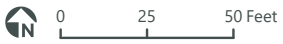
APPENDIX - A



Land Information/GIS, County of Sauk, Esri Canada, Esri, HERE, Garmin, INCREMENT P, USGS, EPA, USDA, Esri Community Maps Contributors, County of Sauk, © OpenStreetMap, Microsoft, Esri Canada, Esri, HERE, Garmin, SafeGraph, INCREMENT P, METI/NASA, USGS, EPA, NPS, US Census Bureau, USDA, Source: Esri, DigitalGlobe, GeoEye, Earthstar Geographics, CNES/Airbus DS, USDA, USGS, AeroGRID, IGN, and the GIS User Community



Data Sources:
Sauk County
State of Wisconsin
Esri



17: Yellow Thunder County Park

ADA Facility Audit

Sauk County, WI

- Sauk County Parks
- Trails and Paths
- Recreation Buildings
- Other Building
- Other Parks

Item #:

1

Yellow Thunder
County Park

Code:

208.2-3



Observed Deficiency:

Accessible parking missing or improperly located

Notes:

Gravel parking lot. Limited disturbance due to historic nature of site.

Recommended Solution:

Add a minimum of one van accessible parking stall.

Alternate Solution:

N/A

Item #:

2

Yellow Thunder
County Park

Code:

206.2.1



Observed Deficiency:

Accessible route missing

Notes:

Route to signage in grass. Limited disturbance due to historic nature of site.

Recommended Solution:

Modify or replace route.

Alternate Solution:

Offer alternative accomodation such as audio tour or augmented reality interface.

SAUK COUNTY ADA COORDINATOR

Building Services - Facility Director
ADA Coordinator
510 Broadway
Room C123
Baraboo, WI 53913

(608) 355-4415
Toll Free: (800) 555-1212
TTY (800) 555-1111
Other languages: (608) 355-5881

Email: ADAContact@co.sauk.wi.us

**PUBLIC OUTREACH**

Sauk County Land Resources and Environment Department held a public open house Monday, January 10th from 5:30 - 6:30 pm. Citizens and interested stakeholders were invited attend in-person or virtually. The presentation provided an overview of the Transition Plan and Audit Process.

The meeting was posted at county facilities and sent to stakeholders.

The meeting had two attendees. The recording will be made available upon request.

Sauk County ADA Audit & Transition Plan



Monday, January 10th

5:30 - 6:30 pm

Sauk County West Square Building

WSB Room 213

505 Broadway

Baraboo, WI 53193



Please join us on Monday, January 10th from 5:30 - 6:30 for an overview of the Sauk County Parks and Recreation ADA Audit and Transition Plan. This plan identifies accessibility barriers in our public recreation facilities and provides guidance for upgrades, repairs, and renovations over the next ten years. MSA Professional Services will be presenting on ADA standards, the findings of the County Parks and Recreation Audit, recommended improvements and of the transition plan. Citizens may attend in-person or virtually by registering with the following link: <https://tinyurl.com/SaukCountyADA> or use the QR code below.





Sauk County Parks ADA Audit and Transition Plan
Public Information Meeting
5:30 – 6:30 PM, January 10, 2022
Zoom - <https://tinyurl.com/SaukCountyADA>

- I. **5:25 – 5:30 PM** **“WAITING ROOM”**
Virtual participants can login to meeting.

- II. **5:30 – 5:35 PM** **LOGISTICS FOR HYBRID MEETING** (MSA)
Provide meeting logistics and time for additional participants to join prior to the presentation.
 - Questions – All virtual participants will be muted during the presentation. Both Virtual and In-person attendees will be called upon during specific points of the presentation.

- III. **5:35 – 5:40 PM** **PROJECT INTRODUCTION** (TBD)
Provide background on purpose of project.

- IV. **5:40 – 6:00 PM** **PROJECT PRESENTATION** (Dan Schmitt, MSA)
MSA will provide an overview of the Sauk County Parks and Recreation ADA Audit and Transition Plan. Questions will be accepted via chat from virtual attendees and held for later discussion.

- V. **6:00 – 6:30 PM** **GENERAL DISCUSSION**
Open forum and general question and answer period.





GRIEVANCE PROCEDURE AND REQUEST FOR ACCOMMODATION

Link to current Sauk County Grievance Procedure:

<https://www.co.sauk.wi.us/general/americans-disabilities-act-ada-grievance-procedure>

Sauk County Government
Americans with Disabilities Act (ADA)
Grievance Procedure

This Grievance Procedure is established to meet the requirements of the [Americans with Disabilities Act of 1990 \("ADA"\)](#). It may be used by anyone who wishes to file a complaint alleging discrimination on the basis of disability in the provision of services, activities, programs, or benefits by the Sauk County Government. The Sauk County Government's Personnel Policy governs employment-related complaints of disability discrimination. The Sauk County Government has adopted an internal grievance procedure providing for prompt and equitable resolution of complaints alleging any action prohibited by Title II of the Americans with Disabilities Act. Title II states, in part, that "no otherwise qualified disabled individual shall, solely by reason of such disability, be excluded from the participation in, be denied the benefits of, or be subjected to discrimination" in programs or activities sponsored by a public entity.

1. A complaint must be filed in writing and shall contain the name and address of the person filing it together with a brief description of the violation(s) alleged. The complaint should contain information about the alleged discrimination such as name, address, phone number of complainant and location, date, and description of the problem. Alternative means of filing complaints, such as personal interviews or a tape recording of the complaint, will be made available for persons with disabilities upon request.
2. A complaint should be filed as soon as possible but in no case later than 60 calendar days of when the complainant becomes aware of the alleged violation.
3. An investigation, when deemed appropriate, shall follow the filing of a complaint. The investigation shall be conducted by the ADA Coordinator or their designee. These rules contemplate informal but thorough investigations, affording all interested persons and their representatives, if any, an opportunity to submit evidence relevant to a complaint.

4. A written determination as to the validity of the complaint and a description of the resolution, if any, shall be issued by the ADA Coordinator and a copy shall be forwarded to the complainant no later than 15 business days after its filing. In the event a complex issue arises that requires additional review, the response time may be extended beyond 15 days.
5. The ADA Coordinator shall maintain the files and records of the Sauk County Government relating to the complaints filed for at least three years.
6. The complainant may request reconsideration of their case in instances where he or she is dissatisfied with the resolution. The request for reconsideration should be made within 30 calendar days of the issuance of the ADA Coordinator's written resolution, to the County Administrator.
7. The right of a person to a prompt and equitable resolution of the complaint filed hereunder shall not be impaired by the person's pursuit of other remedies such as the filing of an ADA complaint with the responsible federal department or agency. Use of this grievance procedure is not a prerequisite to the pursuit of other remedies.
8. These rules shall be construed to protect the substantive rights of interested persons to meet appropriate due process standards and to assure that the Sauk County Government complies with the ADA and implementing regulations.

Notice Under the Americans with Disabilities Act

In accordance with the requirements of title II of the Americans with Disabilities Act of 1990 ("ADA"), the Sauk County Government will not discriminate against qualified individuals with disabilities on the basis of disability in its services, programs, or activities.

Employment: The Sauk County Government does not discriminate on the basis of disability in its hiring or employment practices and complies with all regulations promulgated by the U.S. Equal Employment Opportunity Commission under title I of the ADA.

Effective Communication: The Sauk County Government will generally, upon request, provide appropriate aids and services leading to effective communication for qualified persons with disabilities so they can participate equally in Sauk County Government's programs, services, and activities, including qualified sign language interpreters, documents in Braille, and other ways of making information and communications accessible to people who have speech, hearing, or vision impairments.

Modifications to Policies and Procedures: The Sauk County Government will make all reasonable modifications to policies and programs to ensure that people with disabilities have an equal opportunity to enjoy all of its programs, services, and activities. For example, individuals with service animals are welcomed in Sauk County Government's offices, even where pets are generally prohibited.

Anyone who requires an auxiliary aid or service for effective communication or a modification of policies or procedures to participate in a program, service, or activity of Sauk County Government should contact the Sauk County ADA Coordinator, as soon as possible but no later than 48 hours before the scheduled event.

The ADA does not require the Sauk County Government to take any action that would fundamentally alter the nature of its programs or services, or impose an undue financial or administrative burden.

Complaints that a program, service, or activity of the Sauk County Government is not accessible to persons with disabilities should be directed to Sauk County Government ADA Coordinator. The Sauk County Government will not place a surcharge on a particular individual with a disability or any group of individuals with disabilities to cover the cost of providing auxiliary aids/services or reasonable modifications of policy, such as retrieving items from locations that are open to the public but are not accessible to persons who use wheelchairs.

The Sauk County Government does not discriminate on the basis of disability in the admission or access to, or treatment or employment in, its programs or activities.

Complaints should be addressed to:

Sauk County ADA Coordinator
510 Broadway
Room C123
Baraboo, WI 53913

(608) 355-4415

Toll Free: (800) 555-1212

TTY (800) 555-1111

Other languages: (608) 355-5881

Email: ADAContact@co.sauk.wi.us

RESOLUTION # 14-2022

Resolution to adopt the Sauk County ADA Parks and Recreational Facilities Access Audit and Transition Plan as an Appendix to the 2020-2024 Sauk County Outdoor Recreation Plan.

Resolution offered by the Land Resources and Environment Committee

Resolved by the Board of Supervisors of Sauk County, Wisconsin:

BACKGROUND:

The American Disabilities Act (ADA) requires state and local governments to provide goods, services, and programs to individuals with disabilities on an equal basis with the rest of the public. While people think that this only applies to new or alterations to existing services, facilities, or programs; this is not the case. Older facilities and programs are not grandfathered under the ADA provisions. Public entity program accessibility obligations are outlined under 28 CFR Part 35.150, as amended from time to time. Alterations to facilities may be necessary but are not required if said actions would result in undue financial and administrative burdens. However, an audit of our existing facilities and a transition plan will enable the County to update and make those accommodations necessary over the course of time.

The Sauk County Land Resources and Environment Department has worked with MSA Professional Services Inc. for the ADA Access Audit and Transition Plan (Appendix A). This plan identifies accessibility barriers in the County's public recreation facilities and provides guidance for upgrades, repairs, and renovations over the next ten years.

WHEREAS, Resolution No. 150-2019 adopting the 2020-2024 Sauk County Outdoor Recreation Plan was approved by the Sauk County Board of Supervisors on January 21, 2020; and,

WHEREAS, public entities are obligated to provide goods, services, and programming on an equal opportunity basis pursuant to the American Disabilities Act 28 CFR Part 35.150; and,

WHEREAS, Resolution No. 63-2021 awarding the contract for an ADA Audit and Transition Plan for Sauk County Parks and Recreational Facilities was approved by the Sauk County Board of Supervisors on June 15, 2021; and,

WHEREAS, the Sauk County ADA Parks and Recreational Facilities Access Audit and Transition Plan intersects with the following priorities and objectives of the Sauk County Outdoor Recreation Plan; objective: community education; priority: partnerships, objectives: expand County planning services, objective: consider multiple outcomes when planning for cross-boundary recreation; intersect with other units of government and non-government organizations (NGOs); priority: further development of the County Park System, objective: develop a CIP to expand recreation opportunities and improve infrastructure; and,

THEREFORE, BE IT RESOLVED, that the Sauk County Board of Supervisors, met in regular session, does hereby adopt the ADA Access Audit and Transition Plan attached hereto as Appendix A as an appendix to the 2020-2024 Sauk County Outdoor Recreation Plan.

Approved for presentation to the County Board by the Land Resources and Environment Committee, this 15th day of February 2022.

Resolution 14-2022

52
53
54
55
56
57
58
59
60
61
62
63
64
65
66
67
68
69
70
71
72
73
74
75
76
77
78
79
80
81
82
83
84
85
86
87
88
89
90
91
92
93
94
95
96
97
98

Consent Agenda Item: [] YES [X] NO

Fiscal Impact: [] None [X] Budgeted Expenditure [] Not Budgeted

Vote Required: Majority = X 2/3 Majority = _____ 3/4 Majority = _____

The County Board has the legal authority to adopt: Yes X No _____ as reviewed
by the Corporation Counsel, [Signature], Date:
02/16/2022.

Offered and passage moved by: Land Resources and Environment Committee

[Signature]
MARTY KRUEGER, Chair

[Signature]
PETER KINSMAN, Vice Chair

[Signature]
DENNIS POLIVKA

[Signature]
ROSS CURRY

[Signature]
ROB NELSON

[Signature]
VALERIE MCAULIFFE

[Signature]
BRANDON LOHR

[Signature]
RANDALL PUTTKAMER

Fiscal Note: The 2022 LRE Budget does account for staff time associated with maintenance of County Parks and Recreational Facilities as well as maintenance materials. Additional improvements and/or renovations needed in accordance with the ADA Transition Plan would be reviewed in future budget cycles.

MIS Note: No Impact