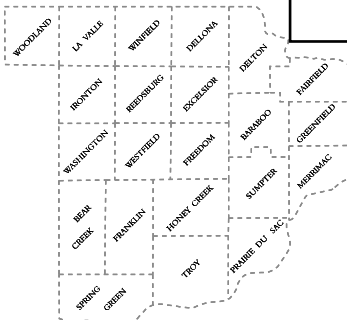


SECTION NUMBERING OF A TOWNSHIP

6	5	4	3	2	1
7	8	9	10	11	12
18	17	16	15	14	13
19	20	21	22	23	24
30	29	28	27	26	25
31	32	33	34	35	36

CIVIL TOWNS

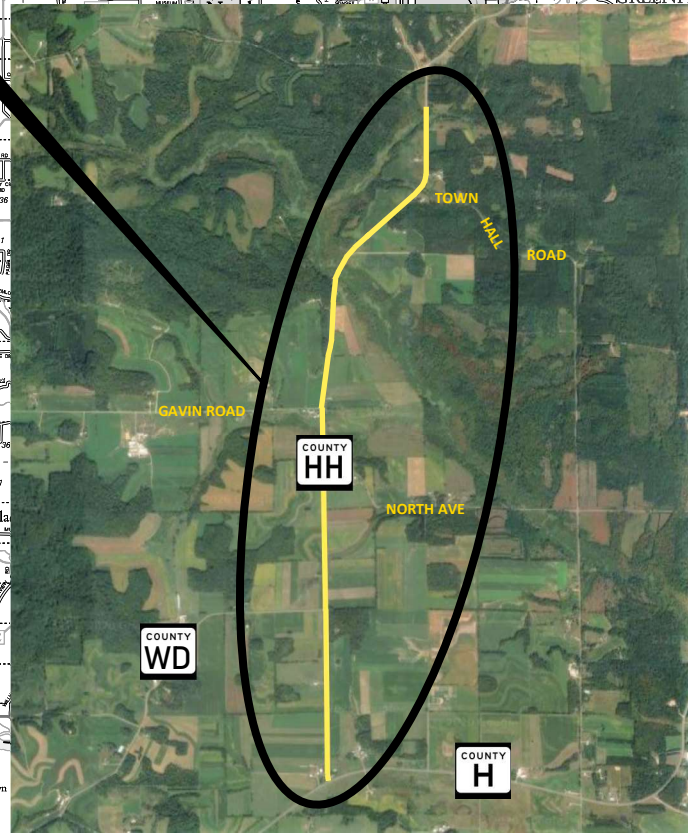
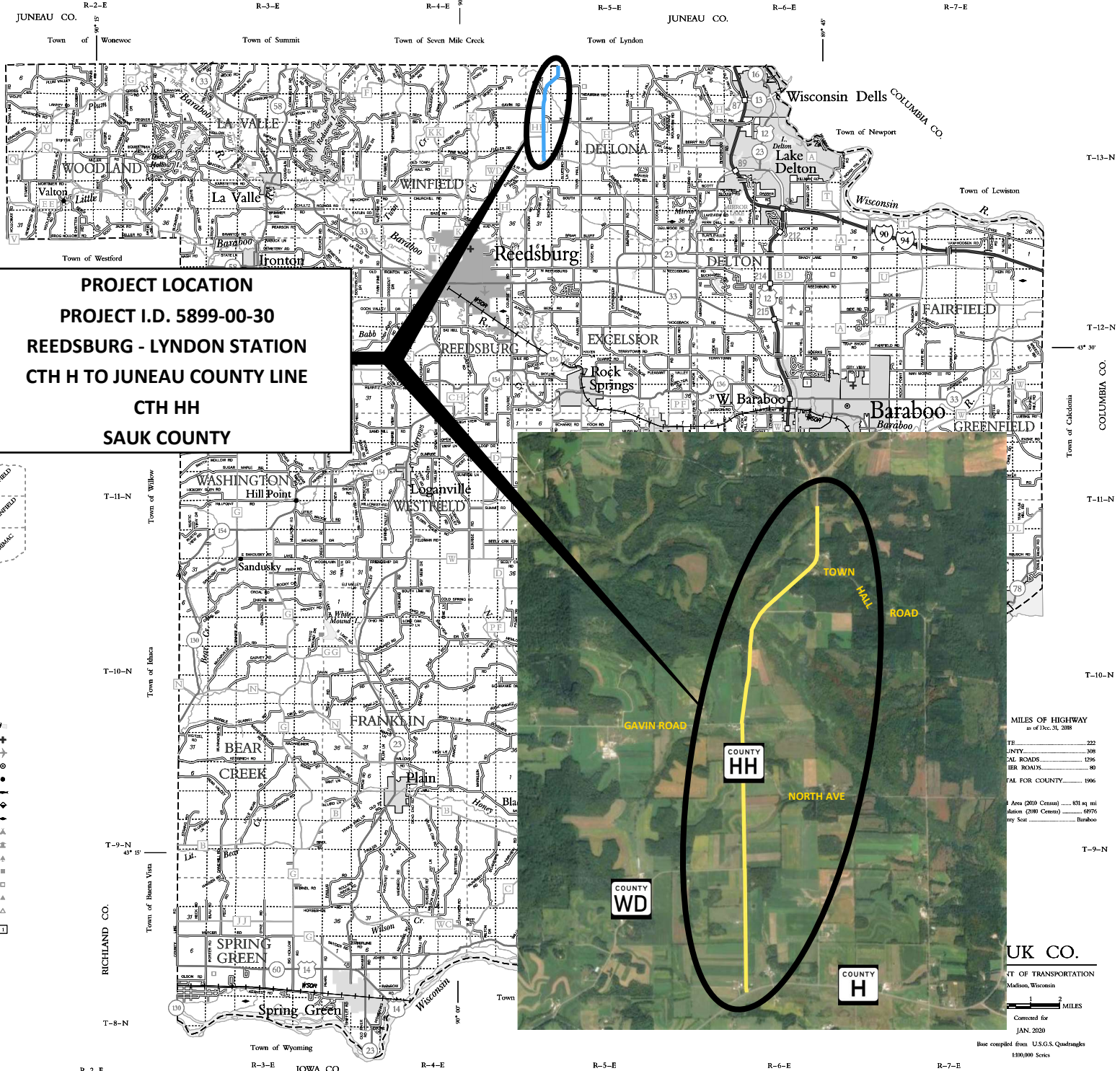


LEGEND

- Freeway
- Multilane Divided
- U.S. or State Hwy
- County Trunk Hwy
- Town Road
- Firelane
- Railroad
- State Trail
- Interchange
- Highway Separation
- Interstate Highway No.
- U.S. Highway No.
- State Highway No.
- County Highway Letter
- Dam
- Hospital
- Airport
- County Seat
- Unincorporated Village
- Fish Hatchery
- Game Farm
- Public Home or Fish Grds.
- Public Camp & Picnic Grds.
- Ranger Station
- State Park
- County Park With Facilities
- Without Facilities
- Rest Area Modern Facilities
- Rustic Facilities
- State Boundary
- County Boundary
- Civil Town Boundary
- Section Line

For boundaries of public hunting and fishing grounds please contact the Department of Natural Resources

PROJECT LOCATION
PROJECT I.D. 5899-00-30
REEDSBURG - LYNDON STATION
CTH H TO JUNEAU COUNTY LINE
CTH HH
SAUK COUNTY



MILES OF HIGHWAY as of Dec. 31, 2018

TE	222
JNTY	308
AL ROADS	1296
ER ROADS	80
AL FOR COUNTY	1906

Area (2010 Census) 831 sq mi
Area (2000 Census) 827 sq mi
City Baraboo

SAUK CO.
 DEPT. OF TRANSPORTATION
 Madison, Wisconsin
 1 MILE
 Corrected for
 JAN. 2020