

La Crosse County TJC Process

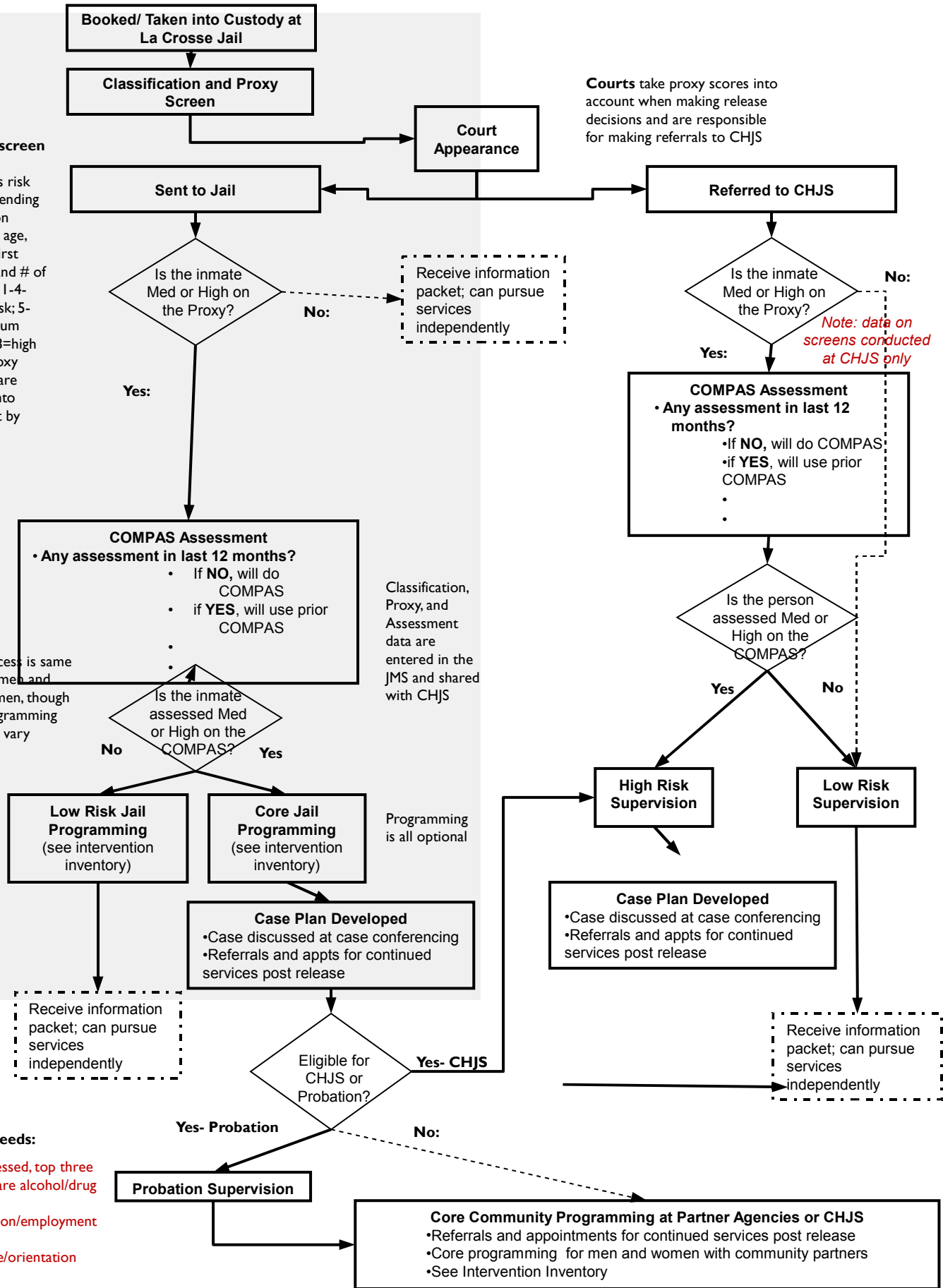
Proxy screen scores inmate's risk of reoffending based on current age, age at first arrest and # of priors. 1-4=low risk; 5-6=medium risk; 7-8=high risk. Proxy scores are taken into account by judges.

Process is same for men and women, though programming may vary

Classification, Proxy, and Assessment data are entered in the JMS and shared with CHJS

Programming is all optional

Courts take proxy scores into account when making release decisions and are responsible for making referrals to CHJS



Top Needs:
 As assessed, top three needs are alcohol/drug (85%), education/employment (79%), attitude/orientation (58%)