

**SAUK COUNTY  
AGREEMENT FOR ESTABLISHING AND MOWING PRAIRIE STRIPS AT THE  
SAUK COUNTY FARM**

This Agreement for establishing and mowing prairie strips, which the Land Resources and Environment Department – Land Conservation Service Area (“Agreement”) is entering into on behalf of the County of Sauk, Wisconsin, a Wisconsin quasi-municipal corporation and Ideal Land Management Services LLC, a private business (“Contractor”).

**WHEREAS**, Sauk County wishes to mow an existing prairie strips and establish a new prairie strip on the Sauk County Farm.

**WHEREAS**, Sauk County requested quotes on March 12, 2025 and 2 quotes were received by the deadline established on March 31, 2025 at 4:30 PM.

**WHEREAS**, an evaluation of the quotes was conducted by the appropriate Land Resources and Environment staff against the criteria specified in the quotes.

**WHEREAS**, Ideal Land Management Services LLC was selected and approved by the Sauk County Land Resources and Environment Department on April, 1 2025.

**NOW THEREFORE**, this Agreement is made today, April 3, 2025, by and between Sauk County and Ideal Land Management Services LLC, which agree as follows:

1. TERM. The Term of this Agreement shall commence as of the date by which all Parties hereto have executed this Agreement and shall expire when the mowing has been completed and the prairie has been planted, no later than December 31, 2025.

2. RFQ INCORPORATED INTO CONTRACT. The RFQ provided dated March 31, 2025 (Exhibit A) is a part of the contract between the County and the Contractor. The Contractor shall be bound to perform according to the terms of the RFQ, their Quote (Exhibit B), and the terms of this contract.

No Exhibit or subsequently used form shall change or otherwise vary any undertaking in the main Request for Quote except as specifically acknowledged as an amendment.

3. FEE FOR WORK PERFORMED. The fee for work performed is \$2,650.00.

4. STANDARD TERMS AND CONDITIONS. All services shall be performed in accordance with the original RFQ requirements (Exhibit A), which is attached and made a part of this Agreement. Any attachments or exhibits references in this Agreement are made part of this Agreement. Payment for these services will be on a lump sum basis.

5. INSURANCE COVERAGE. The Contractor, at their expense, shall maintain public liability insurance issued by an insurance company licensed to do business in the State of Wisconsin, including bodily injury and property damage coverage insuring the Contractor and County with minimum coverage as follows: liability coverage for its officers, employees, and agents with policy limits at minimum of \$1,000,000 single

limit and \$3,000,000 aggregate and workers compensation insurance in the following amounts:

- a. Coverage A: Limits – Statutory
- b. Coverage B: Employer’s Liability Limits
- c. Bodily Injury by Accident - \$100,000 each accident minimum
- d. Bodily Injury by Disease - \$100,000 each employee minimum
- e. Bodily Injury by Disease - \$500,000 policy limit minimum

The County shall be named as an additional insured on all insurance policies except workers compensation. The certificate shall provide for a ten-day written notice to the County in the event of cancellation or material change of coverage.

**6. INDEMNIFICATION.** The Contractor agrees to save, hold harmless, defend and indemnify the County and all its officers, employees and agents, against any and all liability claims, costs of whatever kind and nature, for injury to or death of any person or persons, and for loss or damage to any property, County, State or other, occurring in connection with or in any way incident to or arising out of the occupancy, use, service, operation or performance of the work in connection with this Contract.

**IN WITNESS WHEREOF**, the parties hereto, acting through their duly authorized agents, have signed and sealed this agreement.

**COUNTY OF SAUK, WISCONSIN**

By: \_\_\_\_\_  
Lisa Wilson, County Administrator  
505 Broadway  
Baraboo, WI 53913  
(608) 355-3273  
[lisa.wilson@saukcountywi.gov](mailto:lisa.wilson@saukcountywi.gov)

Date: \_\_\_\_\_

**CONTRACTOR NAME**

By: \_\_\_\_\_  
Brian Kozlowski, Owner  
Ideal Land Management Services LLC  
S4314 State Rd 23  
Reedsburg, WI 53959  
608-415-8326

Date: \_\_\_\_\_

**(Exhibit A)**  
**Sauk County, Wisconsin Request for Quote**  
**Sauk County Farm: Mowing weeds in established pollinator strip,**  
**new prairie plantings**

**Date:** March 12, 2025

**Requesting Agency:** Sauk County Land Resources and Environment Department

**Contact Name:** Brian Sadler

**Email:** [brian.sadler@saukcountywi.gov](mailto:brian.sadler@saukcountywi.gov)

**Phone:** (608) 355-4841

**Return completed quote by email to agency contact no later than 4:30 p.m. on Monday, March 31, 2025.**

Vendors interested in providing a quote on this project are directed to review the project description and provide a quote to the contact indicated above. All questions shall be directed to that contact.

**Project Description/Title:** **1)** Mowing pollinator strips in spring/summer [1 acre]. **2)** A pollinator strip seeding after soybean harvest in fall of 2025 [5.1 acres + 1.3 acres].

**Background of the Project:** The Sauk County Farm is located 3 miles south of Reedsburg along State Rd 23. Over the next 3-5 years pollinator strips are being systematically seeded within the cropfields. These strips will require mowing the first 1-2 years of growth to combat weed pressure.

**Agency Need:**

**Part 1:** Mowing of weeds within the prairie strip that was planted in fall of 2024. Vegetation to be mowed at 10-15", no lower than 10". Planned for 3 mowings throughout the 2025 growing season.

**Part 2:** Pollinator seeding with seed equivalent to that of prior seeding (see included list). Approximately 5.1 acres of seeding to be no-till drilled into soybean stubble after harvest of soybeans, prior to 2026 growing season. Include seed cost in the price of the bid.

**Part 3:** Prairie/wood edge seeding: see attached seed mix (or similar shade tolerant species mix). This 1.3 acre section is located on the north side of the woodlot and may have future wildlife shrubs planted throughout. Include seed cost in the price of the bid.

**Project Deliverables:** Mowing weeds in pollinator strip with equipment capable of staying minimum 10" off of the ground. No-till drilling in pollinator seed into stubble post-soybean harvest.

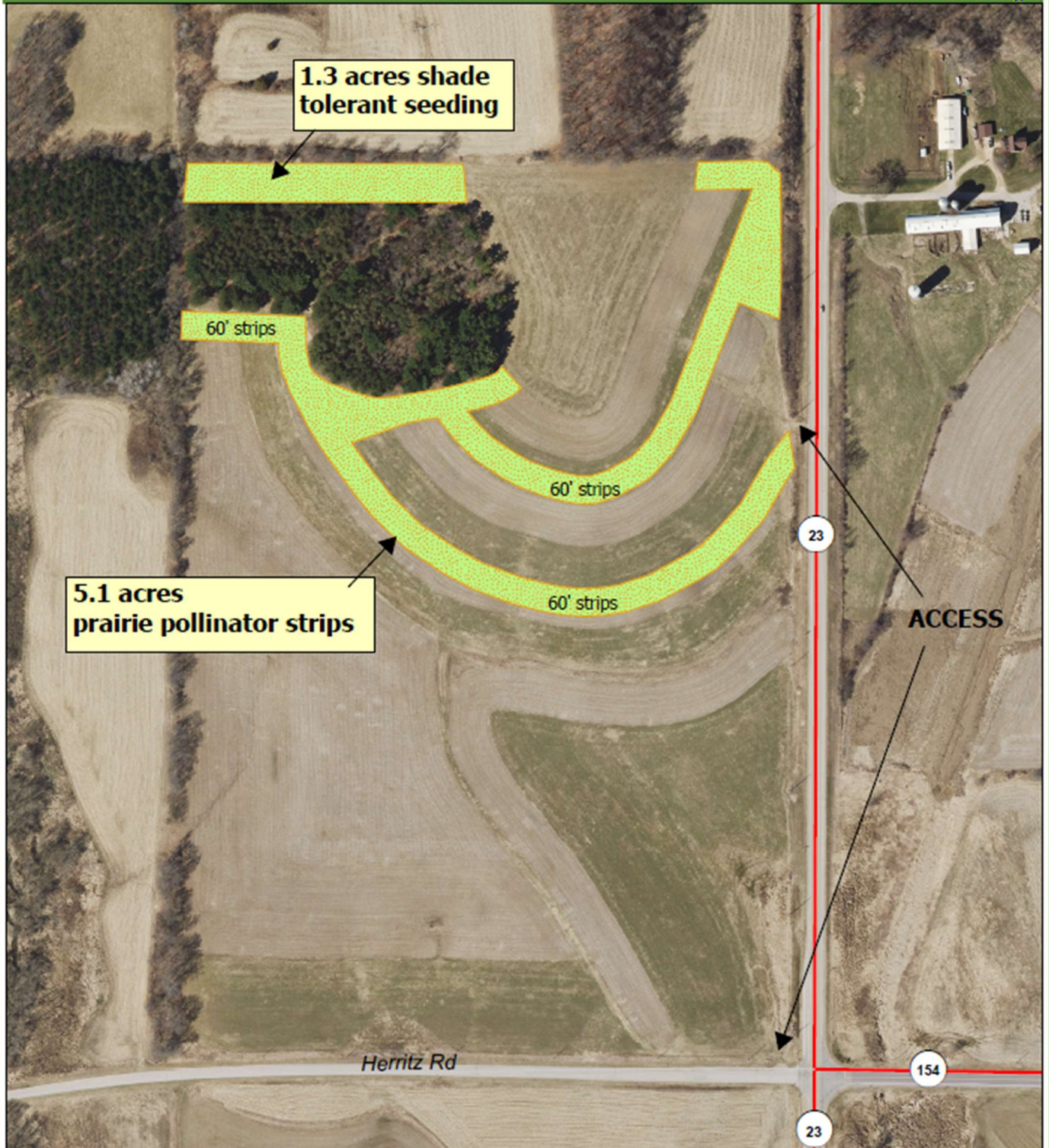
**Deliverable Due Date:** The due date of the project deliverables shall be December 31, 2025.

**Notes:**

1. Please note this is a generalized project description; further detailed instructions will be provided to the selected vendor.
2. A site showing is available upon request. Please direct those requests to the contact above.
3. Sauk County financial permits the acceptance of quotes that do not exceed \$10,000.

# Sauk County Land Resources & Environment

## HCC Farm Perennial Habitat



**Sauk County**  
Land Resources & Environment  
All of our maps are for informational purposes only. They are not to be used for legal or financial purposes. We are not responsible for any errors or omissions. Please contact us for more information.





## SHOOTING STAR NATIVE SEEDS

20740 County Road 33 • Spring Grove, MN 55974  
(507) 498-3944 • info@shootingstarnativeseed.com

Description: SSNS Savanna & Woodland Edge Mix  
Seeding Rate: 10 lb/acre (50.8 seeds/square foot)  
Notes: Soil - Wet Mesic to Dry Mesic, Sun - Partial to Shade

Edge mix for  
1.3 acre

Common Name	Scientific Name	% of Mix	Seeds/ft <sup>2</sup>	Total
<b>Grasses</b>				
Big Bluestem	<i>Andropogon gerardii</i>	8.00%	2.9	0.800 PLS lb
Sideoats Grama	<i>Bouteloua curtipendula</i>	14.00%	3.1	1.400 PLS lb
Ear-leaved Brome	<i>Bromus latiglumis</i>	4.00%	1.1	0.400 PLS lb
Bottlebrush Grass	<i>Elymus hystrix</i>	8.00%	1.0	0.800 PLS lb
Silky Wild Rye	<i>Elymus villosus</i>	12.00%	2.4	1.200 PLS lb
Virginia Wild Rye	<i>Elymus virginicus</i>	18.00%	2.5	1.600 PLS lb
Little Bluestem	<i>Schizachyrium scoparium</i>	6.00%	3.3	0.600 PLS lb
Indiangrass	<i>Sorghastrum nutans</i>	10.00%	4.4	1.000 PLS lb
<b>Sedges &amp; Rushes</b>				
Plains Oval Sedge	<i>Carex brevior</i>	0.60%	0.6	0.060 PLS lb
Troublesome Sedge	<i>Carex molesta</i>	0.40%	0.4	0.040 PLS lb
Spreading Oval Sedge	<i>Carex normalis</i>	0.40%	0.4	0.040 PLS lb
Long-beaked Sedge	<i>Carex sprengelii</i>	0.60%	0.2	0.060 PLS lb
<b>Forbs</b>				
Anise Hyssop	<i>Agastache foeniculum</i>	0.40%	1.3	0.040 PLS lb
Wild Columbine	<i>Aquilegia canadensis</i>	0.40%	0.6	0.040 PLS lb
Common Milkweed	<i>Asclepias syriaca</i>	1.60%	0.2	0.160 PLS lb
False Boneset	<i>Brickellia eupatorioides</i>	0.40%	0.5	0.040 PLS lb
Prairie Coreopsis	<i>Coreopsis palmata</i>	0.40%	0.1	0.040 PLS lb
Tall Coreopsis	<i>Coreopsis tripteris</i>	0.80%	0.4	0.080 PLS lb
Purple Prairie Clover	<i>Dalea purpurea</i>	3.20%	2.1	0.320 PLS lb
Sweet Joe Pye Weed	<i>Eutrochium purpureum</i>	0.80%	1.2	0.080 PLS lb
Cream Gentian	<i>Gentiana flavida</i>	0.40%	2.1	0.040 PLS lb
Maximilian Sunflower	<i>Helianthus maximiliani</i>	1.60%	0.8	0.160 PLS lb
Ox-eye Sunflower	<i>Heliopsis helianthoides</i>	1.60%	0.4	0.160 PLS lb
Wild Bergamot	<i>Monarda fistulosa</i>	0.60%	1.5	0.060 PLS lb
Common Evening Primrose	<i>Oenothera biennis</i>	0.40%	1.3	0.040 PLS lb
Sweet Cicely	<i>Osmorhiza claytonii</i>	0.60%	0.1	0.060 PLS lb
Solomon's Seal	<i>Polygonatum biflorum</i>	0.40%	0.0	0.040 PLS lb
Prairie Wild Rose	<i>Rosa arkansana</i>	0.60%	0.1	0.060 PLS lb
Black-eyed Susan	<i>Rudbeckia hirta</i>	0.80%	2.7	0.080 PLS lb
Brown-eyed Susan	<i>Rudbeckia triloba</i>	0.80%	1.0	0.080 PLS lb
Late Figwort	<i>Scrophularia marilandica</i>	0.20%	1.2	0.020 PLS lb
Stiff Goldenrod	<i>Solidago rigida</i>	0.40%	0.6	0.040 PLS lb
Smooth Blue Aster	<i>Symphyotrichum laeve</i>	0.80%	1.6	0.080 PLS lb
Calico Aster	<i>Symphyotrichum lateriflorum</i>	0.20%	1.8	0.020 PLS lb
Early Meadow Rue	<i>Thalictrum dioicum</i>	0.40%	0.1	0.040 PLS lb
Ohio Spiderwort	<i>Tradescantia ohioensis</i>	0.40%	0.1	0.040 PLS lb
Culver's Root	<i>Veronicastrum virginicum</i>	0.20%	5.9	0.020 PLS lb
Golden Alexanders	<i>Zizia aurea</i>	1.60%	0.6	0.160 PLS lb



IDEAL2402  
Custom Diverse Pollinator Mix  
1 Acre

Large Seed: 7.73 Bulk lb  
Small Seed: 2.59 Bulk lb

Bulk lb/Acre  
10.32

10.32 Bulk lb  
8.50 PLS lb

Mix %	PLS lb	Bulk lb	Lot Number	Common Name	Scientific Name	Variety	Origin	Mix Purity	Species Purity	Germ	Hard or Dormant	TZ	Total Viable	PLS
15.29%	1.30	1.47	BOUCUR044E	Sideoats Grama	<i>Scirpus capillaris</i>	Not Stated	MN	13.70%	96.32%	42.00%	50.00%		92.00%	88.61%
3.06%	0.26	0.33	BOUGRA044B	Blue Grama	<i>Scirpus gracilis</i>	Not Stated	MN	2.60%	80.52%	67.00%	30.00%		97.00%	78.10%
6.24%	0.53	0.55	ELYCAN764A	Canada Wild Rye	<i>Elymus canadensis</i>	Not Stated	WI	5.89%	69.93%	36.00%	1.80%		97.00%	95.06%
12.35%	1.05	1.09	ELYTRA014D	Slender Wheatgrass	<i>Elymus trachycaulus</i>	Not Stated	MN	10.28%	97.19%	96.00%	3.00%		99.00%	96.22%
1.29%	0.11	0.24	IZENAC134A	June Grass	<i>Koeleria macrantha</i>	Not Stated	Canada	1.12%	95.77%	93.00%	2.00%		95.00%	90.98%
18.59%	1.58	2.86	5CHSCO044A	Little Bluestem	<i>Schizachyrium scoparium</i>	Not Stated	IA	15.47%	55.89%	31.00%	98.00%		99.00%	55.33%
4.94%	0.42	0.43	SPOCOM024A	Rough Dropseed	<i>Sporobolus compositus</i>	Not Stated	MN	4.15%	99.70%	11.00%	87.00%		98.00%	97.71%
0.59%	0.05	0.08	ACHMIL153A	Western Yarrow	<i>Achillea millefolium</i>	Not Stated	WA	0.49%	90.21%	98.00%	0.00%		99.00%	89.31%
0.82%	0.07	0.07	AMOCAN043A	Lead Plant	<i>Amorpha canescens</i>	Not Stated	MN	0.59%	99.42%	94.00%	4.00%		98.00%	97.43%
0.12%	0.01	0.01	ANECAN844A	Canada Anemone	<i>Anemone canadensis</i>	Not Stated	WI	0.10%	99.32%	1.00%	95.00%		98.00%	95.35%
0.12%	0.01	0.01	ASCSYR013A	Common Milkweed	<i>Asclepias syriaca</i>	Not Stated	MN	0.10%	99.95%	82.00%	17.00%		99.00%	98.95%
0.24%	0.02	0.02	ASCTUB004A	Butterfly Milkweed	<i>Asclepias tuberosa</i>	Not Stated	MI	0.23%	98.78%	55.00%	29.00%		84.00%	82.96%
1.06%	0.09	0.10	ABTCAN054A	Canada Milkvetch	<i>Astragalus canadensis</i>	Not Stated	MN	0.93%	98.13%			94.00%	94.00%	92.24%
2.59%	0.22	0.23	DALCAN053B	White Prairie Clover	<i>Dalea candida</i>	Not Stated	MN	2.15%	97.06%	95.00%	4.00%		99.00%	96.09%
6.59%	0.56	0.57	DALPUR044A	Purple Prairie Clover	<i>Dalea purpurea</i>	Not Stated	MN	5.48%	99.35%	17.00%	82.00%		99.00%	98.36%
4.71%	0.40	0.41	DESIIL2483A	Illinois Bundleflower	<i>Desmanthus illinoensis</i>	Not Stated	IA	4.00%	99.93%	57.00%	40.00%		97.00%	96.93%
0.82%	0.07	0.07	DESCAN013A	Showy Tick Trefoil	<i>Desmodium canadense</i>	Not Stated	MN	0.89%	99.91%	94.00%	4.00%		98.00%	97.91%
0.82%	0.07	0.08	DRYAR0024A	Prairie Cinquefoil	<i>Dryocallis arguta</i>	Not Stated	MN	0.78%	97.08%	33.00%	54.00%		87.00%	84.46%
1.53%	0.13	0.14	ECHPAL463A	Pale Purple Coneflower	<i>Echinacea pallida</i>	Not Stated	IA	1.31%	99.73%	96.00%	0.00%		98.00%	95.74%
4.24%	0.36	0.41	ECHPUR154B	Purple Coneflower	<i>Echinacea purpurea</i>	Not Stated	Midwest	3.88%	97.55%	43.00%	47.00%		99.00%	87.80%
0.24%	0.02	0.02	ERYUUC194A	Rattlesnake Master	<i>Eryngium yuccifolium</i>	Not Stated	IA	0.20%	99.83%	89.00%	10.00%		99.00%	96.83%
1.53%	0.13	0.15	HELHEL464B	Ox-eye Sunflower	<i>Helopsis helianthoides</i>	Not Stated	IA	1.45%	99.98%	71.00%	16.00%		87.00%	96.98%
0.24%	0.02	0.02	LESCAP013A	Round-headed Bush Clover	<i>Lespedeza capitata</i>	Not Stated	MN	0.20%	99.94%	47.00%	52.00%		98.00%	98.94%
0.24%	0.02	0.02	LIAPYC764A	Prairie Blazing Star	<i>Liatris pycnostachya</i>	Not Stated	WI	0.20%	92.01%			98.00%	98.00%	90.17%
1.53%	0.13	0.13	MONFIS464A	Wild Bergamot	<i>Monarda fistulosa</i>	Not Stated	IA	1.30%	99.63%	86.00%	31.00%		97.00%	96.84%
0.24%	0.02	0.02	OENBIE023A	Common Evening Primrose	<i>Oenothera biennis</i>	Not Stated	MN	0.20%	99.92%	27.00%	71.00%		98.00%	97.92%
0.59%	0.05	0.05	PENDIG024A	Foxglove Beardtongue	<i>Penstemon digitalis</i>	Not Stated	WI	0.49%	93.48%	6.00%	92.00%		98.00%	91.61%
0.24%	0.02	0.03	PYCTEN824A	Slender Mountain Mint	<i>Pycnanthemum tenuifolium</i>	Not Stated	IA	0.21%	95.89%	78.00%	15.00%		93.00%	91.28%
0.24%	0.02	0.02	PYCVIR464B	Virginia Mountain Mint	<i>Pycnanthemum virginianum</i>	Not Stated	IA	0.20%	99.52%	72.00%	26.00%		98.00%	97.53%
1.76%	0.15	0.15	RATPIN462A	Yellow Coneflower	<i>Ratibida pinnata</i>	Not Stated	IA	1.48%	98.94%	98.00%	0.00%		98.00%	96.96%
1.88%	0.16	0.16	RUDHIR463B	Black-eyed Susan	<i>Rudbeckia hirta</i>	Not Stated	IA	1.57%	99.93%	99.00%	0.00%		99.00%	98.93%
1.06%	0.09	0.09	RUDTR464A	Brown-eyed Susan	<i>Rudbeckia triloba</i>	Not Stated	IA	0.89%	99.74%	98.00%	0.00%		98.00%	97.75%
0.24%	0.02	0.02	SOLNEM464A	Gray Goldenrod	<i>Solidago nemoralis</i>	Not Stated	IA	0.20%	97.23%	97.00%	2.00%		99.00%	96.26%
0.24%	0.02	0.02	SOLRIG154A	Stiff Goldenrod	<i>Solidago rigida</i>	Not Stated	IA	0.20%	99.70%	24.00%	75.00%		99.00%	98.70%
0.59%	0.05	0.05	SOLSPE464A	Showy Goldenrod	<i>Solidago speciosa</i>	Not Stated	IA	0.50%	98.08%	41.00%	55.00%		96.00%	92.24%
0.12%	0.01	0.01	SYMLAE463D	Smooth Blue Aster	<i>Symphyotrichum laeve</i>	Not Stated	IA	0.10%	98.60%	96.00%	0.00%		96.00%	94.66%
0.12%	0.01	0.01	ASTAZU462B	Sky Blue Aster	<i>Symphyotrichum oolentangiae</i>	Not Stated	IA	0.12%	98.96%	41.00%	43.00%		84.00%	83.13%
0.35%	0.03	0.03	TRAQHI704C	Ohio Spiderwort	<i>Tradescantia ohioensis</i>	Not Stated	WI	0.32%	99.96%	0.00%	90.00%		90.00%	89.96%
1.85%	0.14	0.15	VERSTR413A	Hoary Vervain	<i>Verbena stricta</i>	Not Stated	MN	1.44%	98.92%	4.00%	90.00%		94.00%	92.98%
0.84%	0.08	0.10	ZIZAUJ463A	Golden Alexanders	<i>Zizia aurea</i>	Not Stated	IA	0.96%	99.28%	11.00%	70.00%		81.00%	80.42%
100.00%	8.50	10.32												

Purity 85.68%, Inert Matter 14.08%, Other Crop 0.24%, Weed Seed 0%  
Noxious Weed Seeds/lb: None  
Test Date: 02/2024

AMS 6818

Example of expected  
pollinator mix for 5.1 acre