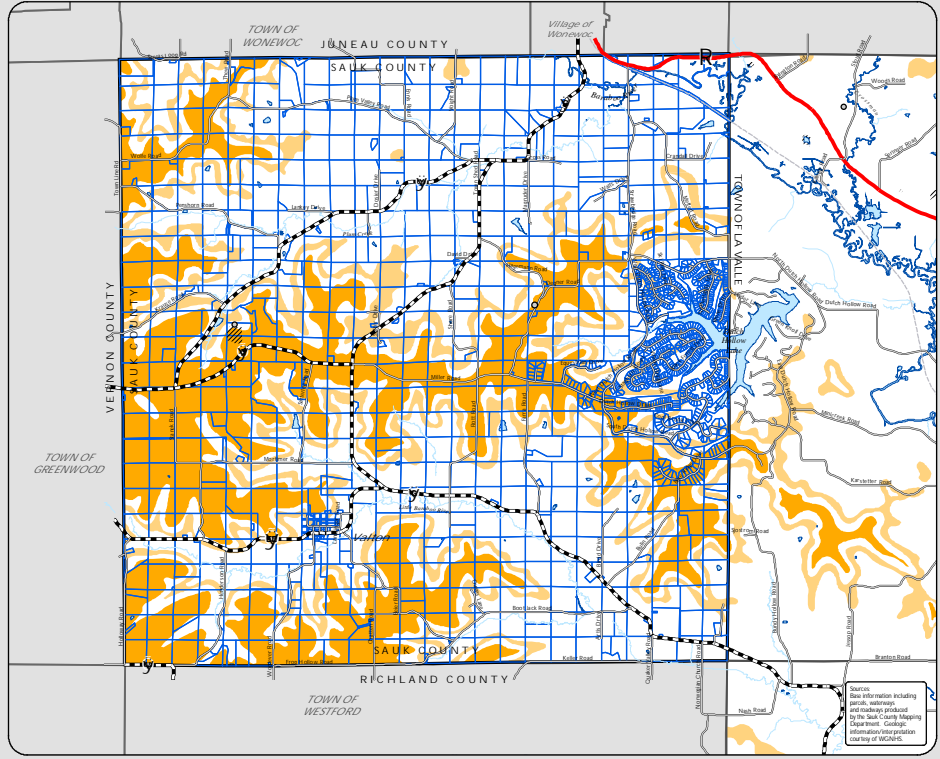


Potential Mineral Deposits

Legend

- Potential Deposits
 - Rock/Stone - Good
 - Rock/Stone - Moderate
- Mineral Extraction Operations
 - Inactive
 - Active
- Boundaries
 - Parcel Boundary
 - Town of Woodland
 - Town Boundary
 - County Boundary
 - River/Stream
- Transportation
 - State Highway
 - County Highway
 - Town Road
 - Municipal Street
 - "400" State Trail



Source:
Base information including
roads, waterways
and roadways produced
by the Sank County Mapping
Department. Geologic
information and mineral potential
courtesy of MGN&S.

