

## Land Capability Classification

### Legend

#### Land Capability

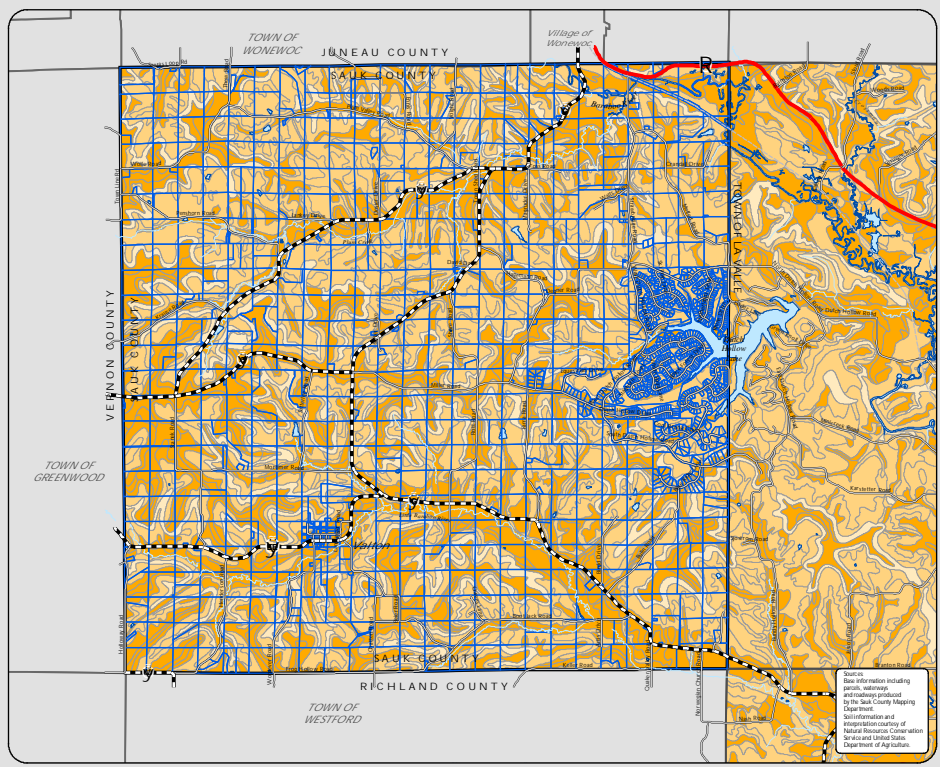
- Class I, II, III
- Class IV, V, VI
- Class VII, VIII

#### Boundaries

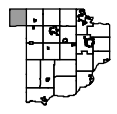
- Parcel Boundary
- Town of Woodland
- Town Boundary
- County Boundary
- River/Stream

#### Transportation

- State Highway
- County Highway
- Town Road
- Municipal Street
- "400" State Trail



Source:  
Base information including  
parcels, railroads  
and roadways produced  
by the Salk County Mapping  
Department.  
Soil information and  
interpretation courtesy of  
Natural Resources Corner station  
for various United States  
Department of Agriculture.



Miles  
0 0.4 0.8