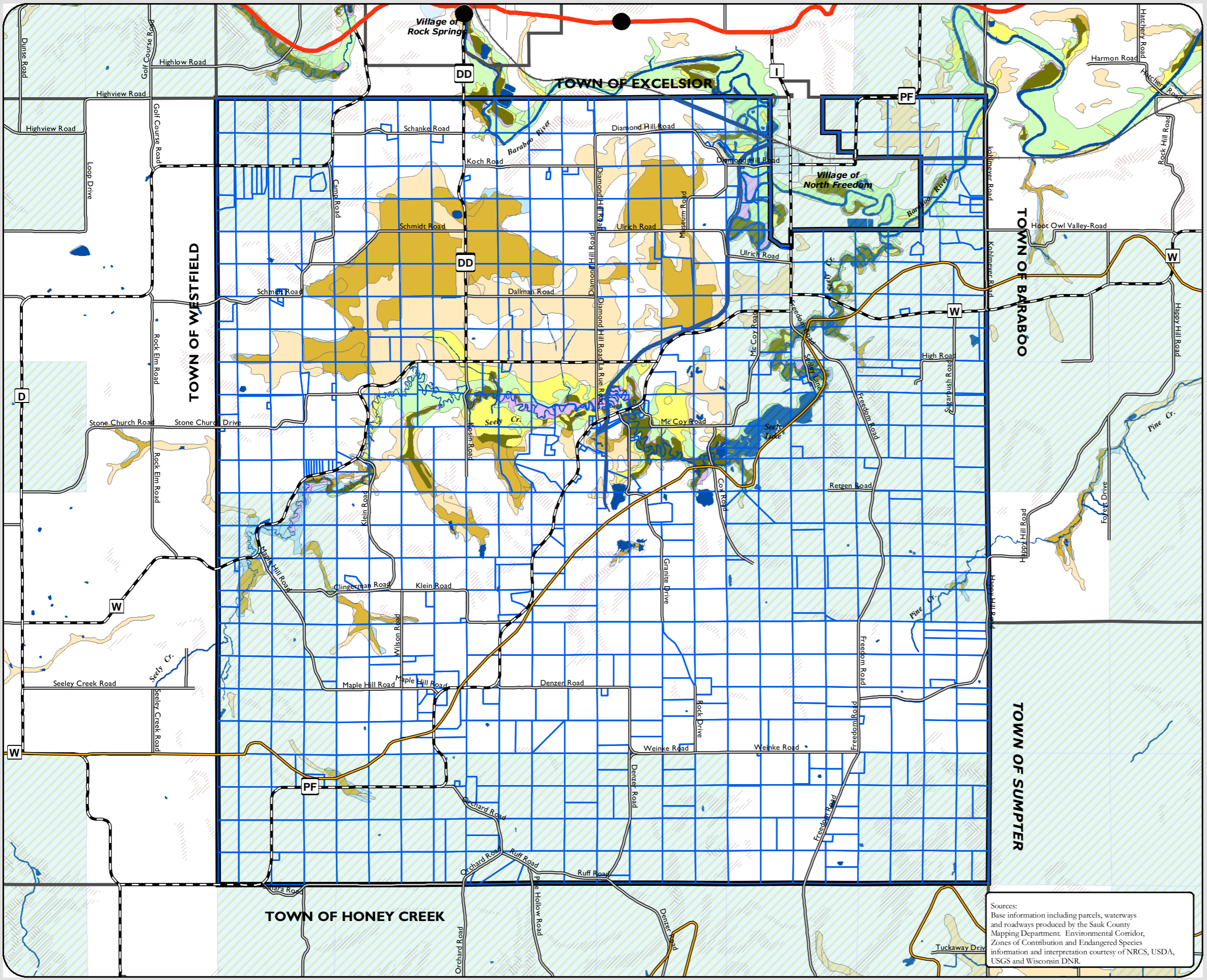


Environmentally Sensitive Areas

Legend

- Sensitive Areas**
- Surface Water
 - Wetlands Only
 - Floodplains Only
 - Hydric Soils Only
 - Floodplains & Hydric Soils
 - Wetlands & Floodplains
 - Wetlands & Hydric Soils
 - Wetlands & Hydric Soils & Floodplains
 - Areas that may contain Endangered Species or Systems
 - Baraboo Range National Natural Landmark
- Slope**
- > 12%
 - > 20%
- Boundaries**
- Town of Freedom
 - Town Boundary
 - Parcel
- Transportation**
- State Highway
 - County Highway
 - Town Roads
 - Municipal Streets
 - Railroad
- Zones of Contribution**
- 5 Year
 - 50 Year
 - 100 Year



Sources:
Base information including parcels, waterways and roadways produced by the Sauk County Mapping Department. Environmental Corridor, Zones of Contribution and Endangered Species information and interpretation courtesy of NRCS, USDA, USGS and Wisconsin DNR.

